

## Human Albumin ELISA Kit ab108788

★★★★★ [1 Abreviews](#) [51 References](#) [画像数 3](#)

### 製品の概要

**製品名** Human Albumin ELISA Kit

**検出方法** Colorimetric

**再現性** Intra-Assay (同時再現性)

サンプル	N	平均値	SD	CV%
Overall				5.9%

Inter-Assay (日差再現性)

サンプル	N	平均値	SD	CV%
Overall				10.4%

**サンプルの種類** Cell culture supernatant, Saliva, Milk, Urine, Tissue, Cell Lysate, Cerebral Spinal Fluid

**アッセイタイプ** Sandwich (quantitative)

**検出感度** = 0.79 ng/ml

**検出範囲** 3.125 ng/ml - 200 ng/ml

**添加回収試験** 99 %

**全工程の試験時間** 3h 00m

**ステップ** Multiple steps standard assay

**種交差性** 交差種: Human

**製品の概要** Human Albumin ELISA kit (ab108788) is a sandwich ELISA kit designed for the quantitative measurement of albumin levels in urine, saliva, milk, CSF, cell culture supernatants, cell lysate and tissue samples.

An albumin specific antibody has been precoated onto 96-well plates and blocked. Standards or test samples are added to the wells and subsequently an albumin specific biotinylated detection antibody is added and then followed by washing with wash buffer. Avidin-Biotin-Peroxidase Complex is added and unbound conjugates are washed away with wash buffer. TMB is then used to visualize HRP enzymatic reaction. TMB is catalyzed by HRP to produce a blue color product that changes into yellow after adding acidic stop solution. The density of yellow coloration is directly proportional to the amount of albumin captured in plate.

Get results in 90 minutes with Human Albumin ELISA Kit ([ab179887](#)) from our SimpleStep ELISA® range.

**Please note:** For both the 10X Diluent N Concentrate and 20X Wash Buffer Concentrate, please ensure to mix well by inversion before use to avoid precipitation.

The concentration of the biotinylated antibody varies by lot: 30X, 40X, 50X, etc. The stock Biotinylated Albumin Antibody must be diluted with 1X Diluent N to prepare 1X Biotinylated Albumin Antibody for use in the assay procedure. Observe the label for the “X” concentration on the vial of Biotinylated Albumin Antibody.

**The entire kit may be stored at -20°C for long term storage before reconstitution - Avoid repeated freeze-thaw cycles.**

#### 試験プラットフォーム

Microplate

#### 製品の特性

##### 保存方法

Store at -20°C. Please refer to protocols.

内容	1 x 96 tests
100X Streptavidin-Peroxidase Conjugate	1 x 80µl
10X Diluent N Concentrate	1 x 30ml
20X Wash Buffer Concentrate	2 x 30ml
25X Biotinylated Human Albumin Antibody	1 x 150µl
Albumin Microplate (12 x 8 well strips)	1 unit
Albumin Standard	1 vial
Chromogen Substrate	1 x 7ml
Sealing Tapes	3 units
Stop Solution	1 x 11ml

##### 機能

Serum albumin, the main protein of plasma, has a good binding capacity for water, Ca(2+), Na(+), K(+), fatty acids, hormones, bilirubin and drugs. Its main function is the regulation of the colloidal osmotic pressure of blood. Major zinc transporter in plasma, typically binds about 80% of all plasma zinc.

##### 組織特異性

Plasma.

##### 関連疾患

Defects in ALB are a cause of familial dysalbuminemic hyperthyroxinemia (FDH) [MIM:103600]. FDH is a form of euthyroid hyperthyroxinemia that is due to increased affinity of ALB for T(4). It is the most common cause of inherited euthyroid hyperthyroxinemia in Caucasian population.

##### 配列類似性

Belongs to the ALB/AFP/VDB family.

Contains 3 albumin domains.

### 翻訳後修飾

Kenitra variant is partially O-glycosylated at Thr-620. It has two new disulfide bonds Cys-600 to Cys-602 and Cys-601 to Cys-606.

Glycated in diabetic patients.

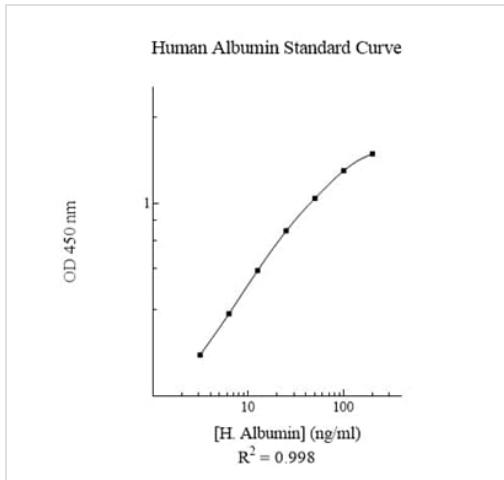
Phosphorylation sites are present in the extracellular medium.

Acetylated on Lys-223 by acetylsalicylic acid.

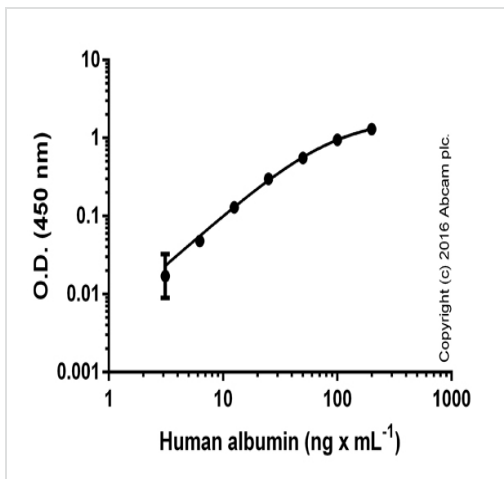
### 細胞内局在

Secreted.

### 画像

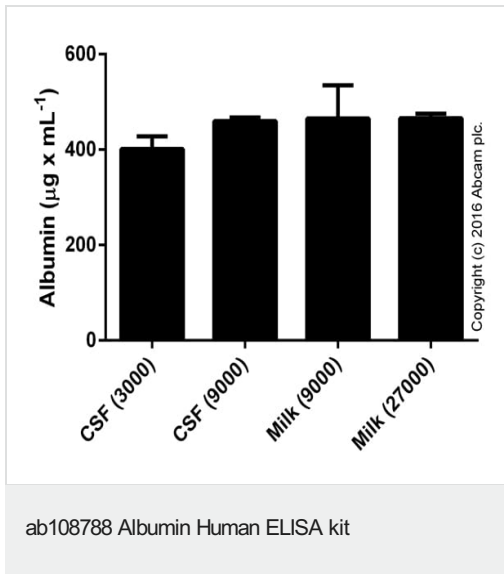


Typical Standard Curve for ab108788 Human Albumin ELISA kit



Standard curve with background signal subtracted (duplicates; +/- SD).

ab108788 Albumin Human ELISA kit



Concentration of albumin from differently diluted (in parenthesis) samples, demonstrating a linearity of 84-90% in CSF and 88-111% in milk (duplicates; +/- SD).

**Please note:** All products are "FOR RESEARCH USE ONLY. NOT FOR USE IN DIAGNOSTIC PROCEDURES"

### Our Abpromise to you: Quality guaranteed and expert technical support

- Replacement or refund for products not performing as stated on the datasheet
- Valid for 12 months from date of delivery
- Response to your inquiry within 24 hours
- We provide support in Chinese, English, French, German, Japanese and Spanish
- Extensive multi-media technical resources to help you
- We investigate all quality concerns to ensure our products perform to the highest standards

If the product does not perform as described on this datasheet, we will offer a refund or replacement. For full details of the Abpromise, please visit <https://www.abcam.co.jp/abpromise> or contact our technical team.

### Terms and conditions

- Guarantee only valid for products bought direct from Abcam or one of our authorized distributors