

BrdU Cell Proliferation ELISA Kit (colorimetric) ab126556

★★★★★ [2 Abreviews](#) [160 References](#) [画像数 7](#)

医薬用外劇物

製品の概要

製品名	BrdU Cell Proliferation ELISA Kit (colorimetric)
検出方法	Colorimetric
サンプルの種類	Adherent cells, Suspension cells
アッセイタイプ	Sandwich (qualitative)
検出感度	< 40 cells/well
全工程の試験時間	2h 30m
ステップ	Multiple steps standard assay
製品の概要	<p>BrdU Cell proliferation ELISA kit (ab126556) is an indirect ELISA kit for the detection of BrdU incorporation into newly synthesized DNA of actively proliferating cells. It involves incorporation of BrdU into cells cultured in microtiter plates using the cell layer as the solid phase. During the final 2 to 24 hours of culture BrdU is added to wells of the microtiter plate. BrdU will be incorporated into the DNA of dividing cells. To enable antibody binding to the incorporated BrdU cells must be fixed, permeabilized and the DNA denatured. This is all done in one step by treatment with Fixing Solution. Detector anti-BrdU monoclonal antibody is pipetted into the wells and allowed to incubate for one hour, during which time it binds to any incorporated BrdU. Unbound antibody is washed away and horseradish peroxidase-conjugated goat anti-mouse antibody is added, which binds to the Detector Antibody.</p>

The horseradish peroxidase catalyzes the conversion of the chromogenic substrate tetra-methylbenzidine (TMB) from a colorless solution to a blue solution (or yellow after the addition of stopping reagent), the intensity of which is proportional to the amount of incorporated BrdU in the cells. The colored reaction product is quantified using a spectrophotometer.

The resultant assay is sensitive, rapid, easy to perform and applicable to high sample throughput. In addition to evaluation of cell proliferation, information such as cell number, morphology and analysis of cellular antigens can be obtained from a single culture.

Store kit at +4°C immediately upon receipt except for the Prediluted Anti-BrdU Detector Antibody and Peroxidase Goat anti-mouse IgG (2000X) which must be stored at -20°C.

特記事項

Abcam has not and does not intend to apply for the REACH Authorisation of customers' uses of products that contain European Authorisation list (Annex XIV) substances.

It is the responsibility of our customers to check the necessity of application of REACH Authorisation, and any other relevant authorisations, for their intended uses.

試験プラットフォーム

Microplate

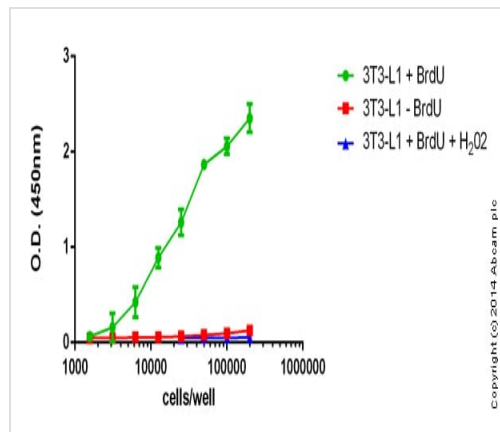
製品の特性

保存方法

Store at +4°C. Please refer to protocols.

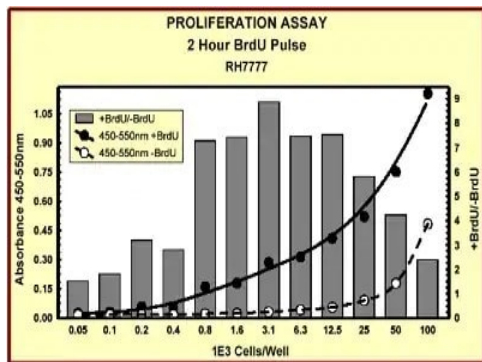
内容	200 tests
500X BrdU Reagent	1 x 15µl
Conjugate Diluent	1 x 25ml
Fixing Solution	2 x 20ml
Peroxidase Goat anti-mouse IgG (2000X)	1 x 15µl
Plate wash concentrate (50X)	1 x 90ml
Prediluted anti-BrdU detecting antibody	1 x 20ml
Stop Solution	1 x 25ml
TMB Substrate	1 x 25ml

画像



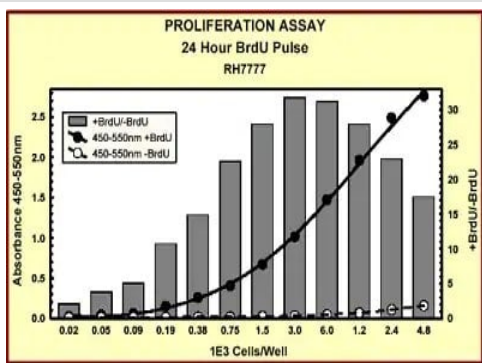
Cell proliferation measured in fibroblasts showing cell amounts vs. optical densities

Indirect ELISA - ab126556 BrdU Cell Proliferation
ELISA Kit (colorimetric)



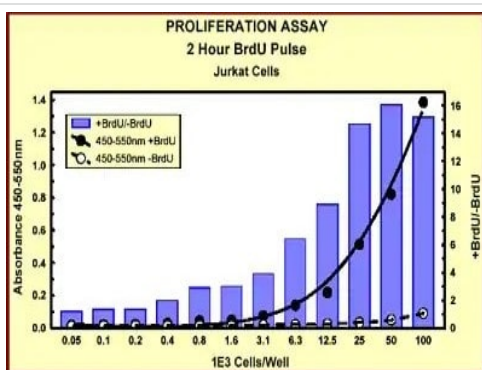
Detection of RH7777 (adherent) cells per well with 2 hour pulse with BrdU. Y axis - left, OD 450-550 nm. Y axis-right, signal-to-noise ratio.

Indirect ELISA - BrdU Cell Proliferation ELISA Kit
(colorimetric) (ab126556)



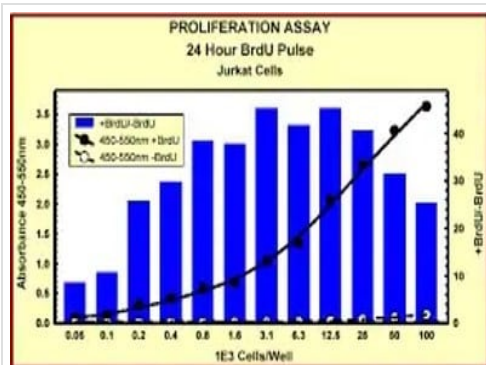
Detection of RH7777 (adherent) cells per well with 24 hour pulse with BrdU. Y axis - left, OD 450-550 nm. Y axis-right, signal-to-noise ratio.

Indirect ELISA - BrdU Cell Proliferation ELISA Kit
(colorimetric) (ab126556)



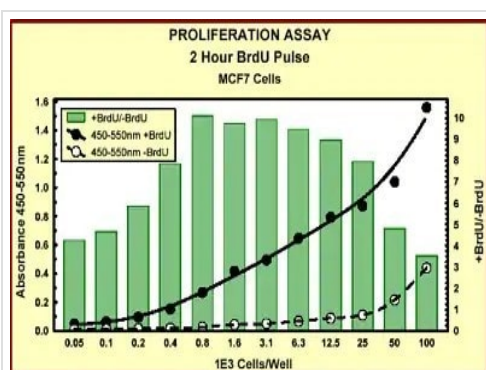
Detection of Jurkat cells (non-adherent) per well with 2 hour pulse with BrdU. Y axis - left, OD 450-550 nm. Y axis-right, signal-to-noise ratio.

Indirect ELISA - BrdU Cell Proliferation ELISA Kit
(colorimetric) (ab126556)



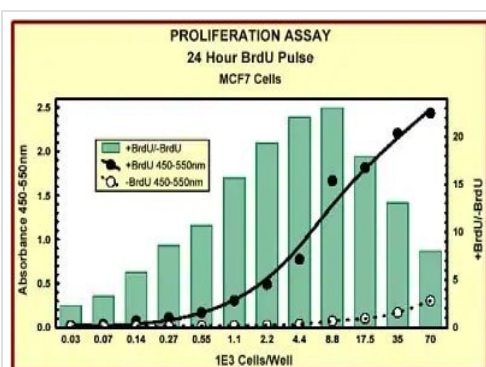
Indirect ELISA - BrdU Cell Proliferation ELISA Kit
(colorimetric) (ab126556)

Detection of Jurkat cells (non-adherent) per well with 24 hour pulse with BrdU. Y axis - left, OD 450-550 nm. Y axis-right, signal-to-noise ratio.



Indirect ELISA - BrdU Cell Proliferation ELISA Kit
(colorimetric) (ab126556)

Detection of MCF7 cells per well with 2 hour pulse with BrdU. Y axis - left, OD 450-550 nm. Y axis-right, signal-to-noise ratio.



Indirect ELISA - BrdU Cell Proliferation ELISA Kit
(colorimetric) (ab126556)

Detection of MCF7 cells per well with 24 hour pulse with BrdU. Y axis - left, OD 450-550 nm. Y axis-right, signal-to-noise ratio.

Please note: All products are "FOR RESEARCH USE ONLY. NOT FOR USE IN DIAGNOSTIC PROCEDURES"

Our Promise to you: Quality guaranteed and expert technical support

- Replacement or refund for products not performing as stated on the datasheet

- Valid for 12 months from date of delivery
- Response to your inquiry within 24 hours
- We provide support in Chinese, English, French, German, Japanese and Spanish
- Extensive multi-media technical resources to help you
- We investigate all quality concerns to ensure our products perform to the highest standards

If the product does not perform as described on this datasheet, we will offer a refund or replacement. For full details of the Abpromise, please visit <https://www.abcam.co.jp/abpromise> or contact our technical team.

Terms and conditions

- Guarantee only valid for products bought direct from Abcam or one of our authorized distributors