

Wee1 overexpression 293T lysate (whole cell) ab94212

画像数 2

医薬用外劇物

製品の概要

製品名	Wee1 overexpression 293T lysate (whole cell)
特記事項	ab94212 is a 293T cell transfected lysate in which Human Wee1 has been transiently over-expressed using a pCMV-Wee1 plasmid. The lysate is provided in 1X Sample Buffer.
アプリケーション	適用あり: WB

製品の特性

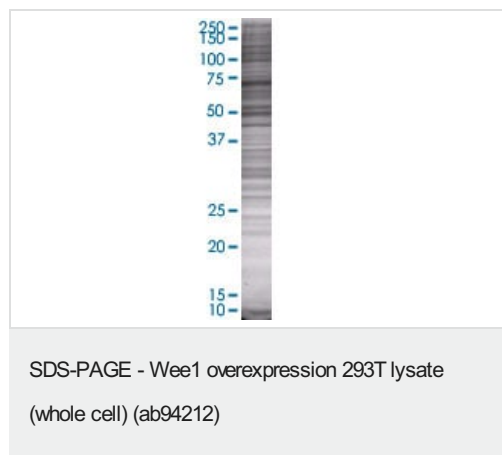
Mycoplasma free	Yes
製品の状態	Liquid
保存方法	Shipped on dry ice. Upon delivery aliquot and store at -20°C. Avoid freeze / thaw cycles.
バッファー	Constituents: 0.01% Bromophenol blue, 2.3% Beta mercaptoethanol, 2% Sodium lauryl sulfate, 0.788% Tris HCl, 10% Glycerol (glycerin, glycerine)
背景	Function: Acts as a negative regulator of entry into mitosis (G2 to M transition) by protecting the nucleus from cytoplasmically activated cyclin B1-complexed CDK1 before the onset of mitosis by mediating phosphorylation of CDK1 on 'Tyr-15'. Specifically phosphorylates and inactivates cyclin B1-complexed CDK1 reaching a maximum during G2 phase and a minimum as cells enter M phase. Phosphorylation of cyclin B1-CDK1 occurs exclusively on 'Tyr-15' and phosphorylation of monomeric CDK1 does not occur. Its activity increases during S and G2 phases and decreases at M phase when it is hyperphosphorylated. A correlated decrease in protein level occurs at M/G1 phase, probably due to its degradation. Similarity: Belongs to the protein kinase superfamily. Ser/Thr protein kinase family. WEE1 subfamily. Contains 1 protein kinase domain. PTM: Phosphorylated during M and G1 phases. Also autophosphorylated. Ubiquitinated and degraded at the onset of G2/M phase.

アプリケーション

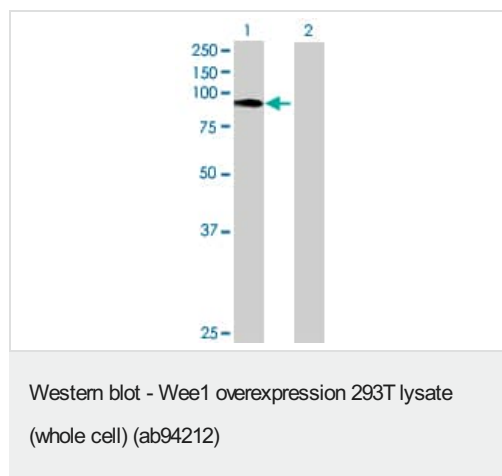
The Abpromise guarantee **Abpromise保証は、** 次のテスト済みアプリケーションにおけるab94212の使用に適用されます
アプリケーションノートには、推奨の開始希釈率がありますが、適切な希釈率につきましてはご検討ください。

アプリケーション	Abreviews	特記事項
WB		Use at an assay dependent dilution.

画像



ab94212 at 15µg/lane on an SDS-PAGE gel



All lanes : Anti-Wee1 antibody ([ab58059](#)) at 1/500 dilution

Lane 1 : Wee1 overexpression 293T lysate (whole cell) (ab94212)

Lane 2 : 293T Non Transfected Lysate

Lysates/proteins at 25 µg per lane.

Secondary

All lanes : Goat Anti-mouse IgG (H and L) HRP conjugated at 1/2500 dilution

Please note: All products are "FOR RESEARCH USE ONLY. NOT FOR USE IN DIAGNOSTIC PROCEDURES"

Our Abpromise to you: Quality guaranteed and expert technical support

- Replacement or refund for products not performing as stated on the datasheet
- Valid for 12 months from date of delivery
- Response to your inquiry within 24 hours
- We provide support in Chinese, English, French, German, Japanese and Spanish
- Extensive multi-media technical resources to help you
- We investigate all quality concerns to ensure our products perform to the highest standards

If the product does not perform as described on this datasheet, we will offer a refund or replacement. For full details of the Abpromise, please visit <https://www.abcam.co.jp/abpromise> or contact our technical team.

Terms and conditions

- Guarantee only valid for products bought direct from Abcam or one of our authorized distributors