

Synphilin 1 overexpression 293T lysate (whole cell) ab94102

画像数 2

医薬用外劇物

製品の概要

製品名	Synphilin 1 overexpression 293T lysate (whole cell)
特記事項	ab94102 is a 293T cell transfected lysate in which Human Synphilin 1 has been transiently over-expressed using a pCMV-Synphilin 1 plasmid. The lysate is provided in 1X Sample Buffer.
アプリケーション	適用あり: WB

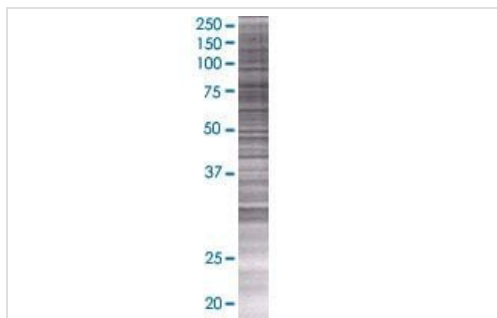
製品の特性

Mycoplasma free	Yes
製品の状態	Liquid
保存方法	Shipped on dry ice. Upon delivery aliquot and store at -20°C. Avoid freeze / thaw cycles.
バッファー	Constituents: 0.01% Bromophenol blue, 2.3% Beta mercaptoethanol, 2% Sodium lauryl sulfate, 0.788% Tris HCl, 10% Glycerol (glycerin, glycerine)
背景	Disease: Parkinson disease Function: Isoform 2 inhibits the ubiquitin ligase activity of SIAH1 and inhibits proteasomal degradation of target proteins. Isoform 2 inhibits autoubiquitination and proteasomal degradation of SIAH1, and thereby increases cellular levels of SIAH. Isoform 2 modulates SNCA monoubiquitination by SIAH1. PTM: Ubiquitinated; mediated by SIAH1, SIAH2 or RNF19A and leading to its subsequent proteasomal degradation. In the absence of proteasomal degradation, ubiquitinated SNCAIP accumulates in cytoplasmic inclusion bodies. Isoform 2 is subject to limited ubiquitination that does not lead to proteasomal degradation. Similarity: Contains 6 ANK repeats. Tissue specificity: Detected in brain (at protein level). Widely expressed, with highest levels in brain, heart and placenta.

アプリケーション

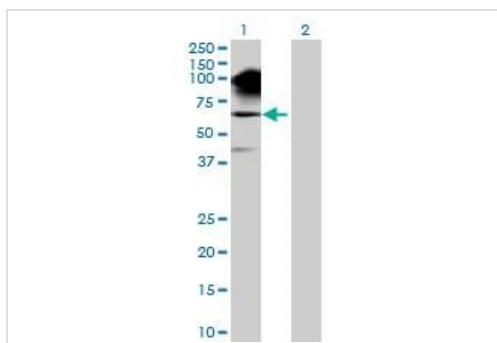
The Abpromise guarantee Abpromise保証は、次のテスト済みアプリケーションにおけるab94102の使用に適用されます
 アプリケーションノートには、推奨の開始希釈率がありますが、適切な希釈率につきましてはご検討ください。

アプリケーション	Abreviews	特記事項
WB		Use at an assay dependent dilution.



SDS-PAGE - Synphilin 1 overexpression 293T lysate (whole cell) (ab94102)

ab94102 at 15µg/lane on an SDS-PAGE gel.



Western blot - Synphilin 1 overexpression 293T lysate (whole cell) (ab94102)

All lanes : Anti-Synphilin 1 antibody ([ab56627](#)) at 1/500 dilution

Lane 1 : Synphilin 1 overexpression 293T lysate (whole cell) (ab94102)

Lane 2 : 293T Non Transfected Lysate

Lysates/proteins at 25 µg per lane.

Secondary

All lanes : Goat Anti-mouse IgG (H and L) HRP conjugated at 1/2500 dilution

Please note: All products are "FOR RESEARCH USE ONLY. NOT FOR USE IN DIAGNOSTIC PROCEDURES"

Our Abpromise to you: Quality guaranteed and expert technical support

- Replacement or refund for products not performing as stated on the datasheet
- Valid for 12 months from date of delivery
- Response to your inquiry within 24 hours
- We provide support in Chinese, English, French, German, Japanese and Spanish
- Extensive multi-media technical resources to help you
- We investigate all quality concerns to ensure our products perform to the highest standards

If the product does not perform as described on this datasheet, we will offer a refund or replacement. For full details of the Abpromise, please visit <https://www.abcam.co.jp/abpromise> or contact our technical team.

Terms and conditions

- Guarantee only valid for products bought direct from Abcam or one of our authorized distributors