

### SMC3 overexpression 293T lysate (whole cell) ab94138

画像数 2

医薬用外劇物

#### 製品の概要

製品名	SMC3 overexpression 293T lysate (whole cell)
特記事項	ab94138 is a 293T cell transfected lysate in which Human SMC3 has been transiently over-expressed using a pCMV-SMC3 plasmid. The lysate is provided in 1X Sample Buffer.
アプリケーション	適用あり: WB

#### 製品の特性

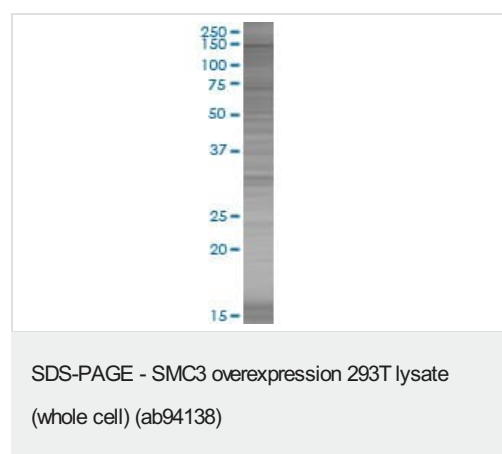
Mycoplasma free	Yes
製品の状態	Liquid
保存方法	Shipped on dry ice. Upon delivery aliquot and store at -20°C. Avoid freeze / thaw cycles.
バッファー	Constituents: 0.01% Bromophenol blue, 2.3% Beta mercaptoethanol, 2% Sodium lauryl sulfate, 0.788% Tris HCl, 10% Glycerol (glycerin, glycerine)
背景	<p>Disease: Defects in SMC3 are the cause of Cornelia de Lange syndrome type 3 (CDLS3) [MIM:610759]. CDLS is a dominantly inherited multisystem developmental disorder characterized by growth and cognitive retardation, abnormalities of the upper limbs, gastroesophageal dysfunction, cardiac, ophthalmologic and genitourinary anomalies, hirsutism, and characteristic facial features. CDSL3 is a mild form with absence of major structural anomalies typically associated with CDLS. The phenotype in some instances approaches that of apparently non-syndromic mental retardation. Domain: The flexible hinge domain, which separates the large intramolecular coiled coil regions, allows the heterotypic interaction with the corresponding domain of SMC1A or SMC1B, forming a V-shaped heterodimer. The two heads of the heterodimer are then connected by different ends of the cleavable RAD21 protein, forming a ring structure. Function: Central component of cohesin, a complex required for chromosome cohesion during the cell cycle. The cohesin complex may form a large proteinaceous ring within which sister chromatids can be trapped. At anaphase, the complex is cleaved and dissociates from chromatin, allowing sister chromatids to segregate. Cohesion is coupled to DNA replication and is involved in DNA repair. The cohesin complex plays also an important role in spindle pole assembly during mitosis and in chromosomes movement. PTM: Phosphorylated upon DNA damage, probably by ATM or ATR. Acetylation at Lys-105 and Lys-106 by ESCO1 is important for genome stability and S phase sister chromatid cohesion. Regulated by DSCC1, it is required for processive DNA synthesis, coupling sister chromatid cohesion establishment during S phase to DNA replication. Similarity: Belongs to the SMC family. SMC3 subfamily.</p>

## アプリケーション

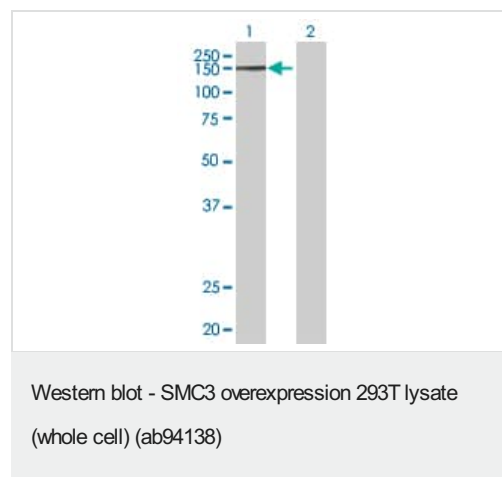
**The Abpromise guarantee** Abpromise保証は、 次のテスト済みアプリケーションにおけるab94138の使用に適用されます  
アプリケーションノートには、推奨の開始希釈率がありますが、適切な希釈率につきましてはご確認ください。

アプリケーション	Abreviews	特記事項
WB		Use at an assay dependent dilution.

## 画像



ab94138 at 15µg/lane on an SDS-PAGE gel.



**All lanes :** Anti-SMC3 antibody (**ab89618**) at 1/500 dilution

**Lane 1 :** SMC3 overexpression 293T lysate (whole cell) (ab94138)

**Lane 2 :** 293T non-transfected lysate

Lysates/proteins at 25 µg per lane.

### Secondary

**All lanes :** Goat Anti-mouse IgG (H and L) HRP conjugated at  
1/2500 dilution

**Please note:** All products are "FOR RESEARCH USE ONLY. NOT FOR USE IN DIAGNOSTIC PROCEDURES"

## Our Abpromise to you: Quality guaranteed and expert technical support

- Replacement or refund for products not performing as stated on the datasheet
- Valid for 12 months from date of delivery
- Response to your inquiry within 24 hours
- We provide support in Chinese, English, French, German, Japanese and Spanish

- Extensive multi-media technical resources to help you
- We investigate all quality concerns to ensure our products perform to the highest standards

If the product does not perform as described on this datasheet, we will offer a refund or replacement. For full details of the Abpromise, please visit <https://www.abcam.co.jp/abpromise> or contact our technical team.

#### **Terms and conditions**

---

- Guarantee only valid for products bought direct from Abcam or one of our authorized distributors