

Sla overexpression 293T lysate (whole cell) ab94185

画像数 2

医薬用外劇物

製品の概要

製品名	Sla overexpression 293T lysate (whole cell)
特記事項	ab94185 is a 293T cell transfected lysate in which Human Sla has been transiently over-expressed using a pCMV-Slap plasmid. The lysate is provided in 1X Sample Buffer. Protein formally labeled as Slap.
アプリケーション	適用あり: WB

製品の特性

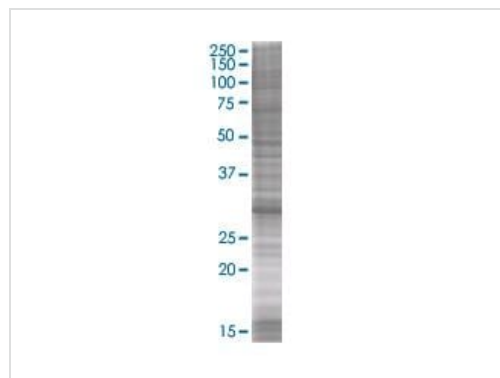
Mycoplasma free	Yes
製品の状態	Liquid
保存方法	Shipped on dry ice. Upon delivery aliquot and store at -20°C. Avoid freeze / thaw cycles.
バッファー	Constituents: 0.01% Bromophenol blue, 2.3% Beta mercaptoethanol, 2% Sodium lauryl sulfate, 0.788% Tris HCl, 10% Glycerol (glycerin, glycerine)
背景	Function: Adapter protein, which negatively regulates T-cell receptor (TCR) signaling. Inhibits T-cell antigen-receptor induced activation of nuclear factor of activated T-cells. Involved in the negative regulation of positive selection and mitosis of T-cells. May act by linking signaling proteins such as ZAP70 with CBL, leading to a CBL dependent degradation of signaling proteins. Tissue specificity: Expressed in lung and fetal brain. Weakly expressed in heart, adult brain, placenta, liver, skeletal muscle, kidney and pancreas. Similarity: Contains 1 SH2 domain. Contains 1 SH3 domain. Domain: The C-terminal domain is essential for the homodimerization and the interaction with CBL. While the interaction with CBL is apparently mediated via the hydrophobic region of this domain, the highly charged region is apparently required for the homodimerization.

アプリケーション

The Abpromise guarantee **Abpromise保証は、次のテスト済みアプリケーションにおけるab94185の使用に適用されず**
アプリケーションノートには、推奨の開始希釈率がありますが、適切な希釈率につきましてはご検討ください。

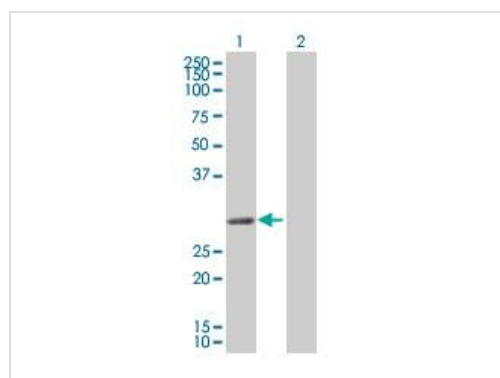
アプリケーション	Abreviews	特記事項
WB		Use at an assay dependent dilution.

画像



SDS-PAGE - Sla overexpression 293T lysate (whole cell) (ab94185)

ab94185 at 15 µg/lane on an SDS-PAGE gel



Western blot - Sla overexpression 293T lysate (whole cell) (ab94185)

All lanes : Anti-Sla antibody ([ab58290](#)) at 1/500 dilution

Lane 1 : Sla overexpression 293T lysate (whole cell) (ab94185)

Lane 2 : 293T non-transfected Lysate

Lysates/proteins at 25 µg per lane.

Secondary

All lanes : Goat Anti-mouse IgG (H and L) HRP conjugated at 1/2500 dilution

Please note: All products are "FOR RESEARCH USE ONLY. NOT FOR USE IN DIAGNOSTIC PROCEDURES"

Our Abpromise to you: Quality guaranteed and expert technical support

- Replacement or refund for products not performing as stated on the datasheet
- Valid for 12 months from date of delivery
- Response to your inquiry within 24 hours
- We provide support in Chinese, English, French, German, Japanese and Spanish
- Extensive multi-media technical resources to help you
- We investigate all quality concerns to ensure our products perform to the highest standards

If the product does not perform as described on this datasheet, we will offer a refund or replacement. For full details of the Abpromise, please visit <https://www.abcam.co.jp/abpromise> or contact our technical team.

Terms and conditions

- Guarantee only valid for products bought direct from Abcam or one of our authorized distributors