

### SALL2 overexpression 293T lysate (whole cell) ab94229

画像数 2

医薬用外劇物

#### 製品の概要

製品名	SALL2 overexpression 293T lysate (whole cell)
特記事項	ab94229 is a 293T cell transfected lysate in which Human SALL2 has been transiently over-expressed using a pCMV-SALL2 plasmid. The lysate is provided in 1X Sample Buffer.
アプリケーション	適用あり: WB

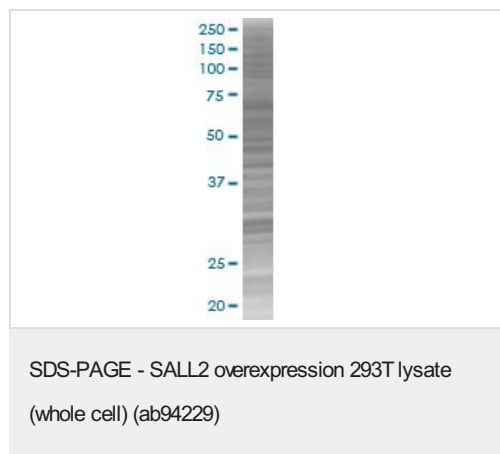
#### 製品の特性

Mycoplasma free	Yes
製品の状態	Liquid
保存方法	Shipped on dry ice. Upon delivery aliquot and store at -20°C. Avoid freeze / thaw cycles.
バッファー	Constituents: 0.01% Bromophenol blue, 2.3% Beta mercaptoethanol, 2% Sodium lauryl sulfate, 0.788% Tris HCl, 10% Glycerol (glycerin, glycerine)
背景	The region-specific homeotic gene sal (spalt) of Drosophila encodes a zinc finger protein of unusual but characteristic structure. These unique features were used to isolate sal-like genes from humans. Two sal-like transcription units SALL1 and SALL2, located on chromosomes 16q12.1 and 14q11.1-q12.1 respectively, have been isolated and characterized. SALL1 and SALL2 transcripts are expressed in a limited number of adult organs, including the brain. SALL2 is evenly expressed in different brain areas. Transcripts of both genes can be detected in fetal brain neurons. The arrangement of sal-like zinc finger domains and their high degree of sequence similarity suggest a novel and conserved subfamily of human zinc finger transcription factors that is closely related to the Drosophila gene product encoded by the gene sal.

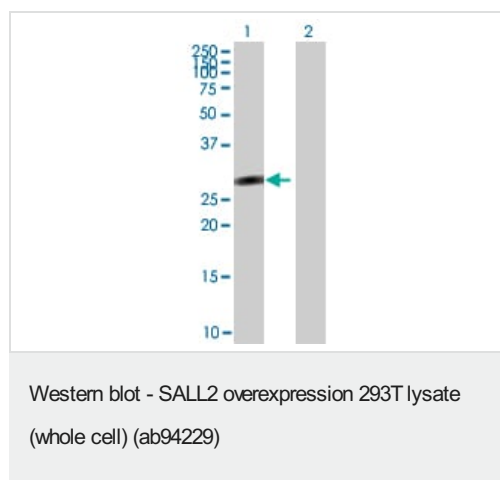
#### アプリケーション

**The Abpromise guarantee**      **Abpromise保証は、次のテスト済みアプリケーションにおけるab94229の使用に適用されます**  
 アプリケーションノートには、推奨の開始希釈率がありますが、適切な希釈率につきましてはご検討ください。

アプリケーション	Abreviews	特記事項
WB		Use at an assay dependent dilution.



ab94229 at 15µg/lane on an SDS-PAGE gel



**All lanes :** Anti-SALL2 antibody (**ab55723**) at 1/500 dilution

**Lane 1 :** SALL2 overexpression 293T lysate (whole cell) (ab94229)

**Lane 2 :** 293T non-transfected lysate

Lysates/proteins at 25 µg per lane.

#### Secondary

**All lanes :** Goat Anti-mouse IgG (H and L) HRP conjugated at 1/2500 dilution

**Please note:** All products are "FOR RESEARCH USE ONLY. NOT FOR USE IN DIAGNOSTIC PROCEDURES"

### Our Abpromise to you: Quality guaranteed and expert technical support

- Replacement or refund for products not performing as stated on the datasheet
- Valid for 12 months from date of delivery
- Response to your inquiry within 24 hours
- We provide support in Chinese, English, French, German, Japanese and Spanish
- Extensive multi-media technical resources to help you
- We investigate all quality concerns to ensure our products perform to the highest standards

If the product does not perform as described on this datasheet, we will offer a refund or replacement. For full details of the Abpromise, please visit <https://www.abcam.co.jp/abpromise> or contact our technical team.

### Terms and conditions

- Guarantee only valid for products bought direct from Abcam or one of our authorized distributors