

### RFC2 overexpression 293T lysate (whole cell) ab94285

画像数 2

医薬用外劇物

#### 製品の概要

製品名	RFC2 overexpression 293T lysate (whole cell)
特記事項	ab94285 is a 293T cell transfected lysate in which Human RFC2 has been transiently over-expressed using a pCMV-RFC2 plasmid. The lysate is provided in 1X Sample Buffer.
アプリケーション	適用あり: WB

#### 製品の特性

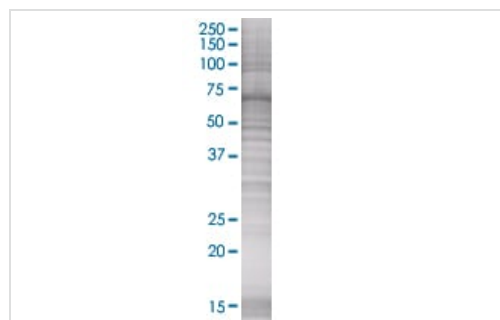
Mycoplasma free	Yes
製品の状態	Liquid
保存方法	Shipped on dry ice. Upon delivery aliquot and store at -20°C. Avoid freeze / thaw cycles.
バッファー	Constituents: 0.01% Bromophenol blue, 2.3% Beta mercaptoethanol, 2% Sodium lauryl sulfate, 0.788% Tris HCl, 10% Glycerol (glycerin, glycerine)
背景	Function: The elongation of primed DNA templates by DNA polymerase delta and epsilon requires the action of the accessory proteins proliferating cell nuclear antigen (PCNA) and activator 1. This subunit binds ATP. Disease: Note=RFC2 is located in the Williams-Beuren syndrome (WBS) critical region. WBS results from a hemizygous deletion of several genes on chromosome 7q11.23, thought to arise as a consequence of unequal crossing over between highly homologous low-copy repeat sequences flanking the deleted region. Similarity: Belongs to the activator 1 small subunits family.

#### アプリケーション

The Abpromise guarantee Abpromise保証は、次のテスト済みアプリケーションにおけるab94285の使用に適用されます  
 アプリケーションノートには、推奨の開始希釈率がありますが、適切な希釈率につきましてはご検討ください。

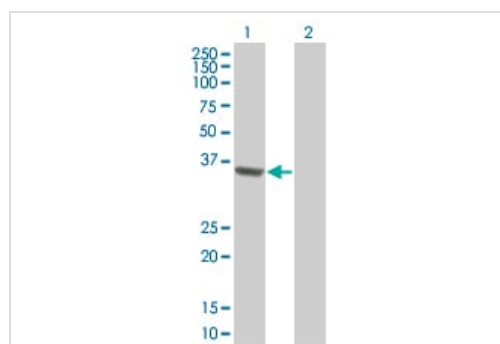
アプリケーション	Abreviews	特記事項
WB		Use at an assay dependent dilution.

## 画像



SDS-PAGE - RFC2 overexpression 293T lysate  
(whole cell) (ab94285)

ab94285 at 15µg/lane on an SDS-PAGE gel.



Western blot - RFC2 overexpression 293T lysate  
(whole cell) (ab94285)

**All lanes :** Anti-RFC2 antibody ([ab88502](#)) at 1/500 dilution

**Lane 1 :** RFC2 overexpression 293T lysate (whole cell) (ab94285)

**Lane 2 :** 293T Non Transfected Lysate

Lysates/proteins at 25 µg per lane.

### Secondary

**All lanes :** Goat Anti-mouse IgG (H and L) HRP conjugated, at  
1/2500 dilution

**Please note:** All products are "FOR RESEARCH USE ONLY. NOT FOR USE IN DIAGNOSTIC PROCEDURES"

## Our Abpromise to you: Quality guaranteed and expert technical support

- Replacement or refund for products not performing as stated on the datasheet
- Valid for 12 months from date of delivery
- Response to your inquiry within 24 hours
- We provide support in Chinese, English, French, German, Japanese and Spanish
- Extensive multi-media technical resources to help you
- We investigate all quality concerns to ensure our products perform to the highest standards

If the product does not perform as described on this datasheet, we will offer a refund or replacement. For full details of the Abpromise, please visit <https://www.abcam.co.jp/abpromise> or contact our technical team.

## Terms and conditions

- Guarantee only valid for products bought direct from Abcam or one of our authorized distributors