

# MCT1/Monocarboxylic acid transporter 1 overexpression 293T lysate (whole cell) ab94055

画像数 2

医薬用外劇物

### 製品の概要

製品名	MCT1/Monocarboxylic acid transporter 1 overexpression 293T lysate (whole cell)
特記事項	ab94055 is a 293T cell transfected lysate in which Human Monocarboxylic acid transporter 1 has been transiently over-expressed using a pCMV-Monocarboxylic acid transporter 1 plasmid. The lysate is provided in 1X Sample Buffer.
アプリケーション	適用あり: WB

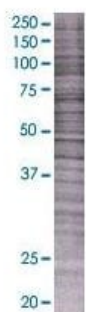
### 製品の特性

Mycoplasma free	Yes
製品の状態	Liquid
保存方法	Shipped on dry ice. Upon delivery aliquot and store at -20°C. Avoid freeze / thaw cycles.
バッファー	Constituents: 0.01% Bromophenol blue, 2.3% Beta mercaptoethanol, 2% Sodium lauryl sulfate, 0.788% Tris HCl, 10% Glycerol (glycerin, glycerine)
背景	Function: Proton-linked monocarboxylate transporter. Catalyzes the rapid transport across the plasma membrane of many monocarboxylates such as lactate, pyruvate, branched-chain oxo acids derived from leucine, valine and isoleucine, and the ketone bodies acetoacetate, beta-hydroxybutyrate and acetate. Tissue specificity: Widely expressed in normal and in cancer cells. Disease: Symptomatic deficiency in lactate transport Familial hyperinsulinemic hypoglycemia 7 Similarity: Belongs to the major facilitator superfamily. Monocarboxylate porter (TC 2.A.1.13) family.

### アプリケーション

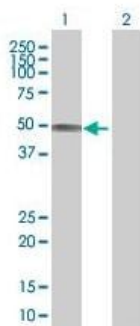
The Abpromise guarantee Abpromise保証は、 次のテスト済みアプリケーションにおけるab94055の使用に適用されます  
アプリケーションノートには、推奨の開始希釈率がありますが、適切な希釈率につきましてはご検討ください。

アプリケーション	Abreviews	特記事項
WB		Use at an assay dependent dilution.



SDS-PAGE - MCT1/Monocarboxylic acid transporter  
1 overexpression 293T lysate (whole cell) (ab94055)

ab94055 at 15 µg/lane on an SDS-PAGE gel



Western blot - MCT1/Monocarboxylic acid  
transporter 1 overexpression 293T lysate (whole cell)  
(ab94055)

**All lanes :** Anti-MCT1/Monocarboxylic acid transporter 1 antibody  
([ab90582](#)) at 1/500 dilution

**Lane 1 :** MCT1/Monocarboxylic acid transporter 1 overexpression  
293T lysate (whole cell) (ab94055)

**Lane 2 :** 293T non-transfected Lysate

Lysates/proteins at 25 µg per lane.

#### Secondary

**All lanes :** Goat Anti-mouse IgG (H and L) HRP conjugated at  
1/2500 dilution

**Please note:** All products are "FOR RESEARCH USE ONLY. NOT FOR USE IN DIAGNOSTIC PROCEDURES"

### Our Abpromise to you: Quality guaranteed and expert technical support

- Replacement or refund for products not performing as stated on the datasheet
- Valid for 12 months from date of delivery
- Response to your inquiry within 24 hours
- We provide support in Chinese, English, French, German, Japanese and Spanish
- Extensive multi-media technical resources to help you
- We investigate all quality concerns to ensure our products perform to the highest standards

If the product does not perform as described on this datasheet, we will offer a refund or replacement. For full details of the Abpromise, please visit <https://www.abcam.co.jp/abpromise> or contact our technical team.

## Terms and conditions

---

- Guarantee only valid for products bought direct from Abcam or one of our authorized distributors