

M-CSF overexpression 293T lysate (whole cell) ab94076

画像数 2

医薬用外劇物

製品の概要

製品名	M-CSF overexpression 293T lysate (whole cell)
特記事項	ab94076 is a 293T cell transfected lysate in which Human MCSF has been transiently over-expressed using a pCMV-MCSF plasmid. The lysate is provided in 1X Sample Buffer.
アプリケーション	適用あり: WB

製品の特性

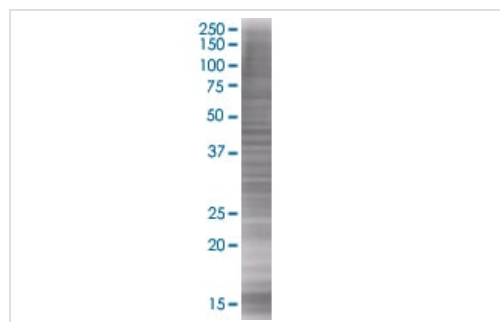
Mycoplasma free	Yes
製品の状態	Liquid
保存方法	Shipped on dry ice. Upon delivery aliquot and store at -20°C. Avoid freeze / thaw cycles.
バッファー	Constituents: 0.01% Bromophenol blue, 2.3% Beta mercaptoethanol, 2% Sodium lauryl sulfate, 0.788% Tris HCl, 10% Glycerol (glycerin, glycerine)
背景	Function: Granulocyte/macrophage colony-stimulating factors are cytokines that act in hematopoiesis by controlling the production, differentiation, and function of 2 related white cell populations of the blood, the granulocytes and the monocytes-macrophages. CSF-1 induces cells of the monocyte/macrophage lineage. It plays a role in immunological defenses, bone metabolism, lipoproteins clearance, fertility and pregnancy. PTM: Glycosylation and proteolytic cleavage yield different soluble forms. A high molecular weight soluble form is a proteoglycan containing chondroitin sulfate. Isoform 1 is N- and O-glycosylated. Isoform 3 is N-glycosylated.

アプリケーション

The Abpromise guarantee **Abpromise保証は、次のテスト済みアプリケーションにおけるab94076の使用に適用されます**
 アプリケーションノートには、推奨の開始希釈率がありますが、適切な希釈率につきましてはご検討ください。

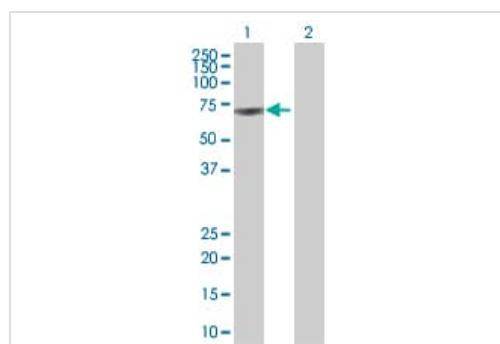
アプリケーション	Abreviews	特記事項
WB		Use at an assay dependent dilution.

画像



SDS-PAGE - M-CSF overexpression 293T lysate
(whole cell) (ab94076)

ab94076 at 15µg/lane on an SDS-PAGE gel.



Western blot - M-CSF overexpression 293T lysate
(whole cell) (ab94076)

All lanes : Anti-MCSF antibody (**ab66236**) at 1/500 dilution

Lane 1 : M-CSF overexpression 293T lysate (whole cell)
(ab94076)

Lane 2 : 293T non transfected lysate

Lysates/proteins at 25 µg per lane.

Secondary

All lanes : Goat Anti-mouse IgG (H and L) HRP conjugated at
1/2500 dilution

Please note: All products are "FOR RESEARCH USE ONLY. NOT FOR USE IN DIAGNOSTIC PROCEDURES"

Our Abpromise to you: Quality guaranteed and expert technical support

- Replacement or refund for products not performing as stated on the datasheet
- Valid for 12 months from date of delivery
- Response to your inquiry within 24 hours
- We provide support in Chinese, English, French, German, Japanese and Spanish
- Extensive multi-media technical resources to help you
- We investigate all quality concerns to ensure our products perform to the highest standards

If the product does not perform as described on this datasheet, we will offer a refund or replacement. For full details of the Abpromise, please visit <https://www.abcam.co.jp/abpromise> or contact our technical team.

Terms and conditions

- Guarantee only valid for products bought direct from Abcam or one of our authorized distributors