

KMT1E / SETDB1 overexpression 293T lysate (whole cell) ab94305

画像数 2

医薬用外劇物

製品の概要

製品名	KMT1E / SETDB1 overexpression 293T lysate (whole cell)
特記事項	ab94305 is a 293T cell transfected lysate in which Human KMT1E / SETDB1 has been transiently over-expressed using a pCMV-KMT1E / SETDB1 plasmid. The lysate is provided in 1X Sample Buffer.
アプリケーション	適用あり: WB

製品の特性

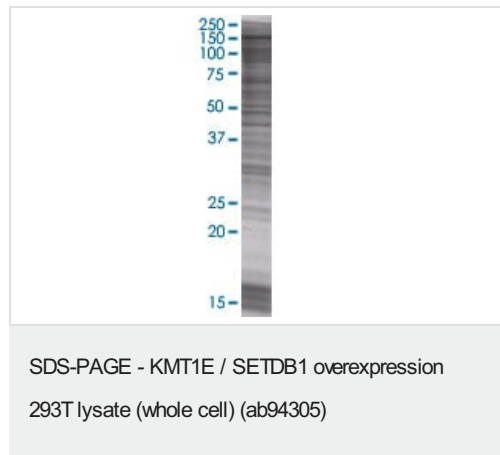
Mycoplasma free	Yes
製品の状態	Liquid
保存方法	Shipped on dry ice. Upon delivery aliquot and store at -20°C. Avoid freeze / thaw cycles.
バッファー	Constituents: 0.01% Bromophenol blue, 2.3% Beta mercaptoethanol, 2% Sodium lauryl sulfate, 0.788% Tris HCl, 10% Glycerol (glycerin, glycerine)
背景	Domain: The pre-SET, SET and post-SET domains are all required for methyltransferase activity. The 347-amino-acid insertion in the SET domain has no effect on the catalytic activity. Isoform 2 lacks all domains required for histone methyltransferase activity. Function: Histone methyltransferase that specifically trimethylates 'Lys-9' of histone H3. H3 'Lys-9' trimethylation represents a specific tag for epigenetic transcriptional repression by recruiting HP1 (CBX1, CBX3 and/or CBX5) proteins to methylated histones. Mainly functions in euchromatin regions, thereby playing a central role in the silencing of euchromatic genes. H3 'Lys-9' trimethylation is coordinated with DNA methylation. Probably forms a complex with MBD1 and ATF7IP that represses transcription and couples DNA methylation and histone 'Lys-9' trimethylation. Its activity is dependent on MBD1 and is heritably maintained through DNA replication by being recruited by CAF-1. SETDB1 is targeted to histone H3 by TRIM28/TIF1B, a factor recruited by KRAB zinc-finger proteins. Similarity: Belongs to the histone-lysine methyltransferase family. Suvar3-9 subfamily. Contains 1 MBD (methyl-CpG-binding) domain. Contains 1 post-SET domain. Contains 1 pre-SET domain. Contains 1 SET domain. Contains 2 Tudor domains. Tissue specificity: Widely expressed. High expression in testis.

アプリケーション

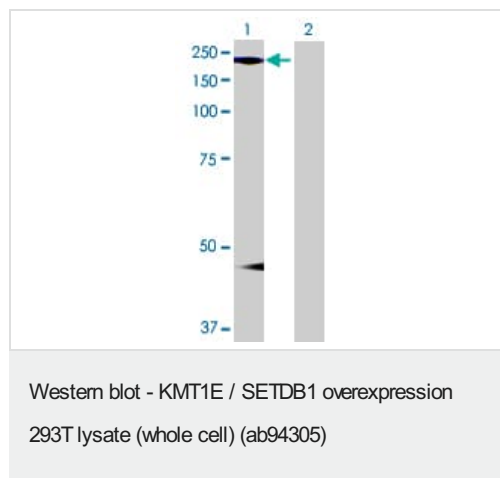
The Abpromise guarantee Abpromise保証は、 次のテスト済みアプリケーションにおけるab94305の使用に適用されます
アプリケーションノートには、推奨の開始希釈率がありますが、適切な希釈率につきましてはご検討ください。

アプリケーション	Abreviews	特記事項
WB		Use at an assay dependent dilution.

画像



ab94305 at 15µg/lane on an SDS-PAGE gel



All lanes : Anti-KMT1E / SETDB1 antibody ([ab61329](#)) at 1/500 dilution

Lane 1 : KMT1E / SETDB1 overexpression 293T lysate (whole cell) (ab94305)

Lane 2 : 293T non-transfected lysate

Lysates/proteins at 25 µg per lane.

Secondary

All lanes : Goat Anti-mouse IgG (H and L) HRP conjugated at 1/2500 dilution

Please note: All products are "FOR RESEARCH USE ONLY. NOT FOR USE IN DIAGNOSTIC PROCEDURES"

Our Abpromise to you: Quality guaranteed and expert technical support

- Replacement or refund for products not performing as stated on the datasheet
- Valid for 12 months from date of delivery
- Response to your inquiry within 24 hours
- We provide support in Chinese, English, French, German, Japanese and Spanish
- Extensive multi-media technical resources to help you

- We investigate all quality concerns to ensure our products perform to the highest standards

If the product does not perform as described on this datasheet, we will offer a refund or replacement. For full details of the Abpromise, please visit <https://www.abcam.co.jp/abpromise> or contact our technical team.

Terms and conditions

- Guarantee only valid for products bought direct from Abcam or one of our authorized distributors