

HLA E overexpression 293T lysate (whole cell) ab94202

画像数 2

医薬用外劇物

製品の概要

|          |                                                                                                                                                                            |
|----------|----------------------------------------------------------------------------------------------------------------------------------------------------------------------------|
| 製品名      | HLA E overexpression 293T lysate (whole cell)                                                                                                                              |
| 特記事項     | ab94202 is a 293T cell transfected lysate in which Human HLA E has been transiently over-expressed using a pCMV-HLA E plasmid. The lysate is provided in 1X Sample Buffer. |
| アプリケーション | 適用あり: WB                                                                                                                                                                   |

製品の特性

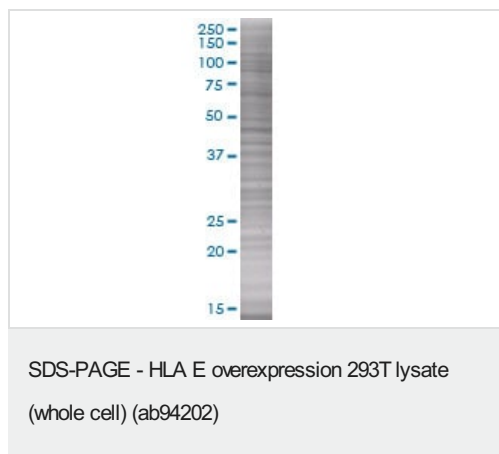
|                 |                                                                                                                                                                                                                                                                                                                             |
|-----------------|-----------------------------------------------------------------------------------------------------------------------------------------------------------------------------------------------------------------------------------------------------------------------------------------------------------------------------|
| Mycoplasma free | Yes                                                                                                                                                                                                                                                                                                                         |
| 製品の状態           | Liquid                                                                                                                                                                                                                                                                                                                      |
| 保存方法            | Shipped on dry ice. Upon delivery aliquot and store at -20°C. Avoid freeze / thaw cycles.                                                                                                                                                                                                                                   |
| バッファー           | Constituents: 0.01% Bromophenol blue, 2.3% Beta mercaptoethanol, 2% Sodium lauryl sulfate, 0.788% Tris HCl, 10% Glycerol (glycerin, glycerine)                                                                                                                                                                              |
| 背景              | HLA E belongs to the HLA class I heavy chain paralogues. This class I molecule is a heterodimer consisting of a heavy chain and a light chain (beta-2 microglobulin). The heavy chain is anchored in the membrane. HLA E binds a restricted subset of peptides derived from the leader peptides of other class I molecules. |

アプリケーション

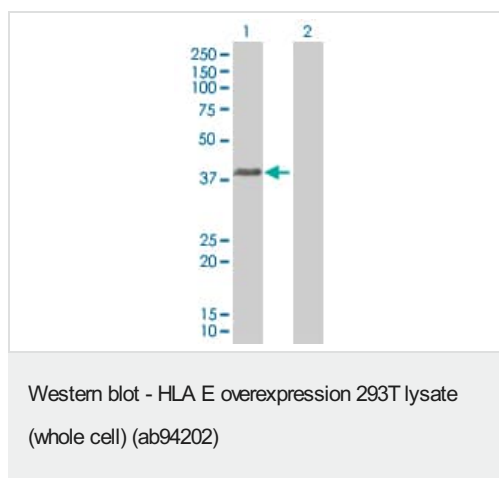
The Abpromise guarantee      Abpromise保証は、次のテスト済みアプリケーションにおけるab94202の使用に適用されます  
アプリケーションノートには、推奨の開始希釈率がありますが、適切な希釈率につきましてはご検討ください。

| アプリケーション | Abreviews | 特記事項                                |
|----------|-----------|-------------------------------------|
| WB       |           | Use at an assay dependent dilution. |

画像



ab94202 at 15µg/lane on an SDS-PAGE gel.



**All lanes :** Anti-HLA E antibody (**ab88090**) at 1/500 dilution

**Lane 1 :** HLA E overexpression 293T lysate (whole cell) (ab94202)

**Lane 2 :** 293T non-transfected lysate

Lysates/proteins at 25 µg per lane.

#### Secondary

**All lanes :** Goat Anti-mouse IgG (H and L) HRP conjugated at 1/2500 dilution

**Please note:** All products are "FOR RESEARCH USE ONLY. NOT FOR USE IN DIAGNOSTIC PROCEDURES"

### Our Abpromise to you: Quality guaranteed and expert technical support

- Replacement or refund for products not performing as stated on the datasheet
- Valid for 12 months from date of delivery
- Response to your inquiry within 24 hours
- We provide support in Chinese, English, French, German, Japanese and Spanish
- Extensive multi-media technical resources to help you
- We investigate all quality concerns to ensure our products perform to the highest standards

If the product does not perform as described on this datasheet, we will offer a refund or replacement. For full details of the Abpromise, please visit <https://www.abcam.co.jp/abpromise> or contact our technical team.

### Terms and conditions

- Guarantee only valid for products bought direct from Abcam or one of our authorized distributors