

FAK overexpression 293T lysate (whole cell) ab94321

画像数 2

医薬用外劇物

製品の概要

製品名	FAK overexpression 293T lysate (whole cell)
特記事項	ab94321 is a 293T cell transfected lysate in which Human FAK has been transiently over-expressed using a pCMV-FAK plasmid. The lysate is provided in 1X Sample Buffer.
アプリケーション	適用あり: WB

製品の特性

Mycoplasma free	Yes
製品の状態	Liquid
保存方法	Shipped on dry ice. Upon delivery aliquot and store at -20°C. Avoid freeze / thaw cycles.
バッファー	Constituents: 0.01% Bromophenol blue, 2.3% Beta mercaptoethanol, 2% Sodium lauryl sulfate, 0.788% Tris HCl, 10% Glycerol (glycerin, glycerine)
背景	<p>Domain: The first Pro-rich domain interacts with the SH3 domain of CRK-associated substrate (BCAR1) and CASL. The carboxy-terminal region is the site of focal adhesion targeting (FAT) sequence which mediates the localization of FAK1 to focal adhesions. Function: Non-receptor protein-tyrosine kinase implicated in signaling pathways involved in cell motility, proliferation and apoptosis. Activated by tyrosine-phosphorylation in response to either integrin clustering induced by cell adhesion or antibody cross-linking, or via G-protein coupled receptor (GPCR) occupancy by ligands such as bombesin or lysophosphatidic acid, or via LDL receptor occupancy. Microtubule-induced dephosphorylation at Tyr-397 is crucial for the induction of focal adhesion disassembly. Plays a potential role in oncogenic transformations resulting in increased kinase activity. PTM: Phosphorylated on 6 tyrosine residues upon activation. Microtubule-induced dephosphorylation at Tyr-397 could be catalyzed by PTPN11 and regulated by ZFYVE21. Dephosphorylated by PTPN11 upon EPHA2 activation by its ligand EFNA1. Similarity: Belongs to the protein kinase superfamily. Tyr protein kinase family. FAK subfamily. Contains 1 FERM domain. Contains 1 protein kinase domain. Tissue specificity: Expressed in all organs tested, in lymphoid cell lines, but most abundantly in brain.</p>

アプリケーション

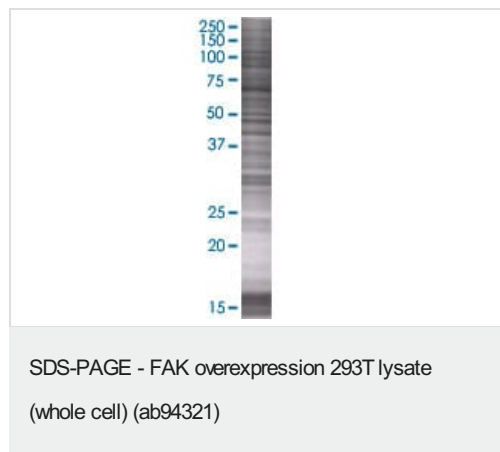
The Abpromise guarantee

Abpromise保証は、次のテスト済みアプリケーションにおけるab94321の使用に適用されます

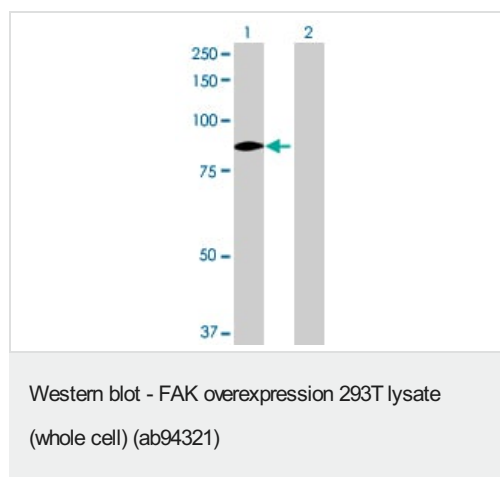
アプリケーションノートには、推奨の開始希釈率がありますが、適切な希釈率につきましてはご検討ください。

アプリケーション	Abreviews	特記事項
WB		Use at an assay dependent dilution.

画像



ab94321 at 15µg/lane on an SDS-PAGE gel.



All lanes : Anti-FAK antibody ([ab55632](#)) at 1/500 dilution

Lane 1 : FAK overexpression 293T lysate (whole cell) (ab94321)

Lane 2 : 293T non-transfected lysate

Lysates/proteins at 25 µg per lane.

Secondary

All lanes : Goat Anti-mouse IgG (H and L) HRP conjugated at 1/2500 dilution

Please note: All products are "FOR RESEARCH USE ONLY. NOT FOR USE IN DIAGNOSTIC PROCEDURES"

Our Abpromise to you: Quality guaranteed and expert technical support

- Replacement or refund for products not performing as stated on the datasheet
- Valid for 12 months from date of delivery
- Response to your inquiry within 24 hours
- We provide support in Chinese, English, French, German, Japanese and Spanish
- Extensive multi-media technical resources to help you
- We investigate all quality concerns to ensure our products perform to the highest standards

If the product does not perform as described on this datasheet, we will offer a refund or replacement. For full details of the Abpromise, please visit <https://www.abcam.co.jp/abpromise> or contact our technical team.

Terms and conditions

- Guarantee only valid for products bought direct from Abcam or one of our authorized distributors