

E. coli Positive Control (Escherichia coli) Whole Cell Lysate - expressing 6X His tag protein ab2431

3 References [画像数 1](#)

製品の概要

製品名	E. coli Positive Control (Escherichia coli) Whole Cell Lysate - expressing 6X His tag protein
特記事項	This lysate can be used as a positive control for Western blots using lysates containing 6X-His tagged proteins.
アプリケーション	適用あり: WB

製品の特性

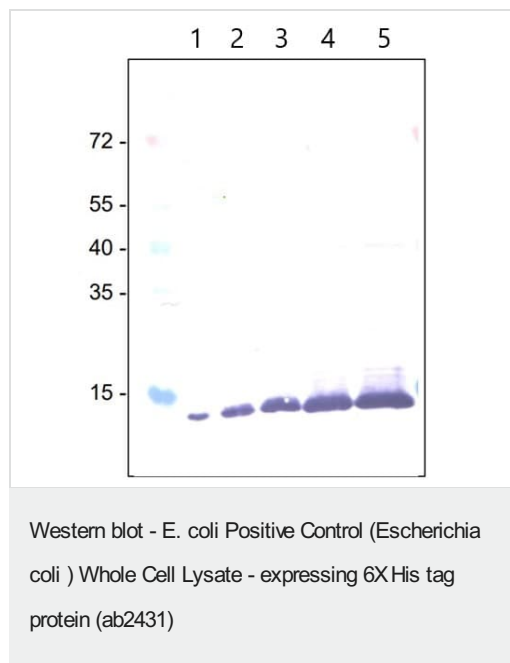
Mycoplasma free	Yes
製品の状態	Lyophilized:After the lyophilised pellet is dissolved in 250 ul SDS-gel sample buffer (1 mg/ml protein lysate) it can be used direct for sample loading and then stored at -20°C. The sample can be reused several times
保存方法	Store at +4°C short term (1-2 weeks). Aliquot and store at -20°C or -80°C. Avoid repeated freeze / thaw cycles.
ライゼート 備考	The cell lysate was prepared from E.coli (Tuner [De3]) expressing a 14.2 kDa protein containing a C-terminal 6xHis tag.

アプリケーション

The Abpromise guarantee **Abpromise保証は、次のテスト済みアプリケーションにおけるab2431の使用に適用されます**

アプリケーションノートには、推奨の開始希釈率がありますが、適切な希釈率につきましてはご検討ください。

アプリケーション	Abreviews	特記事項
WB		Use at an assay dependent concentration. This E. coli (strain BL21)lysate contains a recombinant C-terminal 6x-His tagged protein of 17 kDa. The his-tagged protein is monomeric and will be detected under reducing and non-reducing conditions. Use 5-20 µg per lane of a mini-gel at 12-15 % SDS-PAGE. After the lyophilised pellet is dissolved in 250 µl SDS-gel sample buffer (1 mg/ml protein lysate) it can be used direct for



All lanes : Rabbit anti-His-tag antibody

Lane 1 : E. coli Positive Control (Escherichia coli) Whole Cell Lysate - expressing 6X His tag protein (ab2431) at 2 µg

Lane 2 : E. coli Positive Control (Escherichia coli) Whole Cell Lysate - expressing 6X His tag protein (ab2431) at 5 µg

Lane 3 : E. coli Positive Control (Escherichia coli) Whole Cell Lysate - expressing 6X His tag protein (ab2431) at 10 µg

Lane 4 : E. coli Positive Control (Escherichia coli) Whole Cell Lysate - expressing 6X His tag protein (ab2431) at 15 µg

Lane 5 : E. coli Positive Control (Escherichia coli) Whole Cell Lysate - expressing 6X His tag protein (ab2431) at 20 µg

Secondary

All lanes : Goat anti-rabbit antibody (AP-conjugated)

Please note: All products are "FOR RESEARCH USE ONLY. NOT FOR USE IN DIAGNOSTIC PROCEDURES"

Our Abpromise to you: Quality guaranteed and expert technical support

- Replacement or refund for products not performing as stated on the datasheet
- Valid for 12 months from date of delivery
- Response to your inquiry within 24 hours
- We provide support in Chinese, English, French, German, Japanese and Spanish
- Extensive multi-media technical resources to help you
- We investigate all quality concerns to ensure our products perform to the highest standards

If the product does not perform as described on this datasheet, we will offer a refund or replacement. For full details of the Abpromise, please visit <https://www.abcam.co.jp/abpromise> or contact our technical team.

Terms and conditions

- Guarantee only valid for products bought direct from Abcam or one of our authorized distributors