

### CIDE A overexpression 293T lysate (whole cell) ab94105

画像数 2

医薬用外劇物

#### 製品の概要

製品名	CIDE A overexpression 293T lysate (whole cell)
特記事項	ab94105 is a 293T cell transfected lysate in which Human CIDE A has been transiently over-expressed using a pCMV-CIDE A plasmid. The lysate is provided in 1X Sample Buffer.
アプリケーション	適用あり: WB

#### 製品の特性

Mycoplasma free	Yes
製品の状態	Liquid
保存方法	Shipped on dry ice. Upon delivery aliquot and store at -20°C. Avoid freeze / thaw cycles.
バッファー	Constituents: 0.01% Bromophenol blue, 2.3% Beta mercaptoethanol, 2% Sodium lauryl sulfate, 0.788% Tris HCl, 10% Glycerol (glycerin, glycerine)
背景	<p>Function: Acts as a CEBPB coactivator in mammary epithelial cells to control the expression of a subset of CEBPB downstream target genes, including ID2, IGF1, PRLR, SOCS1, SOCS3, XDH, but not casein. By interacting with CEBPB, strengthens the association of CEBPB with the XDH promoter, increases histone acetylation and dissociates HDAC1 from the promoter (By similarity). Binds to lipid droplets and regulates their enlargement, thereby restricting lipolysis and favoring storage. At focal contact sites between lipid droplets, promotes directional net neutral lipid transfer from the smaller to larger lipid droplets. The transfer direction may be driven by the internal pressure difference between the contacting lipid droplet pair and occurs at a lower rate than that promoted by CIDEA. When overexpressed, induces apoptosis. The physiological significance of its role in apoptosis is unclear. Tissue specificity: Expressed in omental and subcutaneous adipose tissue (at protein level). Disease: In omental and subcutaneous adipose tissue of obese patients matched for BMI, expression levels correlate with insulin sensitivity. Expression is increased 5-6 fold in the group of patients with high insulin sensitivity, compared to the insulin-resistant group. This observation is consistent with the idea that triglyceride storage in adipocytes plays an important role in sequestering triglycerides and fatty acids away from the circulation and peripheral tissues, thus enhancing insulin sensitivity in liver and muscle. Similarity: Contains 1 CIDE-N domain.</p>

#### アプリケーション

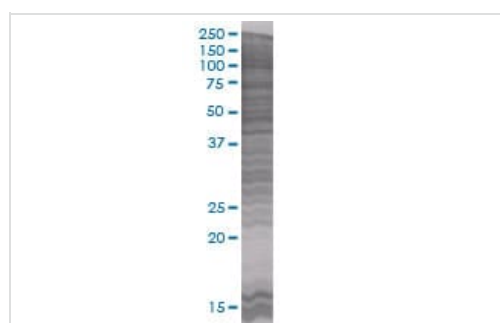
## The Abpromise guarantee

**Abpromise保証は、**次のテスト済みアプリケーションにおけるab94105の使用に適用されます

アプリケーションノートには、推奨の開始希釈率がありますが、適切な希釈率につきましてはご検討ください。

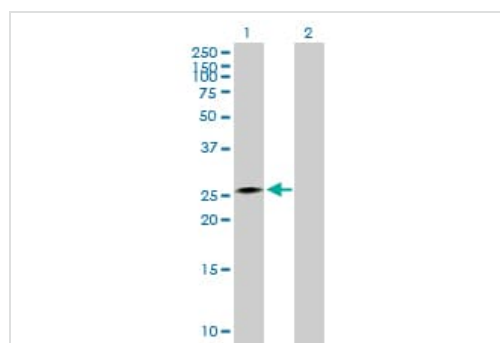
アプリケーション	Abreviews	特記事項
WB		Use at an assay dependent dilution.

## 画像



SDS-PAGE - CIDE A overexpression 293T lysate  
(whole cell) (ab94105)

ab94105 at 15µg/lane on an SDS-PAGE gel.



Western blot - CIDE A overexpression 293T lysate  
(whole cell) (ab94105)

**All lanes :** Anti-CIDE A antibody (**ab54630**) at 1/500 dilution

**Lane 1 :** CIDE A overexpression 293T lysate (whole cell)  
(ab94105)

**Lane 2 :** 293T non-transfected lysate

Lysates/proteins at 25 µg per lane.

### Secondary

**All lanes :** Goat Anti-mouse IgG (H and L) HRP conjugated at  
1/2500 dilution

**Please note:** All products are "FOR RESEARCH USE ONLY. NOT FOR USE IN DIAGNOSTIC PROCEDURES"

## Our Abpromise to you: Quality guaranteed and expert technical support

- Replacement or refund for products not performing as stated on the datasheet
- Valid for 12 months from date of delivery
- Response to your inquiry within 24 hours
- We provide support in Chinese, English, French, German, Japanese and Spanish
- Extensive multi-media technical resources to help you
- We investigate all quality concerns to ensure our products perform to the highest standards

If the product does not perform as described on this datasheet, we will offer a refund or replacement. For full details of the Abpromise,

please visit <https://www.abcam.co.jp/abpromise> or contact our technical team.

## **Terms and conditions**

---

- Guarantee only valid for products bought direct from Abcam or one of our authorized distributors