

# Staurosporine, Protein kinase inhibitor ab120056

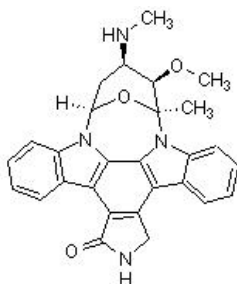
**27 References**    **画像数 6**

### 製品の概要

製品名	Staurosporine, Protein kinase inhibitor
製品の詳細	Protein kinase inhibitor
生理活性の詳細	Potent, cell-permeable, broad spectrum inhibitor of protein kinases. Kinases inhibited include: protein kinase C (IC <sub>50</sub> = 3 nM), cAMP-dependent protein kinase (IC <sub>50</sub> = 8 nM) and p60v-src (IC <sub>50</sub> = 6 nM).

CAS 番号 62996-74-1

### 構造式



### 製品の特性

体系名	[9S-(9α,10β,11β,13α)]-2,3,10,11,12,13-Hexahydro-10-methoxy-9-methyl-11-(methylamino)-9,13-epoxy-1 <i>H</i> ,9 <i>H</i> -diindolo[1,2,3- <i>gh</i> :3,2,1- <i>lm</i> ]pyrrolo[3,4- <i>j</i> ][1,7]benzodiazonin-1-one
分子量	466.54
分子式	C <sub>28</sub> H <sub>26</sub> N <sub>4</sub> O <sub>3</sub>
PubChem 登録番号	44259
保存方法	Store at +4°C. Store under desiccating conditions. The product can be stored for up to 12 months.
溶解性	Soluble in DMSO to 50 mM
使用に関する注意	This product is supplied in one (or more) pack size which is freeze dried. Therefore the contents may not be readily visible, as they can coat the bottom or walls of the vial. Please see our <a href="#">FAQs</a> and <a href="#">information page</a> for more details on handling.

Wherever possible, you should prepare and use solutions on the same day. However, if you need to make up stock solutions in advance, we recommend that you store the solution as aliquots in tightly sealed vials at -20°C. Generally, these will be useable for up to one month. Before use, and

prior to opening the vial we recommend that you allow your product to equilibrate to room temperature for at least 1 hour.

Refer to SDS for further information

Need more advice on solubility, usage and handling? Please visit our [frequently asked questions \(FAQ\) page](#) for more details.

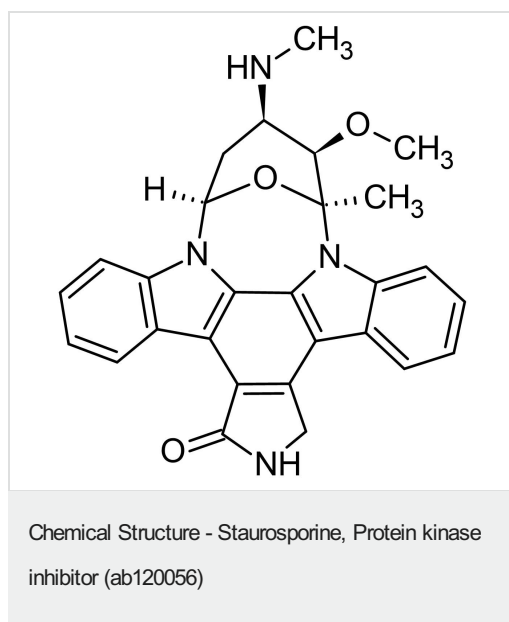
#### SMILES 線形表記

```
O=C6NCc5c2c4n(c1cccc12)[C@@]3(C)O[C@H](C[C@@H](NC)[C@H]3OC)n7c4c(c56)c8cccc78
```

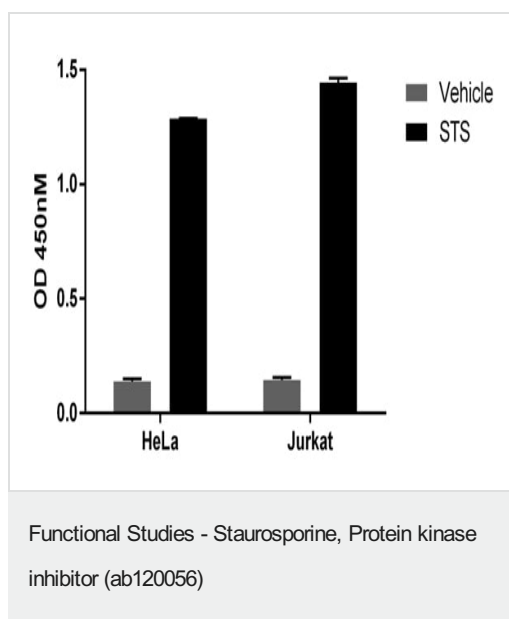
#### 由来

Synthetic

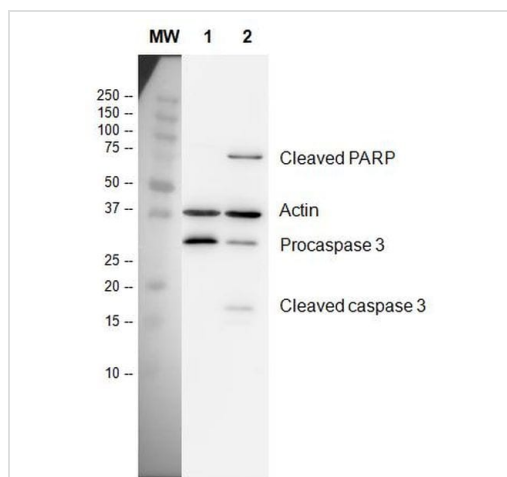
#### 画像



2D chemical structure image of ab120056, Staurosporine, Protein kinase inhibitor

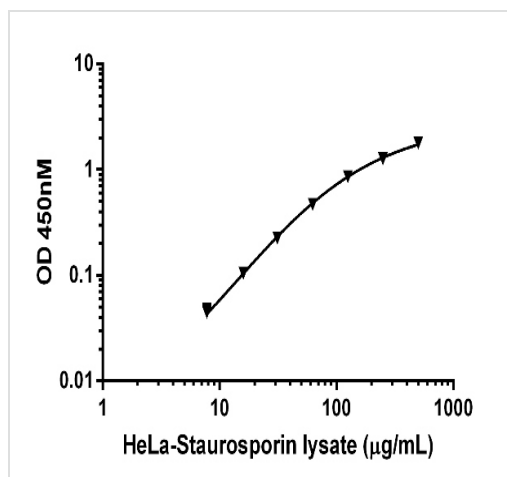


HeLa and Jurkat cells were treated with 1  $\mu$ M Staurosporine (STS) (ab120056) for 4 hours in complete cell culture media to induce apoptosis and cleaved PARP protein. Untreated and STS treated HeLa and Jurkat lysates were prepared in 1X Cell Extraction Buffer PTR and tested the Cleaved PARP SimpleStep<sup>TM</sup> ELISA. Raw OD 450 nm values are shown for 500  $\mu$ g/mL lysate loads.



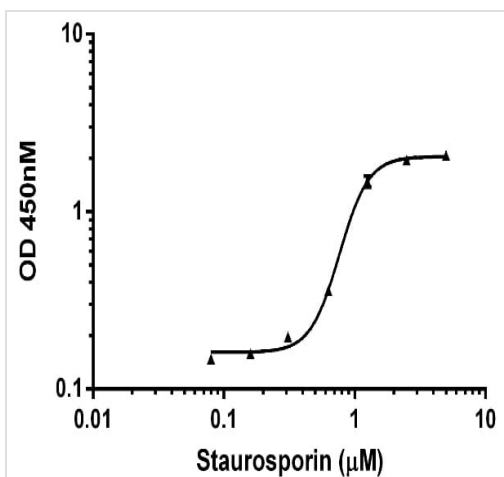
Functional Studies - Staurosporine, Protein kinase inhibitor (ab120056)

Lane 1: HeLa, vehicle (DMSO) treated for 4 hours Lane 2: HeLa 1  $\mu$ M staurosporine (ab120056), 4 hours Load 20  $\mu$ g/lane 5% milk/PBST for block and antibody diluent Primary antibodies (2 hours, room temp) All lanes: **ab136812** 250X Primary Antibodies Cocktail, 1/250 dilution Secondary antibodies (1 hour, room temp) All lanes: **ab136812** 100X HRP-Conjugated Secondary Antibodies Cocktail, 1/100 dilution



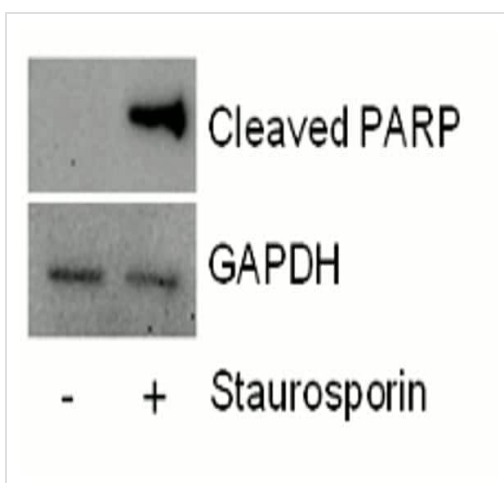
Functional Studies - Staurosporine, Protein kinase inhibitor (ab120056)

Example of HeLa staurosporine (ab120056) treated cell lysate titration. Background-subtracted data values (mean  $\pm$  SD) are graphed.



Functional Studies - Staurosporine, Protein kinase inhibitor (ab120056)

Example of IC<sub>50</sub> determination. HeLa cells were treated with a dose titration of Staurosporine for 4 hours in complete media. Cells were cultured and treated in a 96-well cell culture microtiter plate. Lysates were prepared by direct in-well lysis without media removal: 2X Cell Extraction Buffer PTR was added to an equal volume of media and then resulting lysate was used directly in the Cleaved PARP SimpleStep™ ELISA assay. Raw values for triplicate measurements are plotted. The calculated IC<sub>50</sub> is 0.77 μM.



Functional Studies - Staurosporine, Protein kinase inhibitor (ab120056)

Demonstration of Cleaved PARP capture antibody specificity by western blot assay. 20 μg of HeLa extracts that were untreated or treated for 4 hours with 1 μM Staurosporine were analyzed by western blot. The GAPDH blot is included to show the relative loads of each lysate. In the HeLa cell line, Staurosporine treatment is required to detect cleaved PARP protein, as observed in the SimpleStep ELISA.

**Please note:** All products are "FOR RESEARCH USE ONLY. NOT FOR USE IN DIAGNOSTIC PROCEDURES, NOT FOR USE IN HUMANS"

### Our Abpromise to you: Quality guaranteed and expert technical support

- Replacement or refund for products not performing as stated on the datasheet
- Valid for 12 months from date of delivery
- Response to your inquiry within 24 hours
- We provide support in Chinese, English, French, German, Japanese and Spanish
- Extensive multi-media technical resources to help you
- We investigate all quality concerns to ensure our products perform to the highest standards

If the product does not perform as described on this datasheet, we will offer a refund or replacement. For full details of the Abpromise, please visit <https://www.abcam.co.jp/abpromise> or contact our technical team.

## Terms and conditions

---

- Guarantee only valid for products bought direct from Abcam or one of our authorized distributors
- Abcam biochemicals are novel compounds and we have not tested their biological activity in house. Please use the literature to identify how to use these products effectively. If you require further assistance please contact the scientific support team