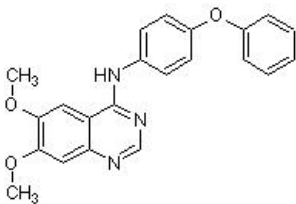


Src Kinase Inhibitor I (SKI-1) ab120839

6 References [画像数 2](#)

製品の概要

製品名	Src Kinase Inhibitor I (SKI-1)
製品の詳細	Potent, selective and dual site Src tyrosine kinase family inhibitor
生理活性の詳細	Potent, selective and dual site Src family tyrosine kinase inhibitor (IC ₅₀ values are 44 and 88 nM for Src and Lck, respectively). Cell-permeable, reversible and ATP-competitive. Interacts with both ATP and peptide-binding sites. Additionally inhibits VEGFR2 and C-fms (IC ₅₀ values are 0.32 and 30 μM, respectively). Induces apoptosis.
精製度	> 98%
CAS 番号	179248-59-0
構造式	

製品の特性

体系名	6,7-Dimethoxy- <i>N</i> -(4-phenoxyphenyl)-4-quinazolinamine
分子量	373.41
分子式	C ₂₂ H ₁₉ N ₃ O ₃
PubChem 登録番号	1474853
保存方法	Store at +4°C. Store under desiccating conditions. The product can be stored for up to 12 months.
溶解性	Soluble in DMSO to 50 mM
使用に関する注意	<p>Wherever possible, you should prepare and use solutions on the same day. However, if you need to make up stock solutions in advance, we recommend that you store the solution as aliquots in tightly sealed vials at -20°C. Generally, these will be useable for up to one month. Before use, and prior to opening the vial we recommend that you allow your product to equilibrate to room temperature for at least 1 hour.</p> <p>Refer to SDS for further information.</p>

Need more advice on solubility, usage and handling? Please visit our [frequently asked questions \(FAQ\) page](#) for more details.

SMILES 線形表記

COc1cc4c(cc1OC)ncnc4Nc3ccc(Oc2ccccc2)cc3

由来

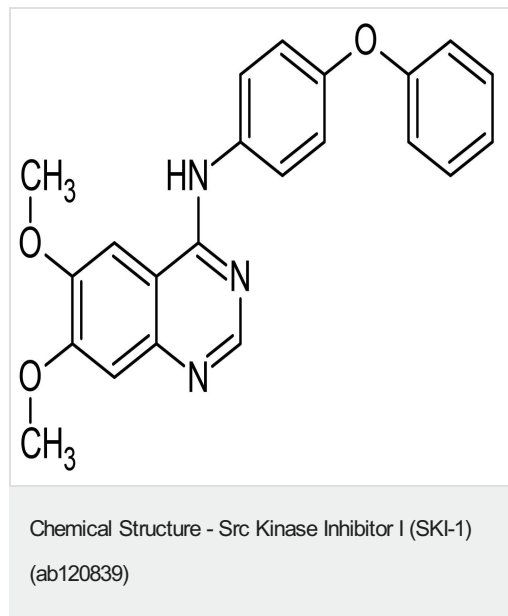
Synthetic

アプリケーション

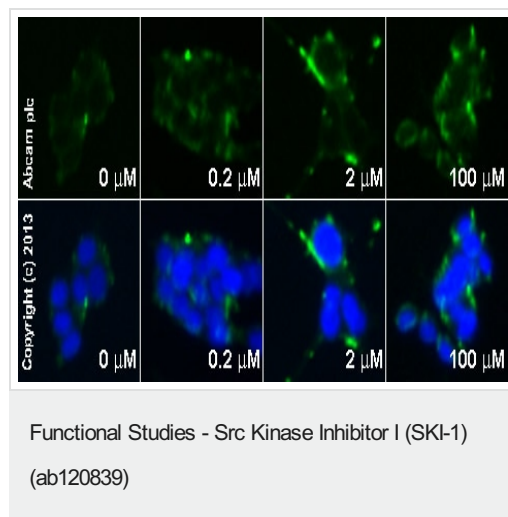
The Abpromise guarantee Abpromise保証は、 次のテスト済みアプリケーションにおけるab120839の使用に適用されます
アプリケーションノートには、推奨の開始希釈率がありますが、適切な希釈率につきましてはご確認ください。

アプリケーション	Abreviews	特記事項
Functional Studies		Use at an assay dependent concentration.

画像



2D chemical structure image of ab120839, Src Kinase Inhibitor I (SKI-1)



ab11512 staining E cadherin in SW480 cells treated with Src Kinase Inhibitor I (SKI-1) (ab120839), by ICC/IF. Increase of E cadherin expression correlates with increased concentration of Src Kinase Inhibitor I (SKI-1), as described in literature.
The cells were incubated at 37°C for 24h in media containing different concentrations of ab120839 (Src Kinase Inhibitor I (SKI-1)) in DMSO, fixed with 4% formaldehyde for 10 minutes at room temperature and blocked with PBS containing 10% goat serum, 0.3 M glycine, 1% BSA and 0.1% tween for 2h at room temperature. Staining of the treated cells with **ab11512** (5 μg/ml) was performed overnight at 4°C in PBS containing 1% BSA and 0.1% tween. A DyLight 488 anti-rat polyclonal antibody (**ab98386**) at 1/250 dilution

was used as the secondary antibody. Nuclei were counterstained with DAPI and are shown in blue.

Please note: All products are "FOR RESEARCH USE ONLY. NOT FOR USE IN DIAGNOSTIC PROCEDURES, NOT FOR USE IN HUMANS"

Our Abpromise to you: Quality guaranteed and expert technical support

- Replacement or refund for products not performing as stated on the datasheet
- Valid for 12 months from date of delivery
- Response to your inquiry within 24 hours
- We provide support in Chinese, English, French, German, Japanese and Spanish
- Extensive multi-media technical resources to help you
- We investigate all quality concerns to ensure our products perform to the highest standards

If the product does not perform as described on this datasheet, we will offer a refund or replacement. For full details of the Abpromise, please visit <https://www.abcam.co.jp/abpromise> or contact our technical team.

Terms and conditions

- Guarantee only valid for products bought direct from Abcam or one of our authorized distributors
- Abcam biochemicals are novel compounds and we have not tested their biological activity in house. Please use the literature to identify how to use these products effectively. If you require further assistance please contact the scientific support team