

(S)-3,5-DHPG, group I mGlu agonist ab120007

29 References 画像数 2

製品の概要

製品名 (S)-3,5-DHPG, group I mGlu agonist

製品の詳細 Selective group I mGlu agonist

生理活性の詳細 Selective group I mGlu agonist.

Also available in simple stock solutions ([ab144484](#)) - add 1 ml of water to get an exact, ready-to-use concentration.

CAS 番号 162870-29-3



製品の特性

体系名 (S)-3,5-Dihydroxyphenylglycine

分子量 183.16

分子式 C₈H₉NO₄

PubChem 登録番号 443586

保存方法 Store at -20°C. Store In the Dark. Store under desiccating conditions. This product is air and light sensitive and impurities can occur as a result of air oxidation or due to metabolism by microbes.

溶解性 Soluble in water to 50 mM

使用に関する注意 This compound is also unstable in alkaline solution when it rapidly forms a brown colouration it is therefore recommended that alkaline is not used to dissolve this compound.

We recommend stock solutions are made up in water, aliquoted immediately and stored at -20°C. They should be used within one week.

Refer to SDS for further information.

Need more advice on solubility, usage and handling? Please visit our [frequently asked questions \(FAQ\) page](#) for more details.

SMILES 線形表記 Oc1cc(cc(O)c1)[C@H](N)C(=O)O

アプリケーション

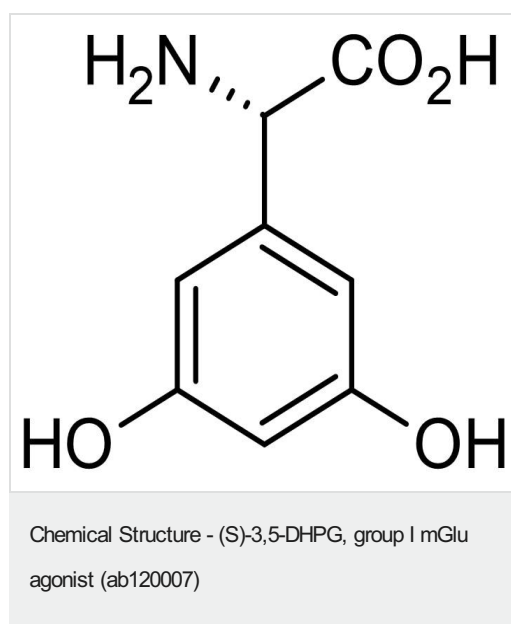
The Abpromise guarantee

Abpromise保証は、次のテスト済みアプリケーションにおけるab120007の使用に適用されます

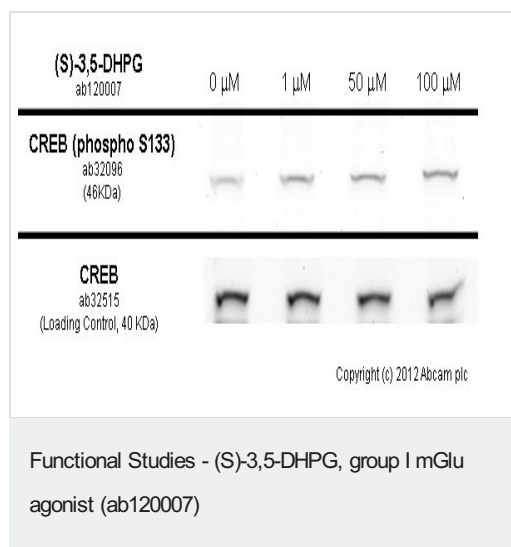
アプリケーションノートには、推奨の開始希釈率がありますが、適切な希釈率につきましてはご検討ください。

アプリケーション	Abreviews	特記事項
Functional Studies		Use at an assay dependent concentration.

画像



2D chemical structure image of ab120007, (S)-3,5-DHPG, group I mGlu agonist



SK-N-SH cells were incubated at 37°C for 30 minutes with vehicle control (0 μM) and different concentrations of (S)-3,5-DHPG (ab120007). Increased expression of CREB (phospho S133) in SK-N-SH cells correlates with an increase (S)-3,5-DHPG concentration, as described in literature.

Whole cell lysates were prepared with RIPA buffer (containing protease inhibitors and sodium orthovanadate), 20 μg of each were loaded on the gel and the WB was run under reducing conditions. After transfer the membrane was blocked for an hour using 3% milk before being incubated with **ab32096** at 1/500 dilution and **ab32515** at 1 μg/ml overnight at 4°C. Antibody binding was detected using an anti-rabbit antibody conjugated to HRP (**ab97051**) at 1/10000 dilution and visualised using ECL development solution.

Please note: All products are "FOR RESEARCH USE ONLY. NOT FOR USE IN DIAGNOSTIC PROCEDURES, NOT FOR USE IN HUMANS"

Our Abpromise to you: Quality guaranteed and expert technical support

- Replacement or refund for products not performing as stated on the datasheet
- Valid for 12 months from date of delivery
- Response to your inquiry within 24 hours
- We provide support in Chinese, English, French, German, Japanese and Spanish
- Extensive multi-media technical resources to help you
- We investigate all quality concerns to ensure our products perform to the highest standards

If the product does not perform as described on this datasheet, we will offer a refund or replacement. For full details of the Abpromise, please visit <https://www.abcam.co.jp/abpromise> or contact our technical team.

Terms and conditions

- Guarantee only valid for products bought direct from Abcam or one of our authorized distributors
- Abcam biochemicals are novel compounds and we have not tested their biological activity in house. Please use the literature to identify how to use these products effectively. If you require further assistance please contact the scientific support team