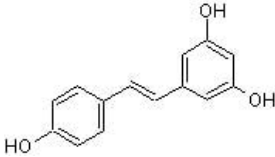


Resveratrol, Antioxidant polyphenol ab120726

8 References [画像数 2](#)

製品の概要

製品名	Resveratrol, Antioxidant polyphenol
製品の詳細	Antioxidant polyphenol with a multitude of biological activities
生理活性の詳細	Polyphenol found in grape skins and red wine. Displays a multitude of biological activities including antioxidant, antiplatelet, antitumor, anti-inflammatory and cardioprotective effects. Additionally, shows antiamyloidogenic and fibril-destabilizing activities.
精製度	> 99%
CAS 番号	501-36-0
構造式	

製品の特性

体系名	5-[(1 <i>E</i>)-2-(4-Hydroxyphenyl)ethenyl]-1,3,benzenediol
分子量	228.25
分子式	C ₁₄ H ₁₂ O ₃
PubChem 登録番号	445154
保存方法	Store at +4°C. Store under desiccating conditions. The product can be stored for up to 12 months.
溶解性	Soluble in DMSO to 100 mM and in ethanol to 100 mM
使用に関する注意	<p>Wherever possible, you should prepare and use solutions on the same day. However, if you need to make up stock solutions in advance, we recommend that you store the solution as aliquots in tightly sealed vials at -20°C. Generally, these will be useable for up to one month. Before use, and prior to opening the vial we recommend that you allow your product to equilibrate to room temperature for at least 1 hour.</p> <p>Refer to SDS for further information</p> <p>Need more advice on solubility, usage and handling? Please visit our frequently asked questions (FAQ) page for more details.</p>
SMILES 線形表記	C1=CC(=CC=C1/C=C/C2=CC(=CC(=C2)O)O)O

由来

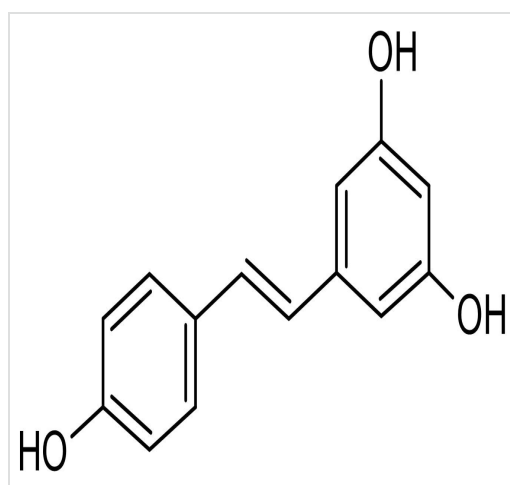
Synthetic

アプリケーション

The Abpromise guarantee Abpromise保証は、次のテスト済みアプリケーションにおけるab120726の使用に適用されます
アプリケーションノートには、推奨の開始希釈率がありますが、適切な希釈率につきましてはご検討ください。

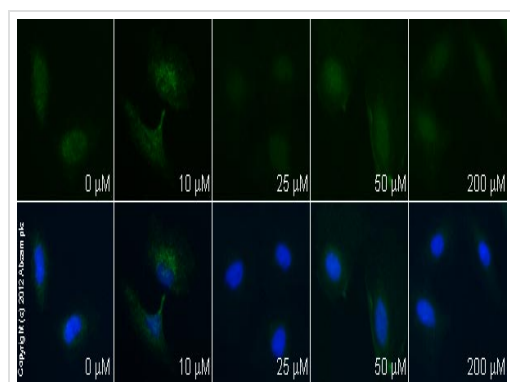
アプリケーション	Abreviews	特記事項
Functional Studies		Use at an assay dependent concentration.

画像



Chemical Structure - Resveratrol, Antioxidant polyphenol (ab120726)

2D chemical structure image of ab120726, Resveratrol, Antioxidant polyphenol



Immunocytochemistry/ Immunofluorescence - Resveratrol, Antioxidant polyphenol (ab120726)

ab85555 staining PKM2 in HeLa cells treated with resveratrol (ab120726), by ICC/IF. Decrease in PKM2 expression correlates with increased concentration of resveratrol as described in literature.

The cells were incubated at 37°C for 48h in media containing different concentrations of ab120726 (resveratrol) in DMSO, fixed with 4% formaldehyde for 10 minutes at room temperature and blocked with PBS containing 10% goat serum, 0.3 M glycine, 1% BSA and 0.1% tween for 2h at room temperature. Staining of the treated cells with **ab85555** (5 μg/ml) was performed overnight at 4°C in PBS containing 1% BSA and 0.1% tween. A DyLight 488 goat anti-rabbit polyclonal antibody (**ab96899**) at 1/250 dilution was used as the secondary antibody. Nuclei were counterstained with DAPI and are shown in blue.

Please note: All products are "FOR RESEARCH USE ONLY. NOT FOR USE IN DIAGNOSTIC PROCEDURES, NOT FOR USE IN HUMANS"

Our Abpromise to you: Quality guaranteed and expert technical support

- Replacement or refund for products not performing as stated on the datasheet
- Valid for 12 months from date of delivery
- Response to your inquiry within 24 hours

- We provide support in Chinese, English, French, German, Japanese and Spanish
- Extensive multi-media technical resources to help you
- We investigate all quality concerns to ensure our products perform to the highest standards

If the product does not perform as described on this datasheet, we will offer a refund or replacement. For full details of the Abpromise, please visit <https://www.abcam.co.jp/abpromise> or contact our technical team.

Terms and conditions

- Guarantee only valid for products bought direct from Abcam or one of our authorized distributors
- Abcam biochemicals are novel compounds and we have not tested their biological activity in house. Please use the literature to identify how to use these products effectively. If you require further assistance please contact the scientific support team