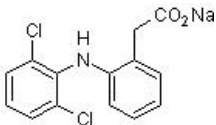


# Diclofenac sodium salt, cyclo-oxygenase inhibitor ab120621

**1 References** [画像数 2](#)

### 製品の概要

製品名	Diclofenac sodium salt, cyclo-oxygenase inhibitor
製品の詳細	Potent cyclo-oxygenase inhibitor
生理活性の詳細	Potent non-selective COX inhibitor (IC <sub>50</sub> values are 75 and 29 nM at COX-1 and COX-2, respectively). Potent inhibitor of phospholipase A <sub>2</sub> <i>in vitro</i> and <i>in vivo</i> . Activates the nitric oxide-cyclic GMP-potassium channel pathway. Shows anti-inflammatory, antipyretic and analgesic effects.
CAS 番号	15307-79-6
構造式	

### 製品の特性

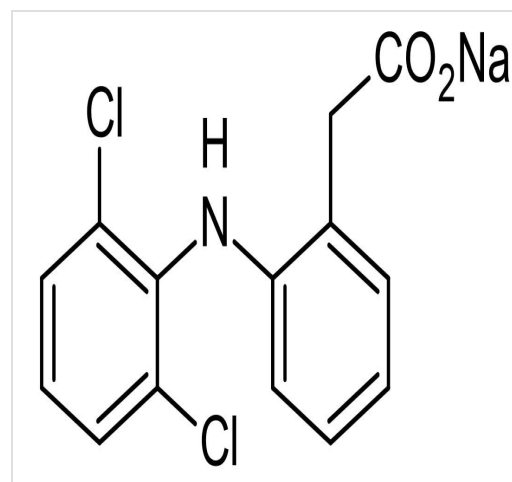
体系名	2-[(2,6-Dichlorophenyl)amino]benzeneacetic acid sodium salt
分子量	318.13
分子式	C <sub>14</sub> H <sub>10</sub> Cl <sub>2</sub> NNaO <sub>2</sub>
保存方法	Store at Room Temperature. Store under desiccating conditions. The product can be stored for up to 12 months.
溶解性	Soluble in water to 50 mM (at room temperature) and in water to 100 mM (with warming)
使用に関する注意	<p>Wherever possible, you should prepare and use solutions on the same day. However, if you need to make up stock solutions in advance, we recommend that you store the solution as aliquots in tightly sealed vials at -20°C. Generally, these will be useable for up to one month. Before use, and prior to opening the vial we recommend that you allow your product to equilibrate to room temperature for at least 1 hour.</p> <p>Toxic, refer to SDS for further information.</p> <p>Need more advice on solubility, usage and handling? Please visit our <a href="#">frequently asked questions (FAQ) page</a> for more details.</p>
由来	Synthetic

## アプリケーション

**The Abpromise guarantee** Abpromise保証は、 次のテスト済みアプリケーションにおけるab120621の使用に適用されます  
アプリケーションノートには、推奨の開始希釈率がありますが、適切な希釈率につきましてはご検討ください。

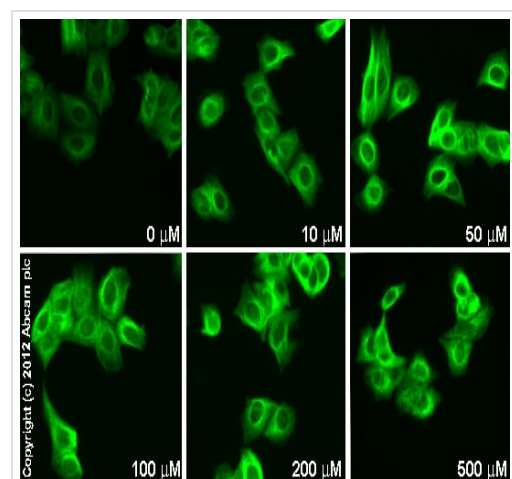
アプリケーション	Abreviews	特記事項
Functional Studies		Use at an assay dependent concentration.

## 画像



Chemical Structure - Diclofenac sodium salt, cyclo-oxygenase inhibitor (ab120621)

2D chemical structure image of ab120621, Diclofenac sodium salt, cyclo-oxygenase inhibitor



Immunocytochemistry/ Immunofluorescence -  
Diclofenac sodium salt, cyclo-oxygenase inhibitor  
(ab120621)

**ab96732** staining Prostaglandin dehydrogenase 1 in MCF7 cells treated with diclofenac sodium salt (ab120621), by ICC/IF. Increase in Prostaglandin dehydrogenase 1 expression correlates with increased concentration of diclofenac sodium salt as described in literature.

The cells were incubated at 37°C for 6h in media containing different concentrations of ab120621 (diclofenac sodium salt) in DMSO, fixed with 4% formaldehyde for 10 minutes at room temperature and blocked with PBS containing 10% goat serum, 0.3 M glycine, 1% BSA and 0.1% tween for 2h at room temperature. Staining of the treated cells with **ab96732** (1 μg/ml) was performed overnight at 4°C in PBS containing 1% BSA and 0.1% tween. A DyLight 488 goat anti-rabbit polyclonal antibody (**ab96899**) at 1/250 dilution was used as the secondary antibody.

**Please note:** All products are "FOR RESEARCH USE ONLY. NOT FOR USE IN DIAGNOSTIC PROCEDURES, NOT FOR USE IN HUMANS"

## **Our Abpromise to you: Quality guaranteed and expert technical support**

---

- Replacement or refund for products not performing as stated on the datasheet
- Valid for 12 months from date of delivery
- Response to your inquiry within 24 hours
  
- We provide support in Chinese, English, French, German, Japanese and Spanish
- Extensive multi-media technical resources to help you
- We investigate all quality concerns to ensure our products perform to the highest standards

If the product does not perform as described on this datasheet, we will offer a refund or replacement. For full details of the Abpromise, please visit <https://www.abcam.co.jp/abpromise> or contact our technical team.

## **Terms and conditions**

---

- Guarantee only valid for products bought direct from Abcam or one of our authorized distributors
- Abcam biochemicals are novel compounds and we have not tested their biological activity in house. Please use the literature to identify how to use these products effectively. If you require further assistance please contact the scientific support team