

### Compound 55, DOT1L Inhibitor, DOT1L inhibitor ab145525

画像数 1

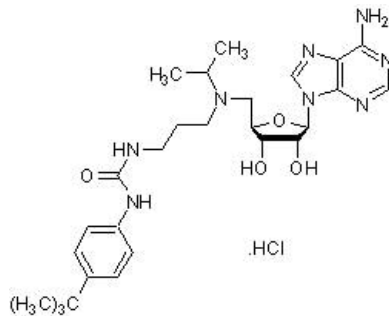
#### 製品の概要

製品名	Compound 55, DOT1L Inhibitor, DOT1L inhibitor
製品の詳細	Highly potent, selective DOT1L inhibitor
生理活性の詳細	Highly potent, selective DOT1L inhibitor ( $K_i = 0.46$ nM). Shows antiproliferative effects ( $EC_{50}$ values are 4.4, 8.1 and 10 $\mu$ M for MV4-11, THP1 and NB4 leukemia cells, respectively). Binds to the DOT1L:nucleosome complex ( $K_d = 66$ nM). Competes with SAM/SAH, but not the substrate nucleosome, on binding to DOT1L.

精製度 > 98%

CAS 番号 1381761-52-9

構造式



#### 製品の特性

体系名	5'-Deoxy-5'-[[3-[[[4-(1,1-dimethylethyl)phenyl]amino]carbonyl]amino]propyl]-(1-methylethyl)amino]adenosine hydrochloride
分子量	577.13
分子式	$C_{27}H_{40}N_8O_4 \cdot HCl$
保存方法	Store at $-20^{\circ}C$ . Store under desiccating conditions. The product can be stored for up to 12 months.
溶解性	Soluble in water to 50 mM
使用に関する注意	Wherever possible, you should prepare and use solutions on the same day. However, if you need to make up stock solutions in advance, we recommend that you store the solution as aliquots in tightly sealed vials at $-20^{\circ}C$ . Generally, these will be useable for up to one month. Before use, and prior to opening the vial we recommend that you allow your product to equilibrate to room temperature for at least 1 hour.

Need more advice on solubility, usage and handling? Please visit our [frequently asked questions \(FAQ\) page](#) for more details.

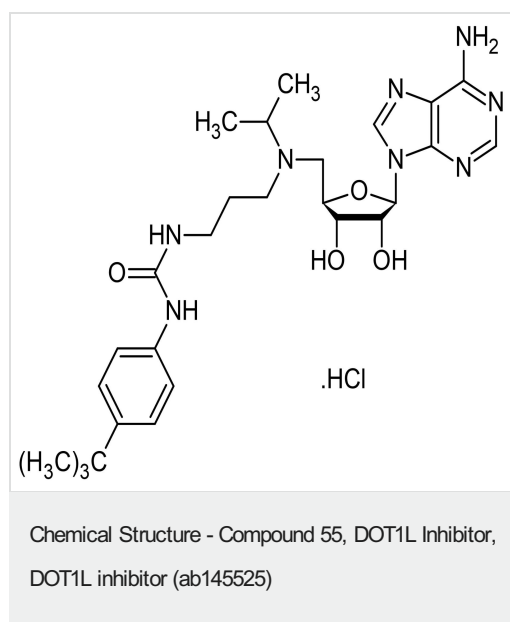
#### SMILES 線形表記

```
Cl.CC(C)(C)c1ccc(cc1)NC(=O)NCCCN(C[C@H]4O[C@@H](n3cnc2c(N)ncnc23)C(O)[C@H]4O)C(C)C
```

#### 由来

Synthetic

#### 画像



2D chemical structure image of ab145525, Compound 55, DOT1L Inhibitor, DOT1L inhibitor

**Please note:** All products are "FOR RESEARCH USE ONLY. NOT FOR USE IN DIAGNOSTIC PROCEDURES, NOT FOR USE IN HUMANS"

#### Our Abpromise to you: Quality guaranteed and expert technical support

- Replacement or refund for products not performing as stated on the datasheet
- Valid for 12 months from date of delivery
- Response to your inquiry within 24 hours
- We provide support in Chinese, English, French, German, Japanese and Spanish
- Extensive multi-media technical resources to help you
- We investigate all quality concerns to ensure our products perform to the highest standards

If the product does not perform as described on this datasheet, we will offer a refund or replacement. For full details of the Abpromise, please visit <https://www.abcam.co.jp/abpromise> or contact our technical team.

#### Terms and conditions

- Guarantee only valid for products bought direct from Abcam or one of our authorized distributors
- Abcam biochemicals are novel compounds and we have not tested their biological activity in house. Please use the literature to identify how to use these products effectively. If you require further assistance please contact the scientific support team