

BAPTA-AM, Ca²⁺ chelator ab120503

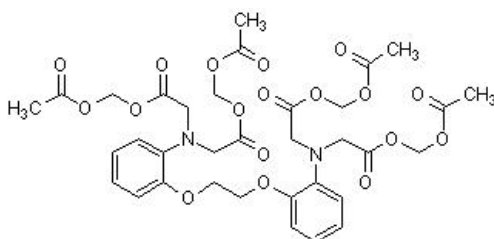
28 References **画像数 2**

製品の概要

製品名	BAPTA-AM, Ca ²⁺ chelator
製品の詳細	Selective Ca ²⁺ chelator. Analog of BAPTA.
生理活性の詳細	Selective Ca ²⁺ chelator. Cell-permeable analog of BAPTA (ab120449). Useful for manipulation of intracellular free Ca ²⁺ levels. Shows varied biological activity. Blocks hK _v 1.5, K _v 11.1 (hERG) and hK _v 1.3 channels (K _i values are 1.23, 1.30 and 1.45 μM, respectively).

CAS 番号 126150-97-8

構造式



製品の特性

体系名	1,2-Bis(2-aminophenoxy)ethane- <i>N,N,N',N'</i> -tetraacetic acid tetrakis(acetoxymethyl ester)
分子量	764.68
分子式	C ₃₄ H ₄₀ N ₂ O ₁₈
PubChem 登録番号	2293
保存方法	Store at -20°C. Store under desiccating conditions. The product can be stored for up to 12 months.
溶解性	Soluble in DMSO to 100 mM
使用に関する注意	<p>Wherever possible, you should prepare and use solutions on the same day. However, if you need to make up stock solutions in advance, we recommend that you store the solution as aliquots in tightly sealed vials at -20°C. Generally, these will be useable for up to one month. Before use, and prior to opening the vial we recommend that you allow your product to equilibrate to room temperature for at least 1 hour.</p> <p>Refer to SDS for further information.</p> <p>For more information on AM esters please visit our AM esters FAQ page.</p>

Need more advice on solubility, usage and handling? Please visit our [frequently asked questions \(FAQ\) page](#) for more details.

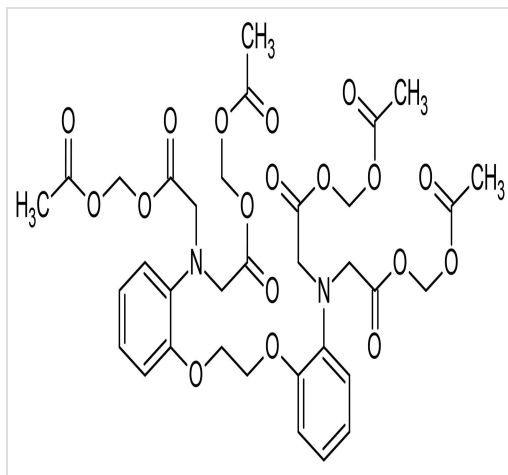
SMILES 線形表記

CC(=O)OCOC(=O)CN(CC(=O)OCOC(=O)C)C1=CC=CC=C1OCCOC2=CC=CC=C2N(CC(=O)OCOC(=O)C)CC(=O)OCOC(=O)C

由来

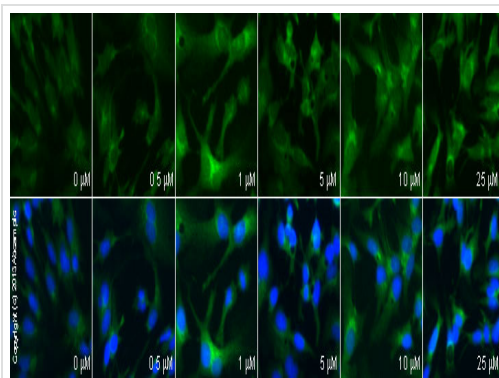
Synthetic

画像



2D chemical structure image of ab120503, BAPTA-AM, Ca²⁺ chelator

Chemical Structure - BAPTA-AM, Ca²⁺ chelator
(ab120503)



Immunocytochemistry/ Immunofluorescence -
BAPTA-AM, Ca²⁺ chelator (ab120503)

ab66705 staining PAI1 in HepG2 cells treated with BAPTA-AM (ab120503), by ICC/IF. Increase in PAI1 expression correlates with increased concentration of BAPTA-AM, as described in literature. The cells were incubated at 37°C for 4 hours in media containing different concentrations of ab120503 (BAPTA-AM) in DMSO, fixed with 100% methanol for 5 minutes at -20°C and blocked with PBS containing 10% goat serum, 0.3 M glycine, 1% BSA and 0.1% tween for 2h at room temperature. Staining of the treated cells with **ab66705** (5 μg/ml) was performed overnight at 4°C in PBS containing 1% BSA and 0.1% tween. A DyLight 488 goat anti-rabbit polyclonal antibody (**ab96899**) at 1/250 dilution was used as the secondary antibody. Nuclei were counterstained with DAPI and are shown in blue.

Please note: All products are "FOR RESEARCH USE ONLY. NOT FOR USE IN DIAGNOSTIC PROCEDURES, NOT FOR USE IN HUMANS"

Our Abpromise to you: Quality guaranteed and expert technical support

- Replacement or refund for products not performing as stated on the datasheet
- Valid for 12 months from date of delivery

- Response to your inquiry within 24 hours
- We provide support in Chinese, English, French, German, Japanese and Spanish
- Extensive multi-media technical resources to help you
- We investigate all quality concerns to ensure our products perform to the highest standards

If the product does not perform as described on this datasheet, we will offer a refund or replacement. For full details of the Abpromise, please visit <https://www.abcam.co.jp/abpromise> or contact our technical team.

Terms and conditions

- Guarantee only valid for products bought direct from Abcam or one of our authorized distributors
- Abcam biochemicals are novel compounds and we have not tested their biological activity in house. Please use the literature to identify how to use these products effectively. If you require further assistance please contact the scientific support team