

ATP-gamma-S, Kinase substrate ab138911

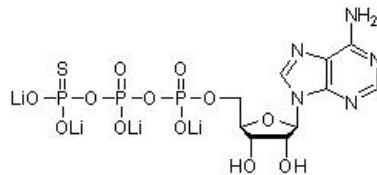
[26 References](#) [画像数 1](#)

製品の概要

製品名	ATP-gamma-S, Kinase substrate
製品の詳細	Kinase substrate
特記事項	<p>Kinase reaction reagent to be used with ab92570 rabbit monoclonal to thiophosphate ester for the identification of direct kinase substrates as mentioned in Allen JJ <i>et al.</i> Nat Methods 4:511-6 (2007).</p> <p>After the kinase of interest has accepted ATP-γ-S, <i>p</i>-Nitrobenzyl mesylate (ab138910) can be used to alkylate the thiophosphorylation site on the substrates. A thiophosphate ester rabbit monoclonal antibody (ab92570) is introduced to identify the tagged substrates.</p> <p>For western blot analysis, we used ATPγS or A*TPγS analogs at a concentration of 1 mM. For kinetic measurements, ATPγS or A*TPγS analog concentration varied from 0.1 μM to 250 μM. See Allen JJ <i>et al.</i> Nat Methods 4:511-6 (2007); Supp. Material.</p>

CAS 番号 93839-89-5

構造式



製品の特性

体系名	Adenosine 5'-(3-thiotriphosphate) tetralithium salt
分子量	546.98
分子式	C ₁₀ H ₁₂ Li ₄ N ₅ O ₁₂ P ₃ S
PubChem 登録番号	5311341
保存方法	Store at -20°C. Store under desiccating conditions. The product can be stored for up to 12 months.
溶解性	Soluble in water to 10 mM
使用に関する注意	This product is supplied in one (or more) pack size which is freeze dried. Therefore the contents may not be readily visible, as they can coat the bottom or walls of the vial. Please see our FAQs

and [information page](#) for more details on handling.

Unstable; make up solutions fresh and use immediately.

Refer to SDS for further information.

Need more advice on solubility, usage and handling? Please visit our [frequently asked questions \(FAQ\) page](#) for more details.

SMILES 線形表記

```
[Li+].[Li+].[Li+].[Li+].C1=NC2=C(C(=N1)N)N=CN2[C@H]3[C@@H]([C@@H]([C@H](O3)COP(=O)([O-])OP(=O)([O-])OP(=S)([O-])[O-])O)O
```

由来

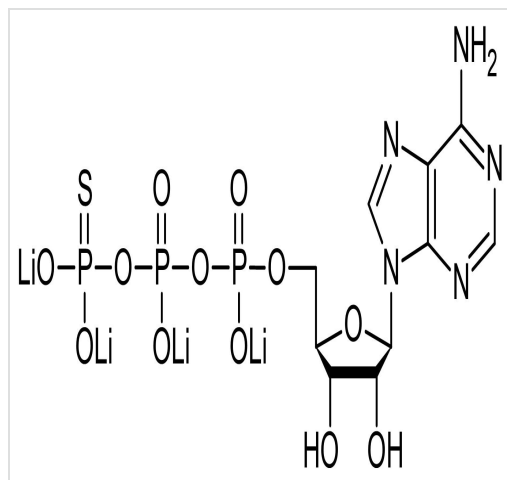
Synthetic

アプリケーション

The Abpromise guarantee [Abpromise保証は](#)、次のテスト済みアプリケーションにおけるab138911の使用に適用されます
アプリケーションノートには、推奨の開始希釈率がありますが、適切な希釈率につきましてはご検討ください。

アプリケーション	Abreviews	特記事項
Functional Studies		Use at an assay dependent concentration.

画像



2D chemical structure image of ab138911, ATP-gamma-S, Kinase substrate

Chemical Structure - ATP-gamma-S, Kinase substrate (ab138911)

Please note: All products are "FOR RESEARCH USE ONLY. NOT FOR USE IN DIAGNOSTIC PROCEDURES, NOT FOR USE IN HUMANS"

Our Abpromise to you: Quality guaranteed and expert technical support

- Replacement or refund for products not performing as stated on the datasheet
- Valid for 12 months from date of delivery
- Response to your inquiry within 24 hours

- We provide support in Chinese, English, French, German, Japanese and Spanish
- Extensive multi-media technical resources to help you
- We investigate all quality concerns to ensure our products perform to the highest standards

If the product does not perform as described on this datasheet, we will offer a refund or replacement. For full details of the Abpromise, please visit <https://www.abcam.co.jp/abpromise> or contact our technical team.

Terms and conditions

- Guarantee only valid for products bought direct from Abcam or one of our authorized distributors
- Abcam biochemicals are novel compounds and we have not tested their biological activity in house. Please use the literature to identify how to use these products effectively. If you require further assistance please contact the scientific support team