

Trypsin Activity Assay Kit (Colorimetric) ab102531

13 References 画像数 4

製品の概要

製品名	Trypsin Activity Assay Kit (Colorimetric)
検出方法	Colorimetric
サンプルの種類	Cell culture supernatant, Urine, Serum, Plasma, Other biological fluids, Tissue Extracts
アッセイタイプ	Enzyme activity
全工程の試験時間	2h 00m
種交差性	交差種: Mammals
製品の概要	<p>Trypsin Activity Assay Kit (Colorimetric) ab102531 is simple and fast assay to quantify trypsin activity.</p> <p>In the trypsin activity assay protocol, trypsin cleaves a substrate to generate p-nitroaniline (p-NA) which is detected at OD = 405 nm. Since the color intensity is proportional to p-NA content, trypsin activity can be accurately measured.</p> <p>Trypsin activity assay protocol summary:</p> <ul style="list-style-type: none">- add samples, positive control and standards to wells- add chymotrypsin inhibitor to sample and positive control wells and incubate for 10 min at room temp- add reaction mix- analyze every 2-3 min for 1-2 hr with microplate reader in kinetic mode at 25°C
特記事項	<p>This product is manufactured by BioVision, an Abcam company and was previously called K771 Trypsin Activity Colorimetric Assay Kit. K771-100 is the same size as the 100 test size of ab102531.</p>
試験プラットフォーム	Microplate reader

製品の特性

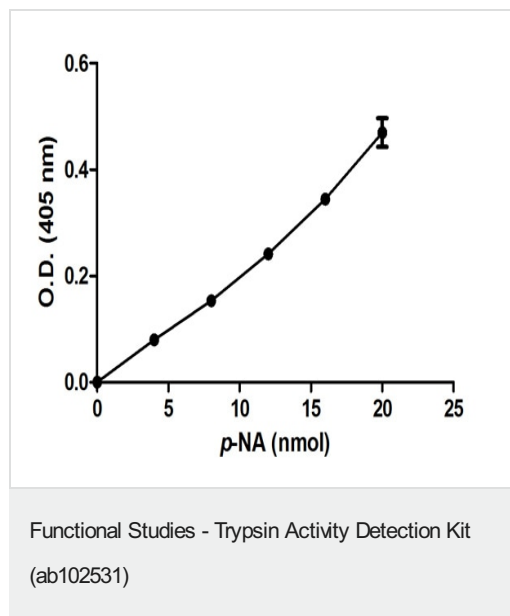
保存方法 Store at -20°C. Please refer to protocols.

内容	100 tests	2000 tests
Assay Buffer I	1 x 25ml	20 x 25ml

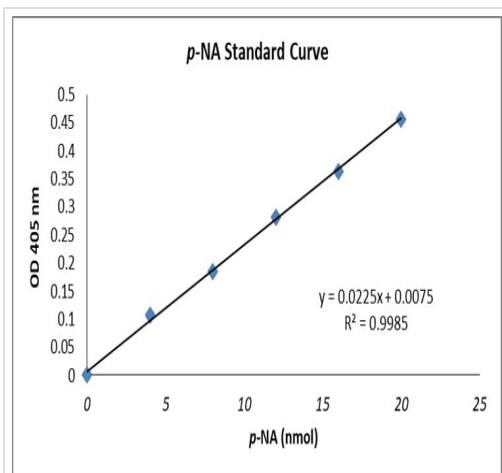
内容	100 tests	2000 tests
Chymotrypsin Inhibitor II	1 x 100 units	20 x 100 units
pNA Standard II	1 x 400μl	20 x 400μl
Trypsin Inhibitor	1 x 100μl	20 x 100μl
Trypsin Positive Control	1 vial	20 vials
Trypsin Substrate	1 x 200μl	20 x 200μl

機能	Has activity against the synthetic substrates Boc-Phe-Ser-Arg-Mec, Boc-Leu-Thr-Arg-Mec, Boc-Gln-Ala-Arg-Mec and Boc-Val-Pro-Arg-Mec. The single-chain form is more active than the two-chain form against all of these substrates.
関連疾患	Defects in PRSS1 are a cause of hereditary pancreatitis (HPC) [MIM:167800]; also known as chronic pancreatitis (CP). HPC is an autosomal dominant disease characterized by the presence of calculi in pancreatic ducts. It causes severe abdominal pain attacks.
配列類似性	Belongs to the peptidase S1 family. Contains 1 peptidase S1 domain.
翻訳後修飾	Occurs in a single-chain form and a two-chain form, produced by proteolytic cleavage after Arg-122.
細胞内局在	Secreted > extracellular space.

画像

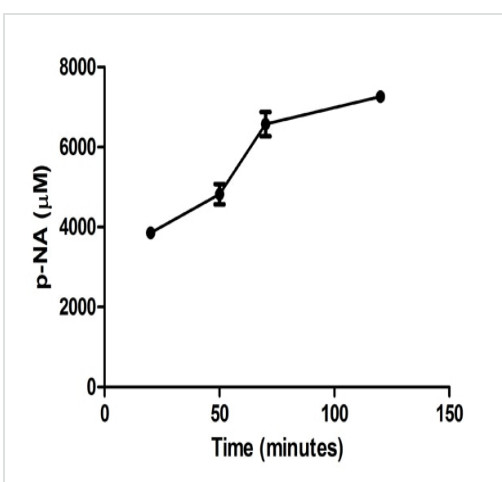


p-NA standard curve measured in duplicates ((+/- SD), background subtracted) after 60 minutes incubation.



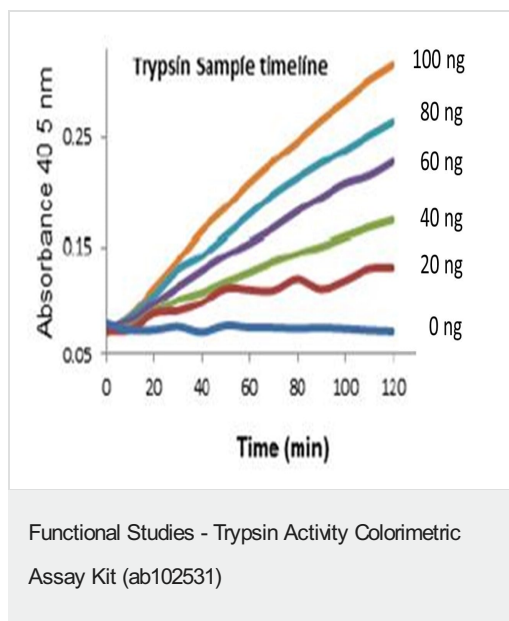
Example of standard curve obtained using ab102531, following assay protocol. The curve should be used as guideline only.

Functional Studies - Trypsin Activity Detection Kit
(ab102531)



Trypsin levels were kinetically measured in commercially purchased trypsin (1x); background signal subtracted (duplicates \pm SD).

Functional Studies - Trypsin Activity Detection Kit
(ab102531)



Example of Trypsin sample timeline obtained using ab102531

Please note: All products are "FOR RESEARCH USE ONLY. NOT FOR USE IN DIAGNOSTIC PROCEDURES"

Our Abpromise to you: Quality guaranteed and expert technical support

- Replacement or refund for products not performing as stated on the datasheet
- Valid for 12 months from date of delivery
- Response to your inquiry within 24 hours
- We provide support in Chinese, English, French, German, Japanese and Spanish
- Extensive multi-media technical resources to help you
- We investigate all quality concerns to ensure our products perform to the highest standards

If the product does not perform as described on this datasheet, we will offer a refund or replacement. For full details of the Abpromise, please visit <https://www.abcam.co.jp/abpromise> or contact our technical team.

Terms and conditions

- Guarantee only valid for products bought direct from Abcam or one of our authorized distributors