

#### 4 References 画像数 1

## 製品の概要

製品名	Lysosomal Staining Kit - Red Fluorescence - Cytopainter
サンプルの種類	Adherent cells, Suspension cells
アッセイタイプ	Cell-based
製品の概要	<p>Abcam's fluorescence imaging kits are a set of fluorescence imaging tools for labeling sub-cellular organelles such as lysosomes, mitochondria, and actin filaments in live cells. The selective staining of cell compartments provides a powerful method for studying cellular events in a spatial and temporal context.</p> <p>ab112137 is designed to label lysosomes in live cells with red fluorescence at Ex/Em = 575/600 nm. The kit uses a proprietary lysotropic dye that selectively accumulates in lysosomes probably via the lysosome pH gradient. The lysotropic indicator is a hydrophobic compound that easily permeates intact live cells, and becomes trapped inside lysosomes after it gets into cells. Its fluorescence is strongly enhanced upon entering lysosomes. This key feature significantly reduces its staining background. The labeling protocol is robust, requiring minimal hands-on time. ab112137 can be readily adapted for many types of fluorescence platforms such as microplate assays, flow cytometry and fluorescence microscope. It is useful for a variety of studies, including cell adhesion, chemotaxis, multidrug resistance, cell viability, apoptosis and cytotoxicity. The kit provides all the essential components and it can be used for both proliferating and non-proliferating cells (either suspension or adherent cells).</p> <p>Review other dyes and kits for <a href="#">lysosomal staining</a>, or the <a href="#">live cell staining fluorescent dyes guide</a></p>
試験プラットフォーム	Fluorescence microscope

## 製品特性

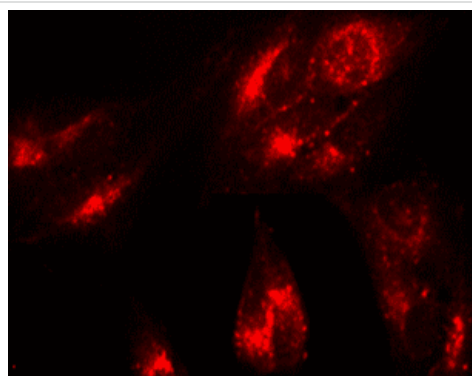
保存方法

Store at -20°C. Please refer to protocols.

内容	500 tests
Live Cell Staining Buffer	1 x 50ml

内容	500 tests
LysoRed Indicator	1 x 100µl

## 画像



Fluorescence Microscopy - Lysosomal Staining Kit -  
Red Fluorescence (ab112137)

ab112137 staining U2OS cells by Fluorescence microscopy (in a black 96 well plate). Incubation time is 20 min to 1 hour and exposure time 20 ms to 100 ms.

**Please note:** All products are "FOR RESEARCH USE ONLY. NOT FOR USE IN DIAGNOSTIC PROCEDURES"

## Our Abpromise to you: Quality guaranteed and expert technical support

- Replacement or refund for products not performing as stated on the datasheet
- Valid for 12 months from date of delivery
- Response to your inquiry within 24 hours
- We provide support in Chinese, English, French, German, Japanese and Spanish
- Extensive multi-media technical resources to help you
- We investigate all quality concerns to ensure our products perform to the highest standards

If the product does not perform as described on this datasheet, we will offer a refund or replacement. For full details of the Abpromise, please visit <https://www.abcam.co.jp/abpromise> or contact our technical team.

## Terms and conditions

- Guarantee only valid for products bought direct from Abcam or one of our authorized distributors