

Fixable Cell Viability Assay Kit (Fluorometric - Blue) - Cytopainter ab176741

画像数 2

製品の概要

製品名	Fixable Cell Viability Assay Kit (Fluorometric - Blue) - Cytopainter
検出方法	Fluorescent
サンプルの種類	Adherent cells, Suspension cells
アッセイタイプ	Cell-based (quantitative)
種交差性	交差種: Mammals, Other species
製品の概要	<p>Abcam's Fixable Cell Viability Assay Kit (Fluorometric - Blue) Cytopainter (ab176741) is used to evaluate the viability of mammalian cells by flow cytometry. The fluorescent dye provided in the kit is retained in cells by reacting with cellular components. For viable cells, only the cell-surface amines are available to react with the dye while for the necrotic cells or the other cells with compromised membranes, the reactive dye reacts with cell surface amines and intracellular amines, resulting in more intense fluorescent staining. The difference in fluorescence intensity between the live and dead cell populations is ~100-500 folds and can be completely preserved after fixation.</p> <p>Fixable Cell Viability Assay Kit (Fluorometric - Blue) Cytopainter (ab176741) is designed to label cells at Ex/ Em =353/442 nm excited with a laser at 335 nm.</p>
特記事項	<p>Related assays</p> <p>Review the cell health assay guide to learn about kits to perform a cell viability assay, cytotoxicity assay and cell proliferation assay.</p>
試験プラットフォーム	Flow cytometer

製品の特性

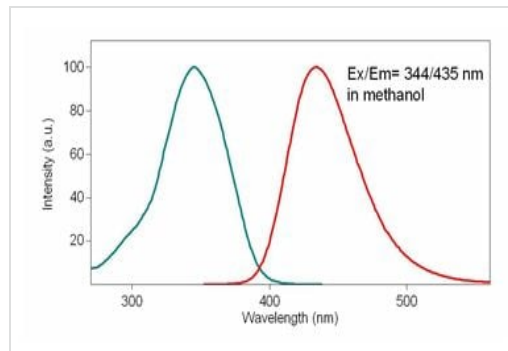
保存方法 Store at -20°C. Please refer to protocols.

内容	200 tests
DMSO	1 x 200µl
Tracking dye Blue	1 vial

関連性

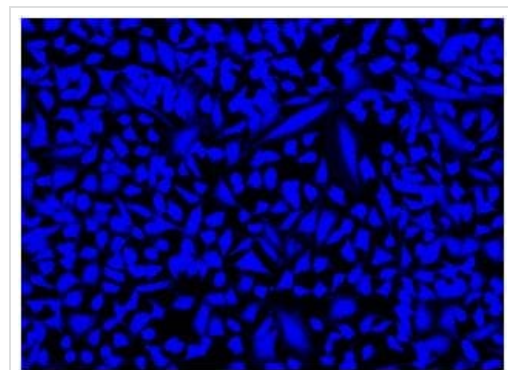
Cell viability is a determination of living or dead cells, based on a total cell population. Cell viability assess healthy cells in a sample, with no distinction between dividing or quiescent cells. An increase in cell viability indicates cell growth, while a decrease in viability can generally be interpreted as the result of either toxic effects of compounds/agents or suboptimal culture conditions.

画像



Spectrum for ab176741.

Excitation and Emission spectra for CytoPainter
Fixable Cell Viability Assay Kit (Fluorometric - Blue)
(ab176741)



Fluorescent analysis of HeLa cells fixed with formaldehyde and labeled with Abcam's CytoPainter Fixable Cell Viability Assay Kit (Fluorometric - Blue) in a Costar black walled/clear bottom 96-well plate.

HeLa cells stained with CytoPainter Fixable Cell
Viability Assay Kit (Fluorometric - Blue) (ab176741)

Please note: All products are "FOR RESEARCH USE ONLY. NOT FOR USE IN DIAGNOSTIC PROCEDURES"

Our Abpromise to you: Quality guaranteed and expert technical support

- Replacement or refund for products not performing as stated on the datasheet
- Valid for 12 months from date of delivery
- Response to your inquiry within 24 hours
- We provide support in Chinese, English, French, German, Japanese and Spanish
- Extensive multi-media technical resources to help you
- We investigate all quality concerns to ensure our products perform to the highest standards

If the product does not perform as described on this datasheet, we will offer a refund or replacement. For full details of the Abpromise, please visit <https://www.abcam.co.jp/abpromise> or contact our technical team.

Terms and conditions

- Guarantee only valid for products bought direct from Abcam or one of our authorized distributors