

Cytochrome c Release Assay Kit ab65311

★★★★★ [3 Abreviews](#) [48 References](#) [画像数 2](#)

製品の概要

| | |
|----------|--------------------------------------------------------------------------------------------------------------------------------------------------------------|
| 製品名 | Cytochrome c Release Assay Kit |
| サンプルの種類 | Tissue, Adherent cells, Suspension cells |
| アッセイタイプ | Direct |
| 全工程の試験時間 | 3h 00m |
| 種交差性 | 交差種: Mouse, Rat, Human |
| 製品の概要 | Cytochrome c Release Assay Kit ab65311 provides an effective means for detecting cytochrome c translocation from mitochondria into cytosol during apoptosis. |

The kit provides reagents to isolate a highly enriched mitochondria fraction from cytosol. The procedure is simple and easy to perform; no ultracentrifugation is required and no toxic chemicals are involved.

Cytochrome c release from mitochondria into the cytosol is determined by Western blotting using the cytochrome c antibody provided in the kit.

The anti-Cytochrome c antibody is a mouse monoclonal antibody that reacts with denatured human, mouse, and rat cytochrome c.

Cytochrome c release assay protocol summary:

- collect cells, centrifuge and wash with PBS
- resuspend in cytosol extraction buffer mix
- homogenize cells with a dounce tissue grinder
- centrifuge homogenate at 700 x g for 10 min
- collect supernatant and centrifuge at 10,000 g for 30 min, collect supernatant as cytosolic fraction
- resuspend pellet in mitochondrial extraction buffer mix and save as mitochondrial fraction
- analyze cytosolic and mitochondrial fractions in western blotting with cytochrome c antibody

特記事項

This product is manufactured by BioVision, an Abcam company and was previously called K257 Cytochrome c Releasing Apoptosis Assay Kit. K257-100 is the same size as the 100 test size of ab65311.

Cytochrome c plays an important role in apoptosis. The protein is located in the space between the inner and outer mitochondrial membranes. An apoptotic stimulus triggers the release of cytochrome c from the mitochondria into cytosol where it binds to Apaf-1. The cytochrome c/Apaf-

1 complex activates caspase-9, which then activates caspase-3 and other downstream caspases

Other apoptosis assays

For more apoptosis assays, review the [apoptosis assay and apoptosis marker guide](#).

製品の特徴

保存方法

Store at -20°C. Please refer to protocols.

| 内容 | 100 tests | 100 tests |
|----------------------------------|-----------|-----------|
| 5X Cytosol Extraction Buffer I | 1 x 20ml | 1 x 20ml |
| Anti-Mouse Cyt C Antibody | 1 x 100µl | 1 x 100µl |
| DTT II | 1 x 110µl | 1 x 110µl |
| Mitochondria Extraction Buffer I | 1 x 10ml | 1 x 10ml |
| Protease Inhibitor Cocktail I | 1 vial | 1 vial |

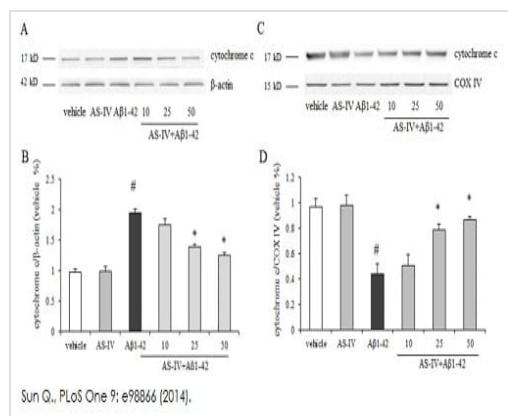
関連性

Cytochrome c plays an important role in apoptosis. The protein is located in the space between the inner and outer mitochondrial membranes. An apoptotic stimulus triggers the release of cytochrome c from the mitochondria into cytosol where it binds to Apaf-1. The cytochrome c/Apaf-1 complex activates caspase-9, which then activates caspase-3 and other downstream caspases.

細胞内局在

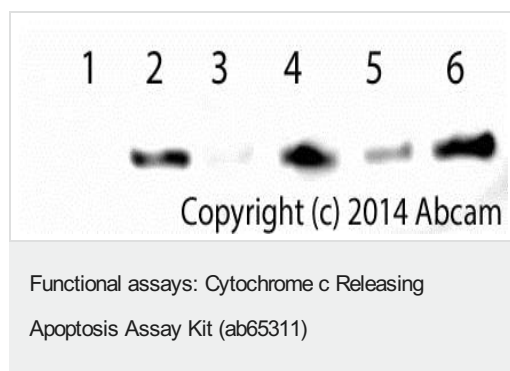
Mitochondrial

画像



Inhibition of cytochrome c release from mitochondria in SK-N-SH cells

Sun Q., PLoS One 9(6), Fig 4. doi: 10.1371/journal.pone.0098866. Reproduced under the Creative Commons license <http://creativecommons.org/licenses/by/4.0/>



5x10⁷ Jurkat cells were cultured in the absence (1-2) or presence of 2 uM Camptothecin (CPT) (**ab120115**) for 24 hours (3-4) or with 10 uM CPT for 4 hours (5-6). 30 uL cytosolic (1, 3, 5) and mitochondrial (2, 4, 6) extracts were loaded onto the gel.

Membranes were probed with anti-Cytochrome C Mouse MAb (ab65311) (dilution 1:200) followed by Goat Anti-Mouse IgG (HRP) (**ab97040**) (dilution 1:2000).

Bands were detected at the predicted size of 12 kDa.

Please note: All products are "FOR RESEARCH USE ONLY. NOT FOR USE IN DIAGNOSTIC PROCEDURES"

Our Abpromise to you: Quality guaranteed and expert technical support

- Replacement or refund for products not performing as stated on the datasheet
- Valid for 12 months from date of delivery
- Response to your inquiry within 24 hours
- We provide support in Chinese, English, French, German, Japanese and Spanish
- Extensive multi-media technical resources to help you
- We investigate all quality concerns to ensure our products perform to the highest standards

If the product does not perform as described on this datasheet, we will offer a refund or replacement. For full details of the Abpromise, please visit <https://www.abcam.co.jp/abpromise> or contact our technical team.

Terms and conditions

- Guarantee only valid for products bought direct from Abcam or one of our authorized distributors