

Creatine Kinase Activity Assay Kit (Colorimetric) ab155901

★★★★★ [2 Abreviews](#) [46 References](#) [画像数 4](#)

製品の概要

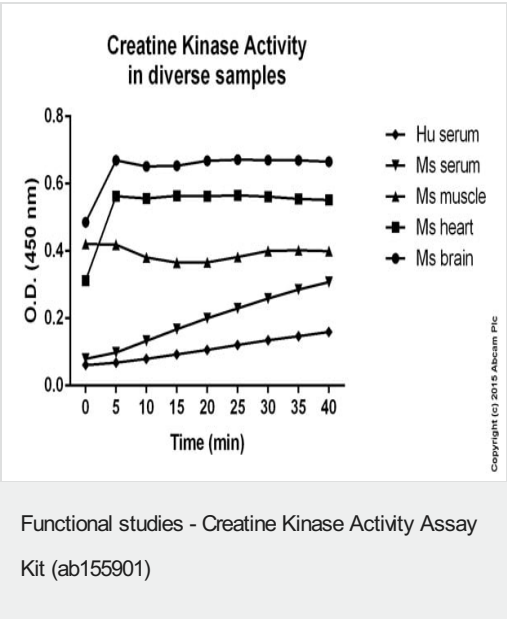
製品名	Creatine Kinase Activity Assay Kit (Colorimetric)
検出方法	Colorimetric
サンプルの種類	Serum, Plasma, Tissue, Adherent cells, Suspension cells, Tissue Homogenate
アッセイタイプ	Enzyme activity
検出感度	< 1 mU/well
検出範囲	2 nmol/well - 10 nmol/well
全工程の試験時間	1h 0m
種交差性	交差種: Mammals, Other species
製品の概要	<p>Creatine Kinase Activity Assay Kit (Colorimetric) ab155901 uses a high-throughput adaptable, simple and sensitive assay for creatine kinase (CK) activity.</p> <p>In the creatine kinase assay protocol, creatine kinase (CK) converts creatine into phosphocreatine and ADP. The phosphocreatine and ADP then react with the CK enzyme mix to form an intermediate, which reduces a colorless probe to a colored product with strong absorbance at $\lambda = 450$ nm.</p> <p>This assay kit can detect CK activity to less than 1 mU.</p> <p>Creatine kinase assay protocol summary:</p> <ul style="list-style-type: none"> - add samples and standards to wells - add reaction mix - analyze every 1-2 min for 10-40 min with microplate reader in kinetic mode at 37°C
特記事項	<p>This product is manufactured by BioVision, an Abcam company and was previously called K777 Creatine Kinase (CK) Activity Colorimetric Assay Kit. K777-100 is the same size as the 100 test size of ab155901.</p> <p>Creatine Kinase (CK) also known as creatine phosphokinase (CPK) and ATP: creatine N-phosphotransferase is a common cellular enzyme (EC 2.7.3.2). It catalyzes the reversible conversion of creatine and ATP into ADP and phosphocreatine.</p>
試験プラットフォーム	Microplate reader

製品の特性

保存方法Store at -20°C. Please refer to protocols.

内容	100 tests
Active Creatine Kinase	1 vial
Assay Buffer XX	1 x 25ml
ATP I	1 vial
CK Enzyme Mix	1 vial
Creatine	1 x 1ml
Developer Solution III	1 vial
NADH Standard I	1 vial

画像



Creatine Kinase Activity measured in various samples.

Initial protein concentration for tissue lysates varied from 1 mg/mL to 3 mg/mL. 40 µl of filtered tissue lysates were used. 30 µl of filtered biological fluids were used.

Age	WT	Null	Fold increase
2 months	558 +/- 78 (n = 2)	1433 (n = 1)	2.6
3 months	275 (n = 1)	618 +/- 91 (n = 2)	2.2
4 months	237 +/- 118 (n = 2)	1268 (n = 1)	5.4
5 months	62 +/- 11.5 (n = 2)	226 +/- 105 (n = 3)	3.6
7 months	360 +/- 185 (n = 2)	628 +/- 385 (n = 2)	1.7
1 year	206 (n = 1)	307 (n = 1)	1.5

doi:10.1371/journal.pgen.1005340.t001

Sengle, Gerhard et al.
 PLoS genetics vol. 11,6 e1005340. (2015)

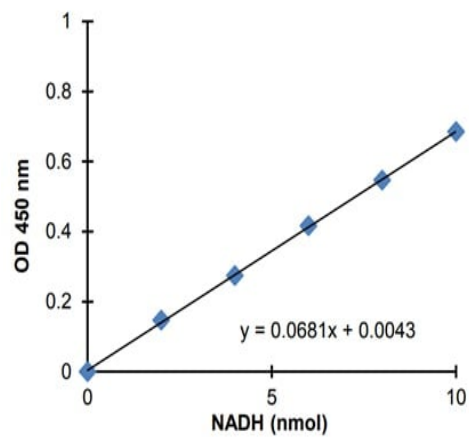
Functional Studies - Creatine Kinase Activity Assay

Kit (Colorimetric) (ab155901)

Sengle, Gerhard et al., PLoS genetics ?vol. 11,6
 e1005340., Table 1, doi:10.1371/journal.pgen.1005340

Creatine kinase activities in blood samples from wildtype and Fbn2 null mice.

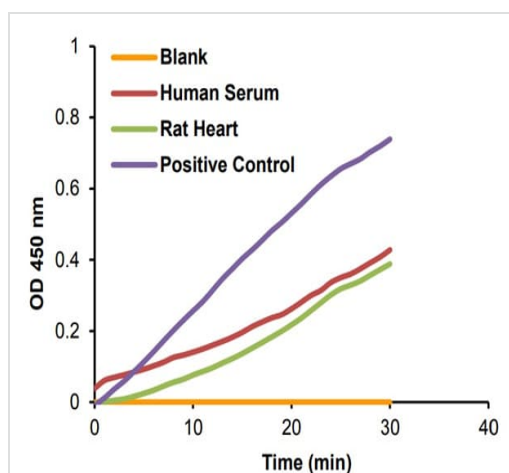
Mean +/- standard deviation for a given genotype and age is shown, except where only one animal was tested. N = number of animals tested. Units are nmol NADH/min/ml.



Functional studies - Creatine Kinase Activity Assay

Kit

Typical NADH standard calibration curve using colorimetric reading.



Creatine kinase activity tested in 5 μ l human serum and 192 ng rat heart lysate. Assay performed following kit protocol.

Figure 1

Please note: All products are "FOR RESEARCH USE ONLY. NOT FOR USE IN DIAGNOSTIC PROCEDURES"

Our Abpromise to you: Quality guaranteed and expert technical support

- Replacement or refund for products not performing as stated on the datasheet
- Valid for 12 months from date of delivery
- Response to your inquiry within 24 hours
- We provide support in Chinese, English, French, German, Japanese and Spanish
- Extensive multi-media technical resources to help you
- We investigate all quality concerns to ensure our products perform to the highest standards

If the product does not perform as described on this datasheet, we will offer a refund or replacement. For full details of the Abpromise, please visit <https://www.abcam.co.jp/abpromise> or contact our technical team.

Terms and conditions

- Guarantee only valid for products bought direct from Abcam or one of our authorized distributors