

Complex IV Human Enzyme Activity Microplate Assay Kit ab109909

★★★★★ [2 Abreviews](#) [45 References](#) [画像数 2](#)

製品の概要

| | |
|---------|---|
| 製品名 | Complex IV Human Enzyme Activity Microplate Assay Kit |
| 検出方法 | Colorimetric |
| サンプルの種類 | Cell culture extracts, Tissue |
| アッセイタイプ | Enzyme activity |
| 種交差性 | 交差種: Cow, Human, Pig 非交差種: Mouse, Rat |
| 製品の概要 | The Complex IV Human Enzyme Activity Microplate Assay Kit is used to determine the activity of cytochrome c oxidase in a human sample with greater speed and simplicity. The COX enzyme is immunocaptured within the wells of the microplate and activity is determined colorimetrically by following the oxidation of reduced cytochrome c by the absorbance change at 550 nm. Included in this kit for performance of the activity assay are buffer, detergent, substrate, and 96-well microplate with monoclonal antibody pre-bound to the wells of the plate, allowing for a streamlined assay. |

Store Tube 1, detergent, and microplate at 4°C – DO NOT FREEZE. Store Reagent C at -20°C or at -80°C for long-term storage.

特記事項

Range of complex IV / cytochrome c oxidase assay kits

Biochemical assay - [ab239711](#)

Immunocapture with biochemical assay (plate-based)*** - [ab109911 \(rodent\)](#) and [ab109909 \(human\)](#) (this kit)

*** Most popular assay format

Immunocapture with biochemical assay (dipstick) - [ab109878 \(rodent\)](#) and [ab109876 \(human\)](#)

Immunocapture with biochemical assay and ELISA - [ab109910 \(human\)](#)

ELISA - [ab179880 \(human\)](#)

Other related products

Review the [mitochondrial assay guide](#), or the full [metabolism assay guide](#) to learn about more assays for metabolites, metabolic enzymes, mitochondrial function, and oxidative stress, and also how to assay metabolic function in live cells using your plate reader.

製品の特性

保存方法

Please refer to protocols.

| 内容 | 96 tests |
|----------------------------------|----------|
| 96-well microplate (12 strips) | 1 unit |
| Tube 1 (Buffer) | 1 x 10ml |
| Detergent | 1 x 1ml |
| Reagent C (Reduced Cytochrome c) | 1 x 1ml |

画像

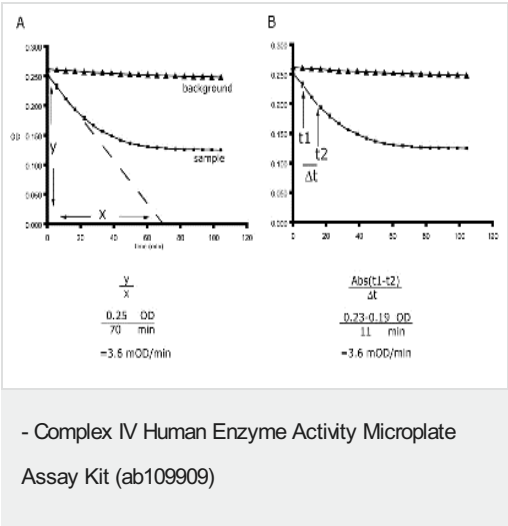
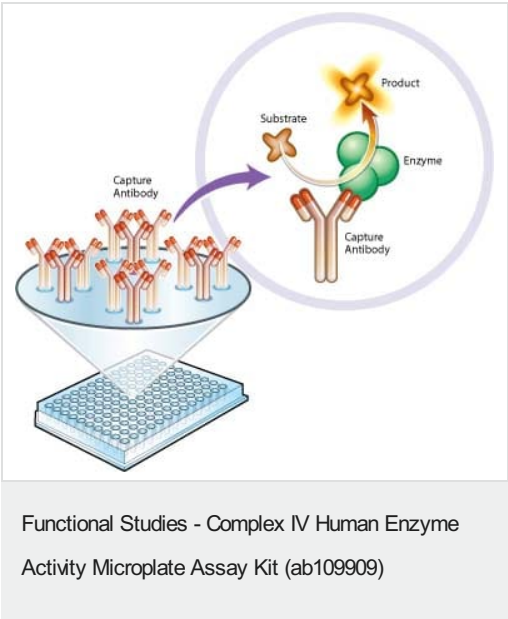


Figure 1. To determine the activity in the sample, calculate the slope by using microplate software or by manual calculations using one of the two methods shown. Compare the sample rate with the rate of the control (normal) sample and with the rate of the null (background) to get the relative Complex IV activity. (A)The rate is determined by calculating the gradient of the initial slope over the linear region. (B) The rate is determined by calculating the slope between two points within the linear region.



Abcam's enzyme activity assays apply a novel approach, whereby target enzymes are first immunocaptured from tissue or cell samples before subsequent functional analysis. All of our ELISA kits utilize highly validated monoclonal antibodies and proprietary buffers, which are able to capture even very large enzyme complexes in their fully-intact, functionally-active states.

Capture antibodies are pre-coated in the wells of premium Nunc MaxiSorp™ modular microplates, which can be broken into 8-well strips. After the target has been immobilized in the well, substrate is added, and enzyme activity is analyzed by measuring the change in absorbance of either the substrate or the product of the reaction (depending upon which enzyme is being analyzed). By analyzing the enzyme's activity in an isolated context, outside of the cell and free

from any other variables, an accurate measurement of the enzyme's functional state can be understood.

Please note: All products are "FOR RESEARCH USE ONLY. NOT FOR USE IN DIAGNOSTIC PROCEDURES"

Our Abpromise to you: Quality guaranteed and expert technical support

- Replacement or refund for products not performing as stated on the datasheet
- Valid for 12 months from date of delivery
- Response to your inquiry within 24 hours
- We provide support in Chinese, English, French, German, Japanese and Spanish
- Extensive multi-media technical resources to help you
- We investigate all quality concerns to ensure our products perform to the highest standards

If the product does not perform as described on this datasheet, we will offer a refund or replacement. For full details of the Abpromise, please visit <https://www.abcam.co.jp/abpromise> or contact our technical team.

Terms and conditions

- Guarantee only valid for products bought direct from Abcam or one of our authorized distributors