

# Complex I Immunocapture Kit ab109711

**24 References**    [画像数 1](#)

### 製品の概要

製品名	Complex I Immunocapture Kit
アッセイタイプ	Quantitative
種交差性	交差種: Mouse, Rat, Cow, Human
製品の概要	<p>Optimized for isolation of Complex I from small amounts of tissue for activity assays and other analyses. Based on a highly specific antibody.</p> <p>250 µg, 500 µg or 750 µg monoclonal antibody irreversibly crosslinked to protein G-agarose beads which can immunocapture ~60 µg, ~120 µg or ~180 µg respectively of Complex I from heart mitochondria.</p> <p>ab109711 allows for isolation of Complex I from small amounts of tissue. This facilitates subsequent analysis of assembly state and activity. Thus the enzyme retains NADH-ferricyanide, NADH-CoQ1 and NADH hexaaminoruthenium reductase activities after isolation, and with added lipids it also shows significant rotenone sensitivity. Finally, the extent of post translational modifications including oxidative damage can be readily analyzed by proteomic approaches or antibody detection of these modifications. Uses for ab109711 include but are not limited to examining alterations of Complex I subunits in inherited mitochondrial diseases, Parkinson's disease, Alzheimer's disease, ALS, schizophrenia, and aging.</p> <p>Note: The immunocapture protocol for this kit requires Abcam detergent (lauryl maltoside, <b><u>ab109857</u></b>).</p> <p>Product supplied as a 6.25% slurry. For the 250 µg, this consists of 250 µg antibody conjugated to 25 µL beads in a volume of 250 µL.</p>

### 特記事項

#### Related products

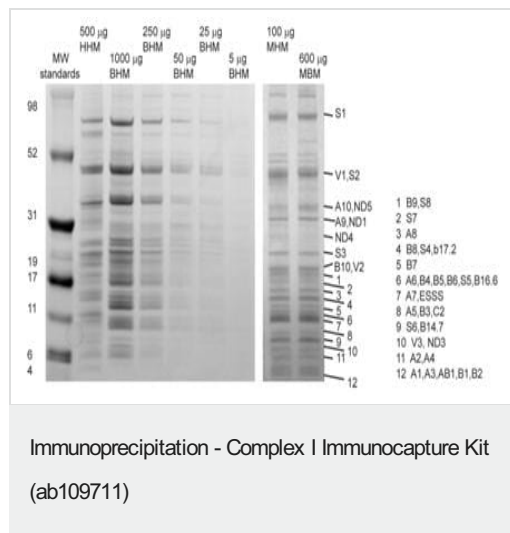
Review the [mitochondrial assay guide](#), or the full [metabolism assay guide](#) to learn about more assays for metabolites, metabolic enzymes, mitochondrial function, and oxidative stress, and also how to assay metabolic function in live cells using your plate reader.

### 製品の特性

保存方法	Store at +4°C. Please refer to protocols.
------	---

内容	250 µg
Complex 1 monoclonal antibody coupled agarose beads	2 x 250µg

## 画像



Complex I was immunopurified from mitochondria isolated from human heart (HHM), cow/bovine heart (BHM), mouse heart (MHM) and mouse brain (MBM). The lanes were stained with Coomassie Brilliant Blue R. Bands were excised from the gel and proteolytically digested for mass spectrometry analysis."

**Please note:** All products are "FOR RESEARCH USE ONLY. NOT FOR USE IN DIAGNOSTIC PROCEDURES"

## Our Abpromise to you: Quality guaranteed and expert technical support

- Replacement or refund for products not performing as stated on the datasheet
- Valid for 12 months from date of delivery
- Response to your inquiry within 24 hours
- We provide support in Chinese, English, French, German, Japanese and Spanish
- Extensive multi-media technical resources to help you
- We investigate all quality concerns to ensure our products perform to the highest standards

If the product does not perform as described on this datasheet, we will offer a refund or replacement. For full details of the Abpromise, please visit <https://www.abcam.co.jp/abpromise> or contact our technical team.

## Terms and conditions

- Guarantee only valid for products bought direct from Abcam or one of our authorized distributors