

# Cathepsin G Activity Assay Kit (Colorimetric) ab126780

[13 References](#) [画像数 4](#)

### 製品の概要

---

製品名	Cathepsin G Activity Assay Kit (Colorimetric)
検出方法	Colorimetric
サンプルの種類	Tissue Extracts, Cell Lysate
アッセイタイプ	Enzyme activity (quantitative)
検出範囲	0 nmol/well - 50 nmol/well
全工程の試験時間	1h 00m
種交差性	交差種: Mammals, Other species
製品の概要	Cathepsin G Activity Assay Kit (Colorimetric) (ab126780) is an assay where Cathepsin G will cleave the substrate and release the dye group, <i>p</i> -NA (4-Nitroaniline), which can be detected at 405 nm. In presence of the Cathepsin G specific inhibitor, the cleavage will be stopped. The kit provides a rapid, simple, sensitive, and reliable test for the activity of Cathepsin G.

Visit our [FAQs page](#) for tips and troubleshooting.

**特記事項** This product is manufactured by BioVision, an Abcam company and was previously called K146 Cathepsin G Activity Colorimetric Assay Kit. K146-100 is the same size as the 100 test size of ab126780.

Cathepsin G is an enzymatic protein belonging to the peptidase or protease families. The protein is found in azurophil granules of neutrophilic polymorphonuclear leukocytes. The encoded protease has a specificity similar to that of chymotrypsin C, and may participate in the killing and digestion of engulfed pathogens, and in connective tissue remodeling at sites of inflammation.

Abcam has not and does not intend to apply for the REACH Authorisation of customers' uses of products that contain European Authorisation list (Annex XIV) substances.

It is the responsibility of our customers to check the necessity of application of REACH Authorisation, and any other relevant authorisations, for their intended uses.

**試験プラットフォーム** Microplate reader

### 製品の特性

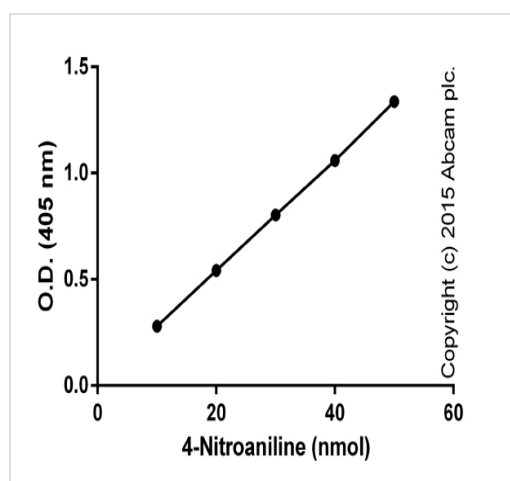
---

**保存方法** Store at -20°C. Please refer to protocols.

内容	100 tests
Assay Buffer XLVI	1 x 25ml
Cathepsin G Inhibitor	1 x 20 $\mu$ l
Cathepsin G Substrate	1 x 200 $\mu$ l
Human Cathepsin G	1 vial
pNA Standard I	1 x 20 $\mu$ l

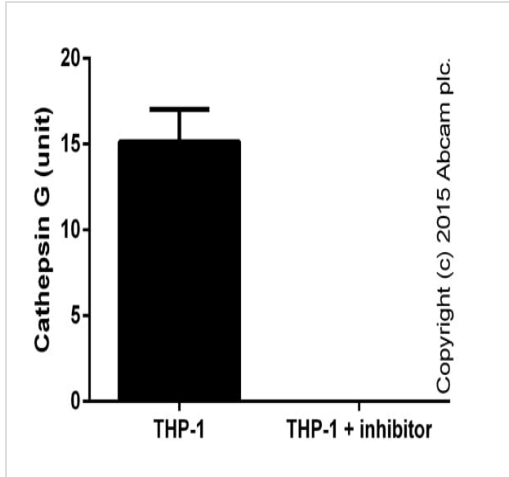
<b>機能</b>	Serine protease with trypsin- and chymotrypsin-like specificity. Cleaves complement C3. Has antibacterial activity against the Gram-negative bacterium <i>P.aeruginosa</i> , antibacterial activity is inhibited by LPS from <i>P.aeruginosa</i> , Z-Gly-Leu-Phe-CH <sub>2</sub> Cl and phenylmethylsulfonyl fluoride.
<b>配列類似性</b>	Belongs to the peptidase S1 family. Contains 1 peptidase S1 domain.
<b>細胞内局在</b>	Cell surface.

## 画像



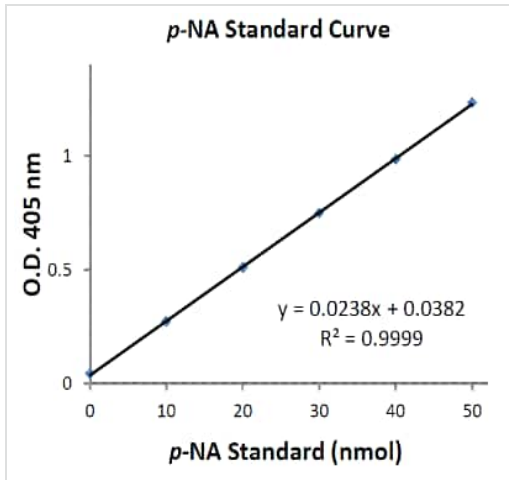
Standard curve with background signal subtracted (duplicates; +/- SD).

Functional Assay: ab126780 Cathepsin G Activity  
Assay Kit (Colorimetric)



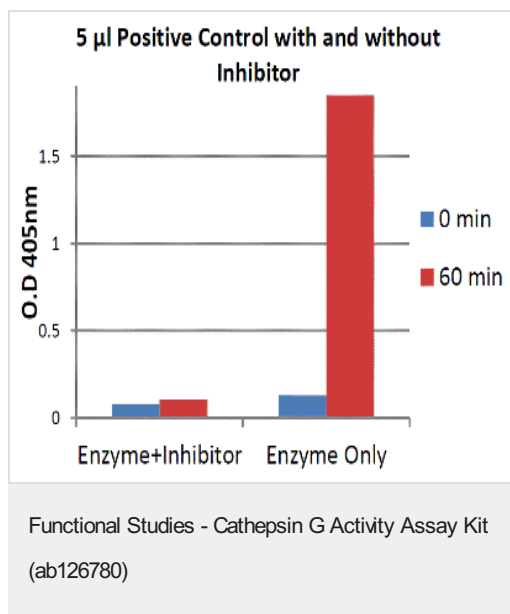
Cathepsin G activity in THP-1 lysates (duplicates +/- SD). Data corresponds to 1 million cells per well.

Functional Assay: ab126780 Cathepsin G Activity Assay Kit (Colorimetric)



p-NA Standard Curve. Performed according to assay protocol.

Functional Studies - Cathepsin G Activity Assay Kit (ab126780)



Assay results for 5 µl of positive control with and without an inhibitor

**Please note:** All products are "FOR RESEARCH USE ONLY. NOT FOR USE IN DIAGNOSTIC PROCEDURES"

### Our Abpromise to you: Quality guaranteed and expert technical support

- Replacement or refund for products not performing as stated on the datasheet
- Valid for 12 months from date of delivery
- Response to your inquiry within 24 hours
- We provide support in Chinese, English, French, German, Japanese and Spanish
- Extensive multi-media technical resources to help you
- We investigate all quality concerns to ensure our products perform to the highest standards

If the product does not perform as described on this datasheet, we will offer a refund or replacement. For full details of the Abpromise, please visit <https://www.abcam.co.jp/abpromise> or contact our technical team.

### Terms and conditions

- Guarantee only valid for products bought direct from Abcam or one of our authorized distributors