

ATP synthase Specific Activity Microplate Assay Kit ab109716

9 References [画像数 8](#)

製品の概要

製品名	ATP synthase Specific Activity Microplate Assay Kit
検出方法	Colorimetric
サンプルの種類	Cell culture supernatant, Cell culture extracts, Tissue, Tissue Extracts, Cell Lysate
アッセイタイプ	Enzyme activity
種交差性	交差種: Rat, Cow, Human 非交差種: Mouse
製品の概要	<p>ATP Synthase Activity Assay Kit ab109716 is used to determine both the activity and quantity of ATP synthase (Complex V) in a human or rat sample. The ratio of the two measurements represents the enzyme's specific activity.</p> <p>In the ATP synthase assay protocol, the ATP synthase enzyme is immunocaptured within the wells of a microplate. The conversion of ATP to ADP by ATP synthase is coupled to the oxidative reaction of NADH to NAD⁺. The formation of NAD⁺ results in a decrease in absorbance at 340 nm which is proportional to the amount of enzyme activity.</p> <p>Subsequently, the quantity of ATP synthase is determined by adding an anti-ATP synthase antibody conjugated with alkaline phosphatase. Alkaline phosphatase acts on the substrate pNPP to form a yellow color (OD 405 nm) proportional to the amount of ATP synthase captured in the wells.</p> <p>ATP synthase assay protocol summary:</p> <ul style="list-style-type: none"> - add samples to wells and incubate for 3 hrs to capture enzyme - wash - add lipid mix and incubate for 45 min - add reaction mix - analyze enzyme activity with microplate reader for 1-2 hrs at 1 min intervals - empty wells and incubate with solution A for 1 hr - wash - add solution B and incubate for 1 hr - wash - add development solution - analyze enzyme quantity with microplate reader for 30 min at 1 min intervals <p>特記事項 Store Buffer, Detergent, Detector Antibody, AP Label, AP Buffer, and the microplate at 4°C. Store</p>

the Reagent Mix, AP Development Reagent and Lipid Mix at -20°C. For multiple experiments, the Reagent Mix and AP Development Reagent may be aliquoted and stored at -20°C, or at -80°C for long term storage.

試験プラットフォーム

Microplate reader

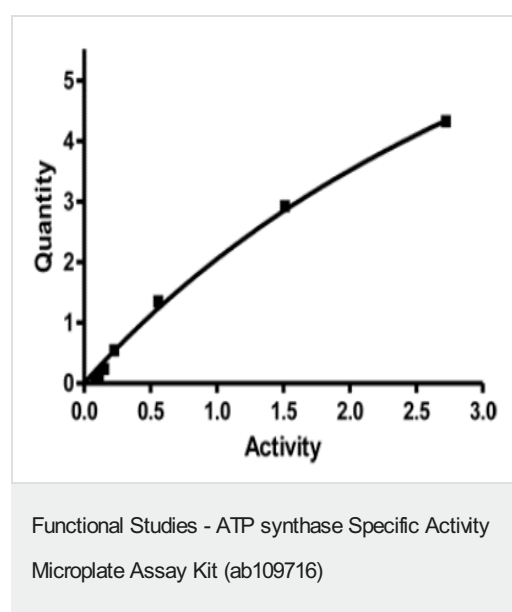
製品の特性

保存方法

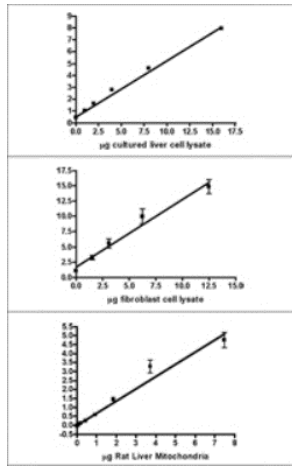
Please refer to protocols.

内容	ラベル	96 tests
AP ATP synthase Detector antibody		1 x 1ml
AP Buffer	Tube 2	1 x 20ml
AP Development Reagent		1 x 400µl
AP label 2500 X	Tube B	1 x 12µl
ATP synthase precoated Microtiter plate		1 unit
Buffer	Tube 1	1 x 15ml
Detergent		1 x 1ml
Phospholipids		1 x 6ml
Reagent Mix		1 x 20ml

画像

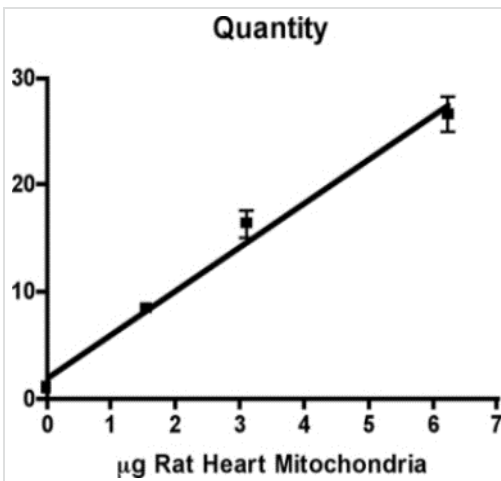


By measuring both quantity and activity of ATP synthase in a sample, the ratio of the two parameters can be calculated. This is the relative specific activity and should be compared to the normal or control.



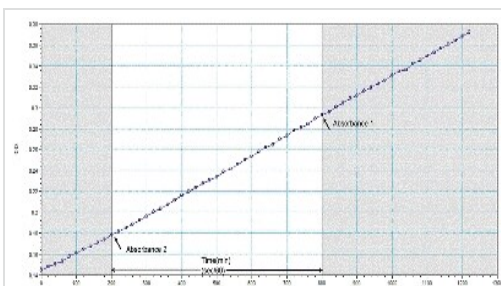
Examples of quantity/load relationships for cultured liver cell lysate, fibroblast lysate, and rat liver mitochondria.

Functional Studies - ATP synthase Specific Activity
Microplate Assay Kit (ab109716)



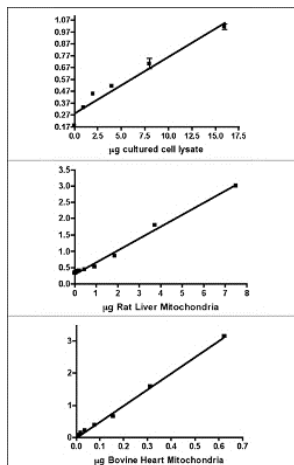
Functional study using ATP synthase Specific Activity Microplate Assay Kit (ab109716) measuring enzyme quantity.

Functional Studies - ATP synthase Specific Activity
Microplate Assay Kit (ab109716)



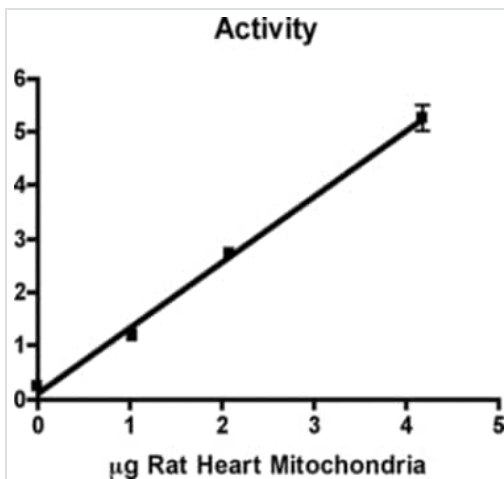
Functional study using ATP synthase Specific Activity Microplate Assay Kit (ab109716).

Functional Studies - ATP synthase Specific Activity
Microplate Assay Kit (ab109716)



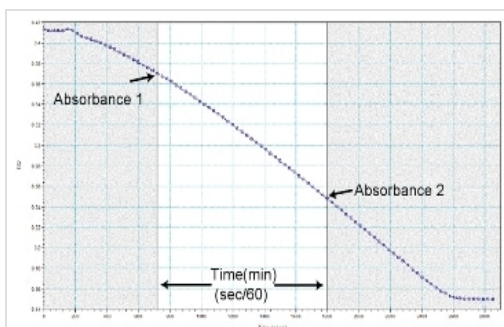
Examples of activity/load relationships for cultured cell lysate, rat liver mitochondria, and bovine heart mitochondria.

Functional Studies - ATP synthase Specific Activity
Microplate Assay Kit (ab109716)



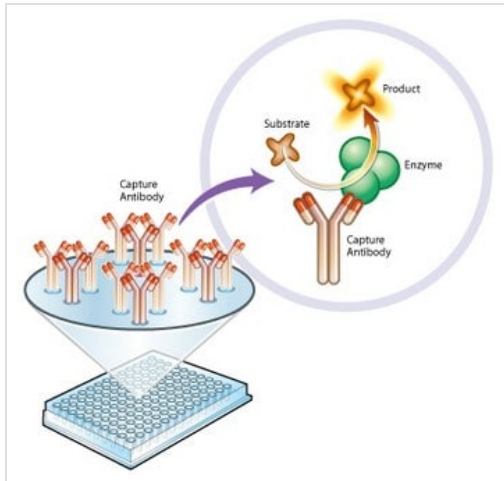
Functional study using ATP synthase Specific Activity Microplate Assay Kit (ab109716) measuring enzyme activity.

Functional Studies - ATP synthase Specific Activity
Microplate Assay Kit (ab109716)



Functional study using ATP synthase Specific Activity Microplate Assay Kit (ab109716)

Functional Studies - ATP synthase Specific Activity
Microplate Assay Kit (ab109716)



Principle of ATP synthase Specific Activity Microplate Assay Kit (ab109716).

Functional Studies - ATP synthase Specific Activity
Microplate Assay Kit (ab109716)

Please note: All products are "FOR RESEARCH USE ONLY. NOT FOR USE IN DIAGNOSTIC PROCEDURES"

Our Abpromise to you: Quality guaranteed and expert technical support

- Replacement or refund for products not performing as stated on the datasheet
- Valid for 12 months from date of delivery
- Response to your inquiry within 24 hours
- We provide support in Chinese, English, French, German, Japanese and Spanish
- Extensive multi-media technical resources to help you
- We investigate all quality concerns to ensure our products perform to the highest standards

If the product does not perform as described on this datasheet, we will offer a refund or replacement. For full details of the Abpromise, please visit <https://www.abcam.co.jp/abpromise> or contact our technical team.

Terms and conditions

- Guarantee only valid for products bought direct from Abcam or one of our authorized distributors