

Parkinson's Disease Research Antibody Panel ab226767

リコンビナント

画像数 5

製品の概要

製品名 Parkinson's Disease Research Antibody Panel

製品の概要 ab226767 is a Parkinson's Disease research panel containing 5 recombinant rabbit monoclonal antibodies and 1 Anti-Rabbit IgG (HRP) secondary antibody: Anti-alpha synuclein antibody, Anti-LRRK2 antibody, Anti-PINK1 antibody, Anti-PARK/DJ1 antibody and Goat Anti-Rabbit IgG (H&L) (HRP).

The hallmark pathologies of Parkinson's disease include the loss of dopaminergic neurons from the pars compacta, a portion of the substantia nigra in the midbrain, causing slowness of movement (bradykinesia), resting tremor and rigidity. This is coupled with the presence of intracellular protein aggregates known as Lewy bodies.

The antibodies in this panel were selected for their exceptional performance in imaging applications, alongside other applications. Please see the individual datasheets for additional information.

特記事項 **Explore our range of antibody sample panels** designed to provide you with a variety of trial-size antibodies in a convenient and cost-effective format.

Directly conjugated versions of our antibodies are available and ready to use for multicolor analysis. **Carrier-free formulations** are also available for easy conjugation to labels of your choice. Please refer to the 'Associated products' section below.

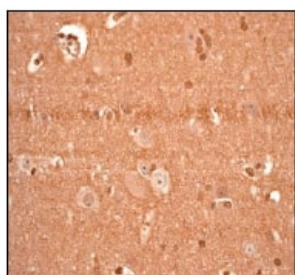
製品の特性

保存方法 Store at -20°C. Please refer to protocols.

内容	1 packs
<u>ab138501 - Anti-alpha Synuclein antibody [MJFR1]</u>	1 x 10µl
<u>ab133474 - Anti-LRRK2 antibody [MJFF2 (c41-2)]</u>	1 x 10µl
<u>ab76008 - Anti-PARK7/DJ1 antibody [EP2815Y]</u>	1 x 10µl

内容	1 packs
ab216144 - Anti-PINK1 antibody [EPR20730]	1 x 10µl
ab205718 - Goat Anti-Rabbit IgG H+L (HRP)	1 x 100µg

画像

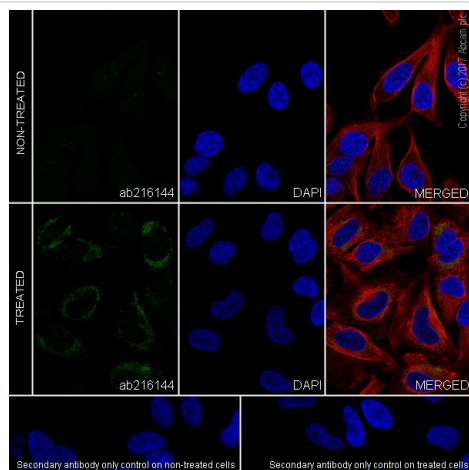


Immunohistochemistry (Formalin/PFA-fixed paraffin-embedded sections) - Anti-PARK7/DJ1 antibody [EP2815Y] (

ab76008

)

ab76008, at 1/250 dilution, staining PARK7/DJ1 in human brain by immunohistochemistry using paraffin-embedded tissue.



Immunocytochemistry/ Immunofluorescence - Anti-PINK1 antibody [EPR20730] (

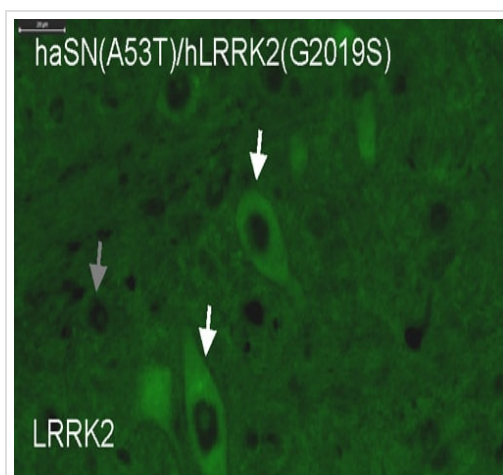
ab216144

)

Immunofluorescent analysis of 4 % paraformaldehyde-fixed, 0.1% Triton X-100 permeabilized HeLa (human epithelial cell line from cervix adenocarcinoma)(+/- treatment with 10µM carbonyl cyanide 3-chlorophenylhydrazine (CCCP) for 24 hours) cells labeling PINK1 with **ab216144** at 1/500 dilution, followed by Goat Anti-Rabbit IgG H&L (Alexa Fluor® 488) (**ab150077**) secondary antibody at 1/1000 dilution (green). Confocal image showing cytoplasmic staining on HeLa cells treated with 10µM carbonyl cyanide 3-chlorophenylhydrazine (CCCP) for 24 hours. The nuclear counter stain is DAPI (blue). Tubulin is detected with Anti-alpha Tubulin antibody [DM1A] - Microtubule Marker (Alexa Fluor® 594) (**ab195889**) at 1/200 dilution (red).

The negative controls are as follows:

-ve control: PBS, followed by Goat Anti-Rabbit IgG H&L (Alexa Fluor® 488) (**ab150077**) secondary antibody at 1/1000 dilution.



Immunohistochemistry (Formalin/PFA-fixed paraffin-embedded sections) - Anti-LRRK2 antibody [MJFF2 (c41-2)] (

ab133474

)

Immunohistochemical analysis of mouse brain tissue, staining LRRK2 with **ab133474**.

Antigen retrieval was performed by heat mediation and tissue was blocked with 2% goat serum. Sections were incubated with primary antibody (1/200) overnight at 4°C. An AlexaFluor®488-conjugated goat anti-rabbit IgG was used as the secondary antibody.



Immunohistochemistry (Formalin/PFA-fixed paraffin-embedded sections) - Anti-Alpha-synuclein antibody [MJFR1] (

ab138501

)

IHC image of alpha Synuclein staining in normal Human cerebral cortex formalin fixed paraffin embedded tissue section, performed on a Leica Bond™ system using the standard protocol F. The section was pre-treated using heat mediated antigen retrieval with sodium citrate buffer (pH6, epitope retrieval solution 1) for 20 mins. The section was then incubated with **ab138501**, 5µg/ml, for 15 mins at room temperature and detected using an HRP conjugated compact polymer system. DAB was used as the chromogen. The section was then counterstained with haematoxylin and mounted with DPX.

For other IHC staining systems (automated and non-automated) customers should optimize variable parameters such as antigen retrieval conditions, primary antibody concentration and antibody incubation times.

Why choose a recombinant antibody?



Research with confidence
Consistent and reproducible results



Long-term and scalable supply
Recombinant technology



Success from the first experiment
Confirmed specificity



Ethical standards compliant
Animal-free production

Parkinson's Disease Research Antibody Panel
(ab226767)

Please note: All products are "FOR RESEARCH USE ONLY. NOT FOR USE IN DIAGNOSTIC PROCEDURES"

Our Abpromise to you: Quality guaranteed and expert technical support

- Replacement or refund for products not performing as stated on the datasheet
- Valid for 12 months from date of delivery
- Response to your inquiry within 24 hours
- We provide support in Chinese, English, French, German, Japanese and Spanish
- Extensive multi-media technical resources to help you
- We investigate all quality concerns to ensure our products perform to the highest standards

If the product does not perform as described on this datasheet, we will offer a refund or replacement. For full details of the Abpromise, please visit <https://www.abcam.co.jp/abpromise> or contact our technical team.

Terms and conditions

- Guarantee only valid for products bought direct from Abcam or one of our authorized distributors