

# Astrocyte Marker (ALDH1L1, EAAT1, EAAT2, GFAP) Antibody Sampler Panel ab226481

リコンビナント

画像数 5

### 製品の概要

**製品名** Astrocyte Marker (ALDH1L1, EAAT1, EAAT2, GFAP) Antibody Sampler Panel

**製品の概要** Astrocyte Marker (ALDH1L1, EAAT1, EAAT2, GFAP) Antibody Sampler Panel (ab226481) is an astrocyte marker panel containing 4 recombinant rabbit monoclonal antibodies and 1 Anti-Rabbit IgG (HRP) secondary antibody: Anti-GFAP antibody, Anti-ALDH1L1 antibody, Anti-EAAT1 antibody, Anti-EAAT2 antibody, and Goat Anti-Rabbit IgG (H&L) (HRP).

Astrocytes are star-shaped glial cells and serve a wide variety of functions in the central nervous system, which are vital for brain development, physiology and pathology.

The antibodies in this panel were selected for their exceptional performance in IHC, alongside other applications. Please see the individual datasheets for additional information.

### 特記事項

**Explore our range of antibody sample panels** designed to provide you with a variety of trial-size antibodies in a convenient and cost-effective format.

**Carrier-free formulations** of our recombinant antibodies are available and ready to use for multiplex IHC analysis including Imaging Mass Cytometry™. Please refer to the 'Associated products' section below.

### 製品の特徴

**保存方法** Store at -20°C. Please refer to protocols.

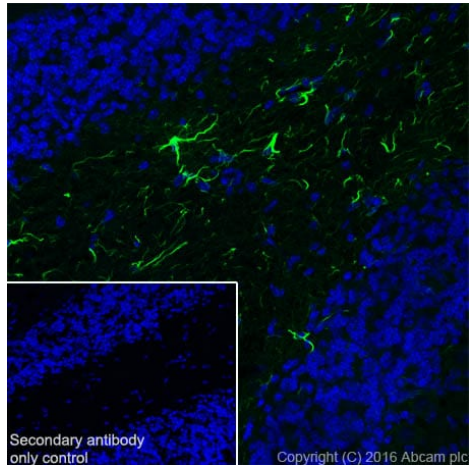
内容	1 packs
<a href="#">ab177463 - Anti-ALDH1L1 antibody [EPR12743(B)]</a>	1 x 10µl
<a href="#">ab181036 - Anti-EAAT1 antibody [EPR12686]</a>	1 x 10µl
<a href="#">ab205248 - Anti-EAAT2 antibody [EPR19798]</a>	1 x 10µl
<a href="#">ab68428 - Anti-GFAP antibody [EPR1034Y]</a>	1 x 10µl

内容	1 packs
<b>ab205718 - Goat Anti-Rabbit IgG H&amp;L (HRP)</b>	1 x 100µg

**細胞内局在**

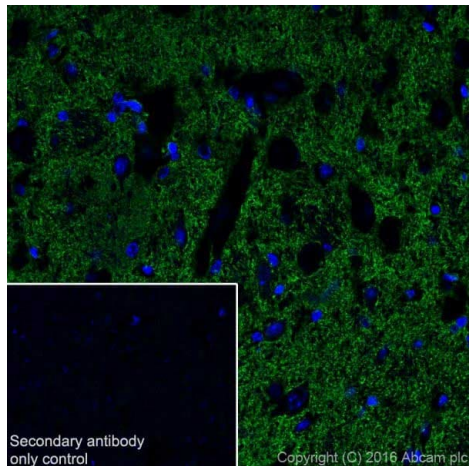
GFAP: Cytoplasm. Associated with intermediate filaments. EAAT1: Membrane. EAAT2: Membrane. ALDH1L1: Cytoplasm.

**画像**



Immunocytochemistry/ Immunofluorescence - Anti-GFAP antibody [EPR1034Y] (  )

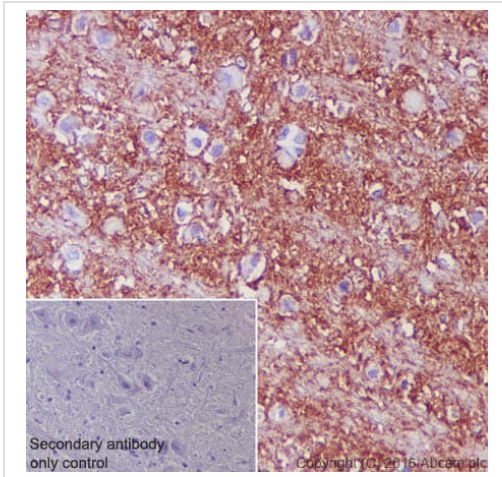
Immunocytochemistry/Immunofluorescence analysis of mouse cerebellum tissue lysate labelling GFAP with **ab68428** at 1/100. The sample was fixed with 4% Paraformaldehyde and permeabilized with 0.2% Triton X-100. **ab150077**, Alexa Fluor® 488-conjugated goat anti-rabbit IgG (1/1000) was used as the secondary antibody. Antigen retrieval was performed by heated citrate solution (10mM citrate PH 6.0 + 0.05% Tween-20). Nuclei were counterstained with DAPI (blue). PBS was used instead of the primary antibody as negative control.



Immunohistochemistry (Frozen sections) - Anti-EAAT2 antibody [EPR19798] (  )

Immunohistochemical analysis of 4% paraformaldehyde-fixed, 0.2% Triton X-100 permeabilized frozen Mouse striatum tissue labeling EAAT2 with **ab205248** at 1/500 dilution, followed by Goat Anti-Rabbit IgG (Alexa Fluor® 488) (**ab150077**) secondary antibody at 1/1000 dilution (green). Membrane staining on mouse striatum is observed [PMID: 25391854]. The nuclear counterstain is DAPI (blue).

Secondary antibody only control: Used PBS instead of primary antibody, secondary antibody is **ab150077** at 1/1000 dilution.

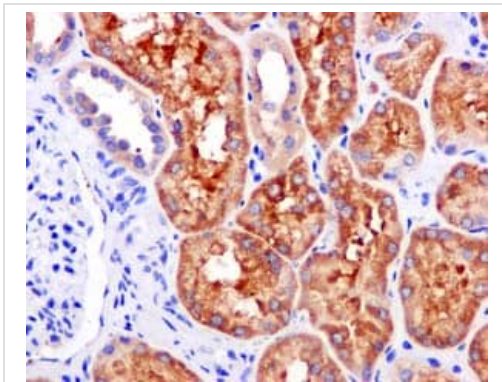


**ab181036** staining EAAT1 in rat cerebral cortex tissue sections by Immunohistochemistry (IHC-P - paraformaldehyde-fixed, paraffin-embedded sections). Tissue was fixed with paraformaldehyde and antigen retrieval was by heat mediation in a EDTA buffer. Samples were incubated with primary antibody at a dilution of 1/1000. A goat anti-rabbit IgG H&L (HRP) **ab97051** was used as the secondary antibody at 1/500.

Immunohistochemistry (Formalin/PFA-fixed paraffin-embedded sections) - Anti-EAAT1 antibody [EPR12686] (

**ab181036**

)



Immunohistochemical analysis of paraffin-embedded Human kidney tissue labeling ALDH1L1 with **ab177463** at 1/50 dilution.

Immunohistochemistry (Formalin/PFA-fixed paraffin-embedded sections) - Anti-ALDH1L1 [EPR12743(B)] antibody (

**ab177463**

)

### Why choose a recombinant antibody?



**Research with confidence**  
Consistent and reproducible results



**Long-term and scalable supply**  
Recombinant technology



**Success from the first experiment**  
Confirmed specificity



**Ethical standards compliant**  
Animal-free production

Astrocyte Marker (ALDH1L1, EAAT1, EAAT2,  
GFAP) Antibody Sampler Panel (ab226481)

**Please note:** All products are "FOR RESEARCH USE ONLY. NOT FOR USE IN DIAGNOSTIC PROCEDURES"

### Our Abpromise to you: Quality guaranteed and expert technical support

---

- Replacement or refund for products not performing as stated on the datasheet
- Valid for 12 months from date of delivery
- Response to your inquiry within 24 hours
- We provide support in Chinese, English, French, German, Japanese and Spanish
- Extensive multi-media technical resources to help you
- We investigate all quality concerns to ensure our products perform to the highest standards

If the product does not perform as described on this datasheet, we will offer a refund or replacement. For full details of the Abpromise, please visit <https://www.abcam.co.jp/abpromise> or contact our technical team.

### Terms and conditions

---

- Guarantee only valid for products bought direct from Abcam or one of our authorized distributors