

Cytokine Array - Human Cytokine Antibody Array (Membrane, 80 Targets) ab133998

31 References [画像数 2](#)

製品の概要

製品名	Cytokine Array - Human Cytokine Antibody Array (Membrane, 80 Targets)
サンプルの種類	Cell culture supernatant, Saliva, Milk, Urine, Serum, Plasma, Cell culture extracts, Other biological fluids, Whole Blood, Tissue Extracts, Cell Lysate, Cell culture media
アッセイタイプ	Semi-quantitative
種交差性	交差種: Human
製品の概要	ab133998 is for simultaneous detection of 80 Human Cytokines. Suitable for all sample types.

Targets: ENA-78, GCSF, GM-CSF, GRO, GRO-alpha, I-309, IL-1alpha, IL-1beta, IL-2, IL-3, IL-4, IL-5, IL-6, IL-7, IL-8, IL-10, IL-12 p40/p70, IL-13, IL-15, IFN-gamma, MCP-1, MCP-2, MCP-3, MCSF, MDC, MIG, MIP-1beta, MIP-1delta, RANTES, SCF, SDF-1, TARC, TGF-beta1, TNF-alpha, TNF-beta, EGF, IGF-I, Angiogenin, Oncostatin M, Thrombopoietin, VEGF-A, PDGF-BB, Leptin, BDNF, BLC, Ck38-1, Eotaxin, Eotaxin-2, Eotaxin-3, FGF-4, FGF-6, FGF-7, FGF-9, Flt-3 Ligand, Fractalkine, GCP-2, GDNF, HGF, IGFBP-1, IGFBP-2, IGFBP-3, IGFBP-4, IL-16, IP-10, LIF, LIGHT, MCP-4, MIF, MIP-3 alpha, NAP-2, NT-3, NT-4, Osteopontin, Osteoprotegerin, PARC, PLGF, TGF-beta2, TGF-beta3, TIMP-1, TIMP-2

Cytokine arrays are an antibody-pair-based assay, analogous to ELISA, but using a membrane as a substrate rather than a plate. Capture antibodies are supplied arrayed/spotted on a membrane with each pair of spots representing a different analyte. Sample is added (1mL/sample to each membrane), and then paired biotinylated detector antibodies and streptavidin HRP. The cytokine array is analyzed using the same methods as a chemiluminescent western blot. Comparison between samples can be by eye or using densitometry software for a semi-quantitative comparison.

[Learn more about membrane antibody arrays](#)

特記事項

If you are interested in this cytokine array, [cytokine array ab133997](#), [ab169817](#), [ab133996](#), [ab169811](#), [ab169817](#), [ab169812](#), [ab134000](#), [ab169803](#), [ab134002](#), [ab169804](#), [ab169805](#), [ab134003](#) and [ab169819](#) may also be of interest.

A table listing all of our human membrane antibody cytokine arrays and other arrays and the analytes they measure is available [here](#).

Abcam has not and does not intend to apply for the REACH Authorisation of customers' uses of products that contain European Authorisation list (Annex XIV) substances.
It is the responsibility of our customers to check the necessity of application of REACH Authorisation, and any other relevant authorisations, for their intended uses.

アプリケーション

適用あり: Multiplex Protein Detection

製品の特性

保存方法

Store at -20°C. Please refer to protocols.

内容	1 x 4 Membranes	1 x 8 Membranes	1 x 2 Membranes
1,000X HRP-Conjugated Streptavidin	1 x 50µl	1 x 50µl	1 x 50µl
1X Blocking Buffer	1 x 25ml	2 x 25ml	1 x 25ml
20X Wash Buffer I	1 x 10ml	1 x 20ml	1 x 10ml
20X Wash Buffer II	1 x 10ml	1 x 20ml	1 x 10ml
2X Cell Lysis Buffer	1 x 10ml	1 x 16ml	1 x 10ml
8-Well Incubation Tray (with Lid)	1 unit	1 unit	1 unit
Biotin-Conjugated Anti-Cytokines	2 vials	4 vials	1 vial
Cytokine Antibody Array Membranes	4 units	8 units	2 units
Detection Buffer C	1 x 1.5ml	1 x 2.5ml	1 x 1.5ml
Detection Buffer D	1 x 1.5ml	1 x 2.5ml	1 x 1.5ml

アプリケーション

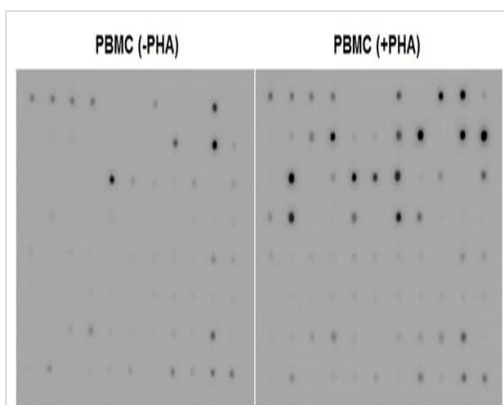
The Abpromise guarantee

Abpromise保証は、次のテスト済みアプリケーションにおけるab133998の使用に適用されます

アプリケーションノートには、推奨の開始希釈率がありますが、適切な希釈率につきましてはご検討ください。

アプリケーション	Abreviews	特記事項
Multiplex Protein Detection		Use at an assay dependent concentration.

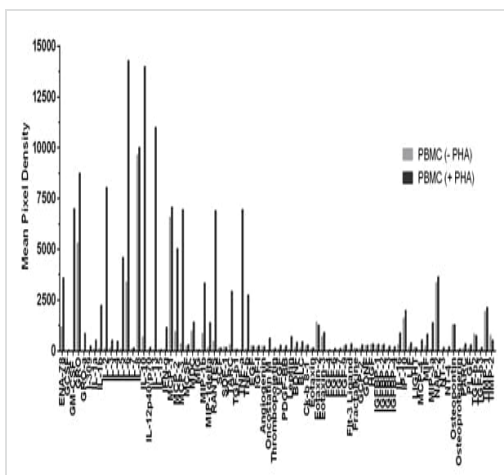
画像



Multiplex Protein Detection - Human Cytokine
Antibody Array - Membrane (80 Targets) (ab133998)

Human peripheral blood cells (1×10^6 cells/mL) were cultured in RPMI media supplemented with 10% fetal calf serum, 100 U/mL penicillin, and 100 mg/mL streptomycin sulfate.

Cells were cultured unstimulated or stimulated with 10 μ g/mL PHA. Conditioned media was harvested after 48 hours, aliquoted and assayed using ab133998.



Quantification of Human Cytokine Antibody Array

Cells were cultured unstimulated or stimulated with 10 mg/mL PHA. Conditioned media was harvested after 48 hours, aliquoted and assayed using ab133998. Mean pixel density was quantified using CCD camera software analysis.

Please note: All products are "FOR RESEARCH USE ONLY. NOT FOR USE IN DIAGNOSTIC PROCEDURES"

Our Abpromise to you: Quality guaranteed and expert technical support

- Replacement or refund for products not performing as stated on the datasheet
- Valid for 12 months from date of delivery
- Response to your inquiry within 24 hours
- We provide support in Chinese, English, French, German, Japanese and Spanish
- Extensive multi-media technical resources to help you
- We investigate all quality concerns to ensure our products perform to the highest standards

If the product does not perform as described on this datasheet, we will offer a refund or replacement. For full details of the Abpromise, please visit <https://www.abcam.co.jp/abpromise> or contact our technical team.

Terms and conditions

- Guarantee only valid for products bought direct from Abcam or one of our authorized distributors