


Product datasheet

Anti-pan Synuclein antibody ab15534

画像数 2

製品の概要

製品名	Anti-pan Synuclein antibody
製品の詳細	Rabbit polyclonal to pan Synuclein
由来種	Rabbit
アプリケーション	適用あり: WB, IHC-P
種交差性	交差種: Human 交差が予測される動物種: Mouse, Rat 
免疫原	Synthetic peptide within pan Synuclein (N terminal). The exact sequence is proprietary. A synthetic peptide corresponding to near N-terminal of human alpha, beta, gamma Synuclein protein.
ポジティブ・コントロール	IHC-P: Human brain tissue.

製品の特性

製品の状態	Liquid
保存方法	Shipped at 4°C. Upon delivery aliquot and store at -20°C. Avoid freeze / thaw cycles.
バッファー	Preservative: 0.01% Sodium Azide Constituents: 1% BSA, 10mM PBS, pH 7.4
精製度	Immunogen affinity purified
ポリ/モノ	ポリクローナル
アイソタイプ	IgG

アプリケーション

Our [Abpromise guarantee](#) covers the use of **ab15534** in the following tested applications.

The application notes include recommended starting dilutions; optimal dilutions/concentrations should be determined by the end user.

アプリケーション	Abreviews	特記事項
WB		Use a concentration of 1 µg/ml. Predicted molecular weight: 17 kDa. Use at a concentration of 1 µg/ml for 2 hours at RT.

アプリケーション	Abreviews	特記事項
IHC-P		1/50. Perform heat mediated antigen retrieval with citrate buffer pH 6 before commencing with IHC staining protocol. 1/50 for 10 min at RT. Boil tissue sections in 10mM citrate buffer, pH 6.0 for 10 min followed by cooling at RT for 20 min.

## ターゲット情報

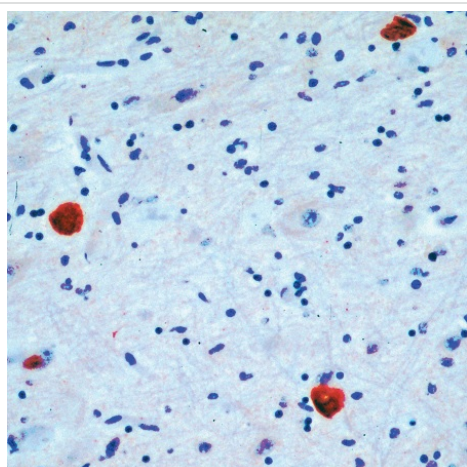
### 関連性

Synucleins are small, soluble proteins expressed primarily in neural tissue and in certain tumors. The family includes three known proteins: alpha, beta and gamma synucleins. Synuclein-alpha is primarily localized at the presynaptic region of axons and it may be involved in the regulation of dopamine release and transport. However, it can form filamentous aggregates that are the major non amyloid component of intracellular inclusions in several neurodegenerative diseases (synucleinopathies). Synuclein-alpha may induce fibrillization of the microtubule-associated protein tau and it reduces neuronal responsiveness to various apoptotic stimuli, leading to a decreased caspase 3 activation. Synuclein-alpha is involved in Parkinson's disease, Lewy body dementia, Brain iron accumulation type 1 (NBIA1, also called Hallervorden-Spatz syndrome) and it is a major non-amyloid component of the deposits associated with Alzheimer's disease. Synuclein-beta may be a regulator of the SNCA aggregation process. It protects neurons from staurosporine and 6 hydroxy dopamine (6OHDA)-stimulated caspase activation that also involves p53 and contributes to restore the SNCA anti-apoptotic function abolished by 6OHDA. Gamma synuclein is found primarily in the peripheral nervous system and retina. High levels of expression have been identified in advanced breast carcinomas suggesting a correlation between overexpression of SNCG and breast tumor development.

### 細胞内局在

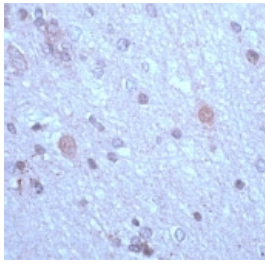
Neuronal cytosol and presynaptic terminals

## 画像



Immunohistochemistry (Formalin/PFA-fixed paraffin-embedded sections) analysis of human brain tissue labelling pan Synuclein with ab15534.

Immunohistochemistry (Formalin/PFA-fixed paraffin-embedded sections) - Anti-pan Synuclein antibody (ab15534)



Human brain stained with ab15534

Immunohistochemistry (Formalin/PFA-fixed paraffin-embedded sections) - Anti-pan Synuclein antibody (ab15534)

**Please note:** All products are "FOR RESEARCH USE ONLY AND ARE NOT INTENDED FOR DIAGNOSTIC OR THERAPEUTIC USE"

### **Our Abpromise to you: Quality guaranteed and expert technical support**

---

- Replacement or refund for products not performing as stated on the datasheet
- Valid for 12 months from date of delivery
- Response to your inquiry within 24 hours
- We provide support in Chinese, English, French, German, Japanese and Spanish
- Extensive multi-media technical resources to help you
- We investigate all quality concerns to ensure our products perform to the highest standards

If the product does not perform as described on this datasheet, we will offer a refund or replacement. For full details of the Abpromise, please visit <http://www.abcam.co.jp/abpromise> or contact our technical team.

### **Terms and conditions**

---

- Guarantee only valid for products bought direct from Abcam or one of our authorized distributors