

Product datasheet

Anti-ketohexokinase antibody ab38281

2 Abreviews 2 References 画像数 3

製品の概要

|              |   |
|--------------|---|
| 製品名          | Anti-ketohexokinase antibody  |
| 製品の詳細        | Rabbit polyclonal to ketohexokinase   |
| 由来種          | Rabbit  |
| アプリケーション     | 適用あり: IHC-P, ELISA, WB, ICC/IF  |
| 種交差性         | 交差種: Mouse, Human   |
| 免疫原          | Synthetic peptide conjugated to KLH selected within the last 50 aa of human ketohexokinase.   |
| ポジティブ・コントロール | Mouse kidney tissue lysate. IHC-P: FFPE human kidney tissue sections. IF/ICC: HeLa cell line. |

製品の特性

|           |  |
|-----------|--|
| 製品の状態     | Liquid   |
| 保存方法      | Shipped at 4°C. Store at +4°C short term (1-2 weeks). Upon delivery aliquot. Store at -20°C long term.   |
| バッファー     | Preservative: 0.09% Sodium Azide<br>Constituents: PBS  |
| 精製度       | Protein G purified   |
| 特記事項 (精製) | This antibody is purified through a protein G column, eluted out with both high and low pH buffers, neutralized immediately after elution then followed by dialysis against PBS. |
| ポリ/モノ     | ポリクローナル  |
| アイソタイプ    | IgG  |

アプリケーション

Our [Abpromise guarantee](#) covers the use of **ab38281** in the following tested applications.

The application notes include recommended starting dilutions; optimal dilutions/concentrations should be determined by the end user.

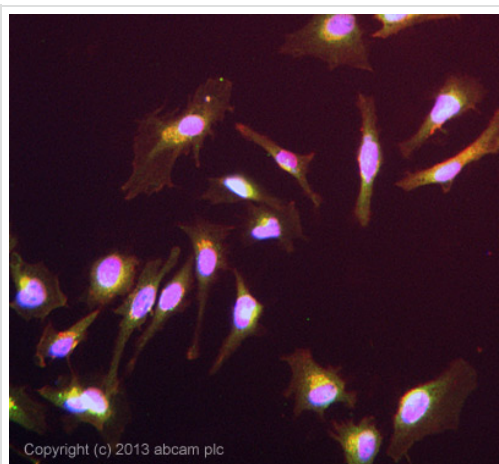
| アプリケーション | Abreviews | 特記事項   |
|----------|-----------|--|
| IHC-P    |           | Use a concentration of 1 µg/ml. Perform heat mediated antigen retrieval with citrate buffer pH 6 before commencing with IHC staining protocol. |

| アプリケーション | Abreviews | 特記事項   |
|----------|-----------|--|
| ELISA    |           | 1/1000.  |
| WB       |           | 1/100 - 1/500. Predicted molecular weight: 33 kDa. |
| ICC/IF   |           | Use a concentration of 5 µg/ml.                    |

## ターゲット情報

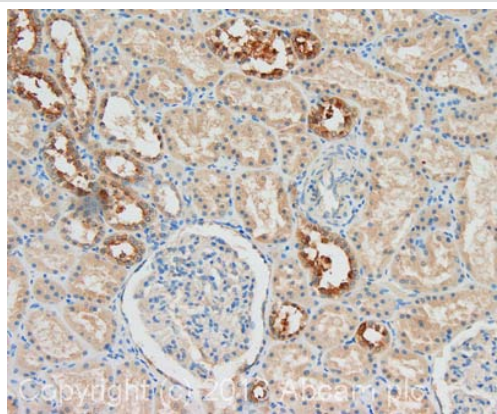
|       |  |
|-------|--|
| 組織特異性 | Most abundant in liver, kidney, gut, spleen and pancreas. Low levels also found in adrenal, muscle, brain and eye.           |
| パスウェイ | Carbohydrate metabolism; fructose metabolism.  |
| 関連疾患  | Defects in KHK are the cause of fructosuria (FRUCT) [MIM:229800]. Fructosuria is a benign defect of intermediary metabolism. |
| 配列類似性 | Belongs to the carbohydrate kinase pfkB family.  |

## 画像



Immunocytochemistry/ Immunofluorescence - Anti-ketohexokinase antibody (ab38281)

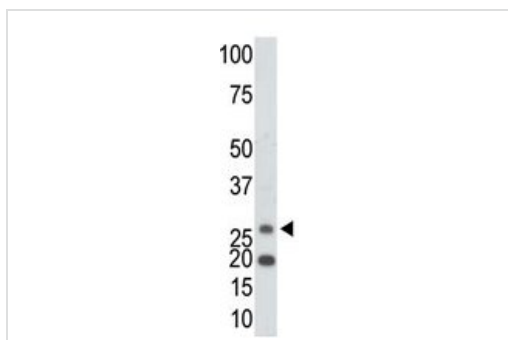
ICC/IF image of ab38281 stained HeLa cells. The cells were 4% formaldehyde fixed (10 min) and then incubated in 1%BSA / 10% normal goat serum / 0.3M glycine in 0.1% PBS-Tween for 1h to permeabilise the cells and block non-specific protein-protein interactions. The cells were then incubated with the antibody (ab38281, 5µg/ml) overnight at +4°C. The secondary antibody (green) was [ab96899](#), DyLight® 488 goat anti-rabbit IgG (H+L) used at a 1/250 dilution for 1h. Alexa Fluor® 594 WGA was used to label plasma membranes (red) at a 1/200 dilution for 1h. DAPI was used to stain the cell nuclei (blue) at a concentration of 1.43µM.



Immunohistochemistry (Formalin/PFA-fixed paraffin-embedded sections) - Anti-ketohehexokinase antibody (ab38281)

IHC image of ketohehexokinase staining in human kidney formalin fixed paraffin embedded tissue section, performed on a Leica Bond system using the standard protocol F. The section was pre-treated using heat mediated antigen retrieval with sodium citrate buffer (pH6, epitope retrieval solution 1) for 20 mins. The section was then incubated with ab38281, 1 µg/ml, for 15 mins at room temperature and detected using an HRP conjugated compact polymer system. DAB was used as the chromogen. The section was then counterstained with haematoxylin and mounted with DPX.

For other IHC staining systems (automated and non-automated) customers should optimize variable parameters such as antigen retrieval conditions, primary antibody concentration and antibody incubation times.



Western blot - Anti-ketohehexokinase antibody (ab38281)

Anti-ketohehexokinase antibody (ab38281) at 1/100 dilution + Mouse kidney tissue lysate

**Predicted band size:** 33 kDa

**Observed band size:** 30 kDa

**Additional bands at:** 19 kDa. We are unsure as to the identity of these extra bands.

**Please note:** All products are "FOR RESEARCH USE ONLY AND ARE NOT INTENDED FOR DIAGNOSTIC OR THERAPEUTIC USE"

### Our Abpromise to you: Quality guaranteed and expert technical support

- Replacement or refund for products not performing as stated on the datasheet
- Valid for 12 months from date of delivery
- Response to your inquiry within 24 hours
- We provide support in Chinese, English, French, German, Japanese and Spanish
- Extensive multi-media technical resources to help you
- We investigate all quality concerns to ensure our products perform to the highest standards

If the product does not perform as described on this datasheet, we will offer a refund or replacement. For full details of the Abpromise, please visit <http://www.abcam.co.jp/abpromise> or contact our technical team.

## Terms and conditions

---

- Guarantee only valid for products bought direct from Abcam or one of our authorized distributors