


## Product datasheet

# Anti-eIF4EBP1 antibody ab2606

★★★★★ 2 Abreviews 11 References 画像数 5

### 製品の概要

製品名	Anti-eIF4EBP1 antibody
製品の詳細	Rabbit polyclonal to eIF4EBP1
由来種	Rabbit
特異性	This antibody detects alpha (weakly), beta and gamma (strongly) isoforms of eIF-4EBP1.
アプリケーション	<b>適用あり:</b> EMSA, IHC-P, WB, IP
種交差性	<b>交差種:</b> Mouse, Rat, Human, Pig <b>交差が予測される動物種:</b> Rabbit, Chimpanzee, Rhesus monkey, Gorilla, Chinese hamster, Orangutan 
免疫原	Synthetic peptide (Human) - which represents a portion of human eIF-4EBP1 encoded in part by exons 2 and 3.
ポジティブ・コントロール	RINm5F insulinoma cell lysate

### 製品の特性

製品の状態	Liquid
保存方法	Shipped at 4°C. Upon delivery aliquot and store at -20°C. Avoid freeze / thaw cycles.
バッファー	Preservative: 0.1% Sodium Azide Constituents: 8mM PBS, 60mM Citrate, 150mM Tris, pH 7-8
特記事項 (精製)	Affinity purified using the immunising peptide immobilized on solid support.
ポリモノ	ポリクローナル
アイソタイプ	IgG

### アプリケーション

Our [Abpromise guarantee](#) covers the use of **ab2606** in the following tested applications.

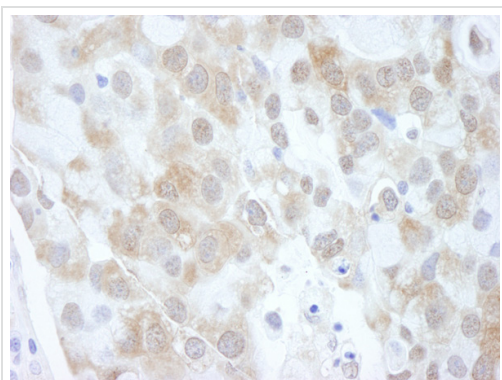
The application notes include recommended starting dilutions; optimal dilutions/concentrations should be determined by the end user.

アプリケーション	Abreviews	特記事項
EMSA		Use at an assay dependent concentration. PubMed: 17074885
IHC-P		1/5000 - 1/20000. Perform heat mediated antigen retrieval with citrate buffer pH 6 before commencing with IHC staining protocol.
WB	★★★★★	1/1000 - 1/6000. Detects a band of approximately 20-25 kDa (predicted molecular weight: 13 kDa).
IP		Use a concentration of 5 µg/ml.

## ターゲット情報

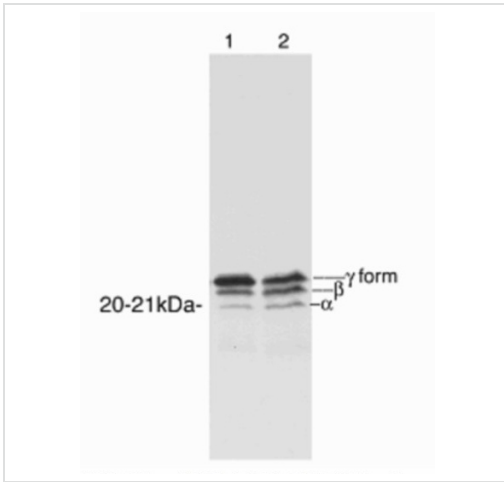
機能	Regulates eIF4E activity by preventing its assembly into the eIF4F complex. Mediates the regulation of protein translation by hormones, growth factors and other stimuli that signal through the MAP kinase and mTORC1 pathways.
配列類似性	Belongs to the eIF4E-binding protein family.
翻訳後修飾	Phosphorylated on serine and threonine residues in response to insulin, EGF and PDGF. Phosphorylation at Thr-37, Thr-46, Ser-65 and Thr-70 is regulated by mTORC1. Phosphorylated upon DNA damage, probably by ATM or ATR.

## 画像



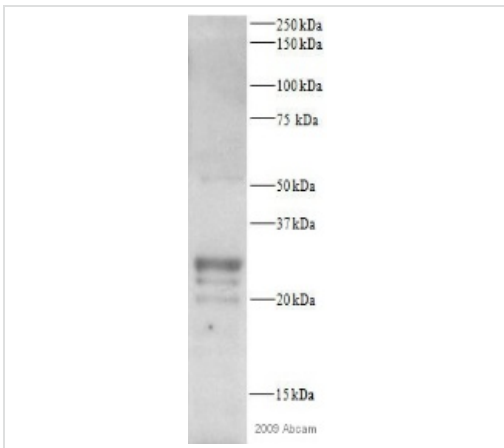
Immunohistochemistry (Formalin/PFA-fixed paraffin-embedded sections) analysis of human breast carcinoma tissue labelling eIF4EBP1 with ab2606 at 1/20000 (0.05µg/ml). Detection: DAB.

Immunohistochemistry (Formalin/PFA-fixed paraffin-embedded sections) - Anti-eIF4EBP1 antibody (ab2606)



Western blot - eIF4EBP1 antibody (ab2606)

Ab2606 at a 1:4000 dilution staining alpha, beta and gamma isoforms of eIF-4EBP1 in 100µg of RINm5F insulinoma cell lysate after exposure to high (lane 1) and low (lane 2) concentrations of leucine. Ab2606 at a 1:4000 dilution staining alpha, beta and gamma isoforms of eIF-4EBP1 in 100µg of RINm5F insulinoma cell lysate after exposure to high (lane 1) and low (lane 2) concentrations of leucine.



Western blot - eIF4EBP1 antibody (ab2606)

This image is a courtesy of Anonymous Abreview

Anti-eIF4EBP1 antibody (ab2606) at 1/500 dilution + Lysate prepared from human HT1080 cell line at 10 µg

**Secondary**

HRP-conjugated donkey polyclonal to rabbit IgG at 1/5000 dilution

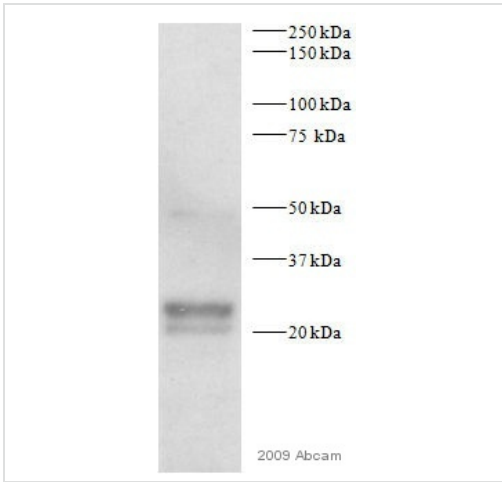
Developed using the ECL technique.

Performed under reducing conditions.

**Predicted band size:** 13 kDa

**Observed band size:** 20,22,25 kDa

**Exposure time:** 12 minutes



Western blot - eIF4EBP1 antibody (ab2606)

This image is a courtesy of Anonymous Abreview

Anti-eIF4EBP1 antibody (ab2606) at 1/500 dilution + Lysate prepared from mouse NIH 3T3 cells at 10 µg

### Secondary

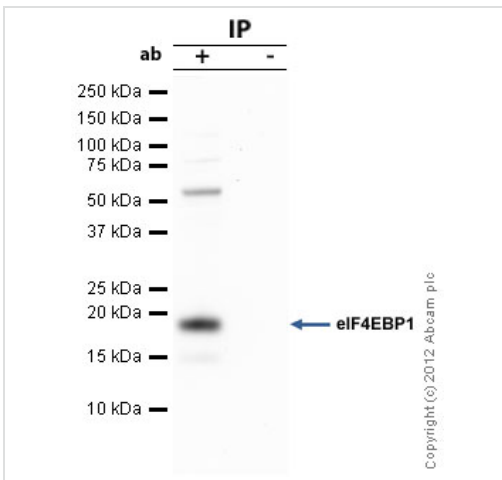
HRP-conjugated donkey polyclonal to rabbit IgG at 1/5000 dilution

Performed under reducing conditions.

**Predicted band size:** 13 kDa

**Observed band size:** 22,25 kDa

**Exposure time:** 12 minutes



Immunoprecipitation - Anti-eIF4EBP1 antibody (ab2606)

eIF4EBP1 was immunoprecipitated using 0.5mg NIH3T3 whole cell extract, 5µg of Rabbit polyclonal to eIF4EBP1 and 50µl of protein G magnetic beads (+). No antibody was added to the control (-).

The antibody was incubated under agitation with Protein G beads for 10min, NIH3T3 whole cell extract lysate diluted in RIPA buffer was added to each sample and incubated for a further 10min under agitation.

Proteins were eluted by addition of 40µl SDS loading buffer and incubated for 10min at 70°C; 10µl of each sample was separated on a SDS PAGE gel, transferred to a nitrocellulose membrane, blocked with 5% BSA and probed with ab2606.

Secondary: Clean-Blot IP Detection Reagent (HRP) at 1/500 dilution.

Band: 20kDa; eIF4EBP1

**Please note:** All products are "FOR RESEARCH USE ONLY AND ARE NOT INTENDED FOR DIAGNOSTIC OR THERAPEUTIC USE"

### Our Promise to you: Quality guaranteed and expert technical support

- Replacement or refund for products not performing as stated on the datasheet
- Valid for 12 months from date of delivery
- Response to your inquiry within 24 hours

- We provide support in Chinese, English, French, German, Japanese and Spanish
- Extensive multi-media technical resources to help you
- We investigate all quality concerns to ensure our products perform to the highest standards

If the product does not perform as described on this datasheet, we will offer a refund or replacement. For full details of the Abpromise, please visit <http://www.abcam.co.jp/abpromise> or contact our technical team.

### **Terms and conditions**

---

- Guarantee only valid for products bought direct from Abcam or one of our authorized distributors