

Product datasheet

Anti-eIF4B antibody [EP2299Y] ab68474

RabMAb[®]

★★★★★ 1 Abreviews 1 References 画像数 2

製品の概要

| | |
|--------------|--|
| 製品名 | Anti-eIF4B antibody [EP2299Y] |
| 製品の詳細 | Rabbit monoclonal [EP2299Y] to eIF4B |
| 由来種 | Rabbit |
| アプリケーション | 適用あり: ICC/IF, WB, IHC-P, Flow Cyt 適用なし: IP |
| 種交差性 | 交差種: Human |
| 免疫原 | A synthetic peptide corresponding to residues on the C-terminus of human eIF4B. |
| ポジティブ・コントロール | HeLa cell lysate, human prostate adenocarcinoma tissue. |
| 特記事項 | Mouse, Rat: We have preliminary internal testing data to indicate this antibody may not react with these species. Please contact us for more information. Our RabMAb [®] technology is a patented hybridoma-based technology for making rabbit monoclonal antibodies. For details on our patents, please refer to RabMAb[®] patents |

製品の特性

| | |
|--------|---|
| 製品の状態 | Liquid |
| 保存方法 | Shipped at 4°C. Upon delivery aliquot and store at -20°C. Avoid freeze / thaw cycles. |
| バッファー | pH: 7.40 Preservative: 0.01% Sodium azide Constituents: 50% Glycerol, 0.05% BSA |
| 精製度 | Tissue culture supernatant |
| ポリ/モノ | モノクローナル |
| クローン名 | EP2299Y |
| アイソタイプ | IgG |

アプリケーション

Our [Abpromise guarantee](#) covers the use of **ab68474** in the following tested applications.

The application notes include recommended starting dilutions; optimal dilutions/concentrations should be determined by the end user.

| アプリケーション | Abreviews | 特記事項 |
|----------|-----------|--|
| ICC/IF | ★★★★★ | 1/100 - 1/250. |
| WB | | 1/200000. Detects a band of approximately 90 kDa (predicted molecular weight: 69 kDa). |
| IHC-P | | 1/100 - 1/250. Perform heat mediated antigen retrieval before commencing with IHC staining protocol. |
| Flow Cyt | | 1/20. ab172730 - Rabbit monoclonal IgG, is suitable for use as an isotype control with this antibody. |

追加情報 Is unsuitable for IP.

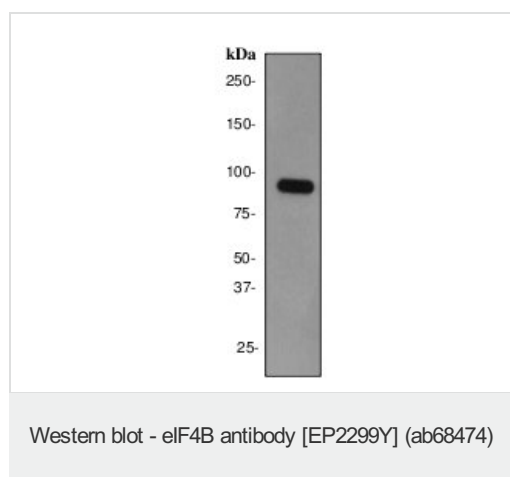
ターゲット情報

機能 Required for the binding of mRNA to ribosomes. Functions in close association with EIF4-F and EIF4-A. Binds near the 5'-terminal cap of mRNA in presence of EIF-4F and ATP. Promotes the ATPase activity and the ATP-dependent RNA unwinding activity of both EIF4-A and EIF4-F.

配列類似性 Contains 1 RRM (RNA recognition motif) domain.

翻訳後修飾 Phosphorylated at Ser-422 by RPS6KA1 and RPS6KB1; phosphorylation enhances the affinity of EIF4B for the EIF3 complex.

画像



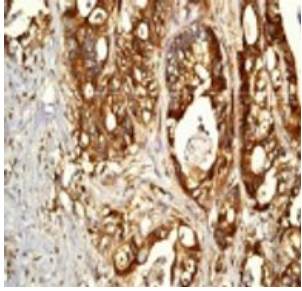
Anti-eIF4B antibody [EP2299Y] (ab68474) at
1/200000 dilution + HeLa cell lysate at 10 µg

Secondary

HRP conjugated Goat anti-rabbit. at 1/2000
dilution

Predicted band size: 69 kDa

Observed band size: 90 kDa



Human prostate adenocarcinoma stained with ab68474 at 1/100 dilution.

Immunohistochemistry (Formalin/PFA-fixed paraffin-embedded sections) - Anti-eIF4B antibody [EP2299Y] (ab68474)

Please note: All products are "FOR RESEARCH USE ONLY AND ARE NOT INTENDED FOR DIAGNOSTIC OR THERAPEUTIC USE"

Our Abpromise to you: Quality guaranteed and expert technical support

- Replacement or refund for products not performing as stated on the datasheet
- Valid for 12 months from date of delivery
- Response to your inquiry within 24 hours
- We provide support in Chinese, English, French, German, Japanese and Spanish
- Extensive multi-media technical resources to help you
- We investigate all quality concerns to ensure our products perform to the highest standards

If the product does not perform as described on this datasheet, we will offer a refund or replacement. For full details of the Abpromise, please visit <http://www.abcam.co.jp/abpromise> or contact our technical team.

Terms and conditions

- Guarantee only valid for products bought direct from Abcam or one of our authorized distributors