

Product datasheet

Anti-c-Jun antibody ab31367

2 References [画像数 2](#)

製品の概要

製品名	Anti-c-Jun antibody
製品の詳細	Rabbit polyclonal to c-Jun
由来種	Rabbit
特異性	ab31367 detects endogenous levels of c-Jun protein around Serine 73.
アプリケーション	適用あり: IHC-Fr, WB, IHC-P, ELISA
種交差性	交差種: Mouse, Rat, Human
免疫原	Synthetic peptide corresponding to Human c-Jun. Range of aa 40-89 Synthetic non-phosphopeptide derived from human c-Jun around the phosphorylation site of Serine 73. Database link: P05412
ポジティブ・コントロール	IHC: breast carcinoma WB: HeLa cells extract

製品の特性

製品の状態	Liquid
保存方法	Shipped at 4°C. Upon delivery aliquot and store at -20°C. Avoid freeze / thaw cycles.
バッファー	Preservative: 0.02% Sodium Azide Constituents: 50% Glycerol, PBS (without Mg ²⁺ and Ca ²⁺), 150mM Sodium chloride, pH 7.4
精製度	Immunogen affinity purified
ポリ/モノ	ポリクローナル
アイソタイプ	IgG

アプリケーション

Our [Abpromise guarantee](#) covers the use of **ab31367** in the following tested applications.

The application notes include recommended starting dilutions; optimal dilutions/concentrations should be determined by the end user.

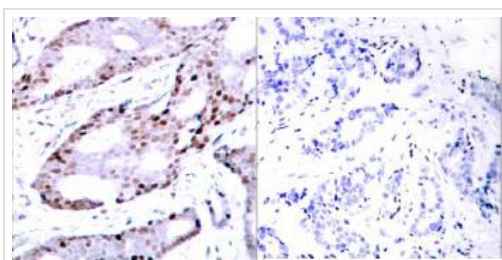
アプリケーション	Abreviews	特記事項
IHC-Fr		Use at an assay dependent concentration. PubMed: 22615549
WB		1/500 - 1/1000. Detects a band of approximately 42 kDa (predicted molecular weight: 36 kDa).

アプリケーション	Abreviews	特記事項
IHC-P		Use at an assay dependent concentration.
ELISA		1/10000.

ターゲット情報

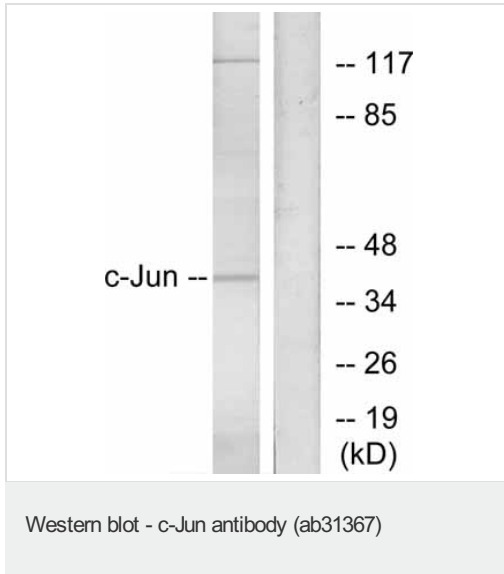
機能	Transcription factor that recognizes and binds to the enhancer heptamer motif 5'-TGA[CG]TCA-3'. Promotes activity of NR5A1 when phosphorylated by HIPK3 leading to increased steroidogenic gene expression upon cAMP signaling pathway stimulation. Involved in activated KRAS-mediated transcriptional activation of USP28 in colorectal cancer (CRC) cells (PubMed:24623306). Binds to the USP28 promoter in colorectal cancer (CRC) cells (PubMed:24623306).
配列類似性	Belongs to the bZIP family. Jun subfamily. Contains 1 bZIP (basic-leucine zipper) domain.
翻訳後修飾	Ubiquitinated by the SCF(FBXW7), leading to its degradation. Ubiquitination takes place following phosphorylation, that promotes interaction with FBXW7. Phosphorylated by CaMK4 and PRKDC; phosphorylation enhances the transcriptional activity. Phosphorylated by HIPK3. Phosphorylated by DYRK2 at Ser-243; this primes the protein for subsequent phosphorylation by GSK3B at Thr-239. Phosphorylated at Thr-239, Ser-243 and Ser-249 by GSK3B; phosphorylation reduces its ability to bind DNA. Phosphorylated by PAK2 at Thr-2, Thr-8, Thr-89, Thr-93 and Thr-286 thereby promoting JUN-mediated cell proliferation and transformation. Phosphorylated by PLK3 following hypoxia or UV irradiation, leading to increase DNA-binding activity. Acetylated at Lys-271 by EP300.
細胞内局在	Nucleus.

画像



ab31367 at 1:100, Immunohistochemical analysis of paraffin-embedded breast carcinoma. Left: c-Jun antibody, Right: Preincubated with synthesized peptide.

Immunohistochemistry (Paraffin-embedded sections)
- c-Jun antibody (ab31367)



All lanes : Anti-c-Jun antibody (ab31367) at 1/1000 dilution

Lane 1 : HeLa cells lysate, preincubated with immunogen (synthetic non-phosphopeptide)

Lane 2 : HeLa cells lysate

Predicted band size: 36 kDa

Please note: All products are "FOR RESEARCH USE ONLY AND ARE NOT INTENDED FOR DIAGNOSTIC OR THERAPEUTIC USE"

Our Abpromise to you: Quality guaranteed and expert technical support

- Replacement or refund for products not performing as stated on the datasheet
- Valid for 12 months from date of delivery
- Response to your inquiry within 24 hours
- We provide support in Chinese, English, French, German, Japanese and Spanish
- Extensive multi-media technical resources to help you
- We investigate all quality concerns to ensure our products perform to the highest standards

If the product does not perform as described on this datasheet, we will offer a refund or replacement. For full details of the Abpromise, please visit <http://www.abcam.co.jp/abpromise> or contact our technical team.

Terms and conditions

- Guarantee only valid for products bought direct from Abcam or one of our authorized distributors