


Product datasheet

Anti-beta Tubulin antibody ab97872

画像数 2

製品の概要

製品名	Anti-beta Tubulin antibody
製品の詳細	Rabbit polyclonal to beta Tubulin
由来種	Rabbit
アプリケーション	適用あり: WB, ICC/IF
種交差性	交差種: Human 交差が予測される動物種: Mouse, Cow, Zebrafish 
免疫原	Recombinant fragment, corresponding to a region within amino acids 238-439 of Human beta Tubulin (NP_821133).
ポジティブ・コントロール	293T and H1299 whole cell lysates; HeLa cells; A431, HepG2, Molt-4 and Raji cell lines

法規制情報

医薬用外毒物

製品の特性

製品の状態	Liquid
保存方法	Shipped at 4°C. Upon delivery aliquot. Store at -20°C or -80°C. Avoid freeze / thaw cycle.
バッファー	Preservative: 0.01% Thimerosal (merthiolate) Constituents: 40% Glycerol, 1X PBS, pH 7.0
精製度	Immunogen affinity purified
ポリ/モノ	ポリクローナル
アイソタイプ	IgG

アプリケーション

Our [Abpromise guarantee](#) covers the use of **ab97872** in the following tested applications.

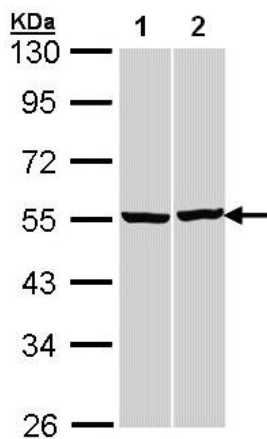
The application notes include recommended starting dilutions; optimal dilutions/concentrations should be determined by the end user.

アプリケーション	Abreviews	特記事項
WB		1/500 - 1/3000. Predicted molecular weight: 50 kDa.
ICC/IF		1/100 - 1/200.

ターゲット情報

機能	Tubulin is the major constituent of microtubules. It binds two moles of GTP, one at an exchangeable site on the beta chain and one at a non-exchangeable site on the alpha chain.
組織特異性	Ubiquitously expressed with highest levels in spleen, thymus and immature brain.
関連疾患	Cortical dysplasia, complex, with other brain malformations 6 Skin creases, congenital symmetric circumferential, 1
配列類似性	Belongs to the tubulin family.
ドメイン	The highly acidic C-terminal region may bind cations such as calcium.
翻訳後修飾	Some glutamate residues at the C-terminus are polyglutamylated, resulting in polyglutamate chains on the gamma-carboxyl group (PubMed:26875866). Polyglutamylation plays a key role in microtubule severing by spastin (SPAST). SPAST preferentially recognizes and acts on microtubules decorated with short polyglutamate tails: severing activity by SPAST increases as the number of glutamates per tubulin rises from one to eight, but decreases beyond this glutamylation threshold (PubMed:26875866). Some glutamate residues at the C-terminus are monoglycylated but not polyglycylated due to the absence of functional TLL10 in human. Monoglycylation is mainly limited to tubulin incorporated into axonemes (cilia and flagella). Both polyglutamylation and monoglycylation can coexist on the same protein on adjacent residues, and lowering glycylation levels increases polyglutamylation, and reciprocally. The precise function of monoglycylation is still unclear. Phosphorylated on Ser-172 by CDK1 during the cell cycle, from metaphase to telophase, but not in interphase. This phosphorylation inhibits tubulin incorporation into microtubules.
細胞内局在	Cytoplasm, cytoskeleton.

画像



Western blot - Anti-beta Tubulin antibody (ab97872)

All lanes : Anti-beta Tubulin antibody

(ab97872) at 1/3000 dilution

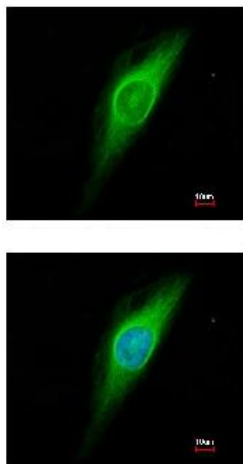
Lane 1 : 293T whole cell lysate

Lane 2 : H1299 whole cell lysate

Lysates/proteins at 30 µg per lane.

Predicted band size: 50 kDa

10% SDS PAGE



Immunocytochemistry/ Immunofluorescence - Anti-beta Tubulin antibody (ab97872)

Immunofluorescence analysis of paraformaldehyde-fixed HeLa cells, using ab97872 at 1/200 dilution. Lower image is merged with DNA probe.

Please note: All products are "FOR RESEARCH USE ONLY AND ARE NOT INTENDED FOR DIAGNOSTIC OR THERAPEUTIC USE"

Our Abpromise to you: Quality guaranteed and expert technical support

- Replacement or refund for products not performing as stated on the datasheet
- Valid for 12 months from date of delivery
- Response to your inquiry within 24 hours
- We provide support in Chinese, English, French, German, Japanese and Spanish
- Extensive multi-media technical resources to help you
- We investigate all quality concerns to ensure our products perform to the highest standards

If the product does not perform as described on this datasheet, we will offer a refund or replacement. For full details of the Abpromise, please visit <http://www.abcam.co.jp/abpromise> or contact our technical team.

Terms and conditions

- Guarantee only valid for products bought direct from Abcam or one of our authorized distributors