

Anti-beta Actin antibody - Loading Control ab8229

★★★★☆ 11 Abreviews 88 References 画像数 2

製品の概要

製品名	Anti-beta Actin antibody - Loading Control
製品の詳細	Goat polyclonal to beta Actin - Loading Control
由来種	Goat
特異性	This antibody detects a single clean band at just above 40kD that corresponds to beta Actin. Please note this antibody is raised against the b-nonmuscle isoform and does not stain adult cardiac and skeletal muscles, except for traces due to contaminations of the sample with non-muscle cells, or if embryonic tissue is being used. The immunogen used for this product shares 77% homology with Gamma actin/actin cytoplasmic 2. Cross-reactivity with this protein has not been confirmed experimentally.
アプリケーション	適用あり: WB
種交差性	交差種: Mouse, Rat, Rabbit, Goat, Chicken, Cow, Dog, Human, Fish, Monkey, Chinese hamster 交差が予測される動物種: a wide range of other species ▲
免疫原	Synthetic peptide (the amino acid sequence is considered to be commercially sensitive) within Human beta Actin aa 1-100 conjugated to Keyhole Limpet Haemocyanin (KLH). The exact sequence is proprietary. (Peptide available as ab13772)
ポジティブ・コントロール	WB: HeLa, NIH3T3, PC12 and CHOK1 whole cell lysates.
特記事項	This antibody has been designed for use as a loading control and is ideal for this purpose.

製品の特性

製品の状態	Liquid
保存方法	Shipped at 4°C. Store at +4°C short term (1-2 weeks). Upon delivery aliquot. Store at -20°C or -80°C. Avoid freeze / thaw cycle.
バッファー	Preservative: 0.025% Sodium azide Constituent: PBS This product may contain up to 3% BSA depending on the batch. For specific batch formulations please contact us.
精製度	Immunogen affinity purified
一次抗体 備考	This antibody has been designed for use as a loading control and is ideal for this purpose.

ポリモノ
アイソタイプ

ポリクローナル
IgG

アプリケーション

Our [Abpromise guarantee](#) covers the use of **ab8229** in the following tested applications.

The application notes include recommended starting dilutions; optimal dilutions/concentrations should be determined by the end user.

アプリケーション	Abreviews	特記事項
WB	★★★★☆	1/500. Detects a band of approximately 42 kDa (predicted molecular weight: 42 kDa). Can be blocked with Human beta Actin peptide (ab13772) .

ターゲット情報

機能	Actins are highly conserved proteins that are involved in various types of cell motility and are ubiquitously expressed in all eukaryotic cells.
関連疾患	Defects in ACTB are a cause of dystonia juvenile-onset (DYTJ) [MIM:607371]. DYTJ is a form of dystonia with juvenile onset. Dystonia is defined by the presence of sustained involuntary muscle contraction, often leading to abnormal postures. DYTJ patients manifest progressive, generalized, dopa-unresponsive dystonia, developmental malformations and sensory hearing loss.
配列類似性	Belongs to the actin family.
翻訳後修飾	ISGylated.
細胞内局在	Cytoplasm > cytoskeleton. Localized in cytoplasmic mRNP granules containing untranslated mRNAs.

画像



All lanes : Anti-beta Actin antibody - Loading

Control (ab8229) at 1/1000 dilution

Lane 1 : HeLa whole cell (Human)

Lane 2 : 3T3 cell (Mouse)

Lane 3 : Rabbit Liver

Lane 4 : MDCK cell (Dog)

Lane 5 : EBTr cell (Cow)

Lane 6 : SL-29 cell (Chicken)

Lane 7 : CHO cell (Chinese Hamster)

Lysates/proteins at 20 µg per lane.

Secondary

All lanes : Rabbit Anti-Goat IgG H&L (HRP)

(ab6741) at 1/5000 dilution

Developed using the ECL technique.

Performed under reducing conditions.

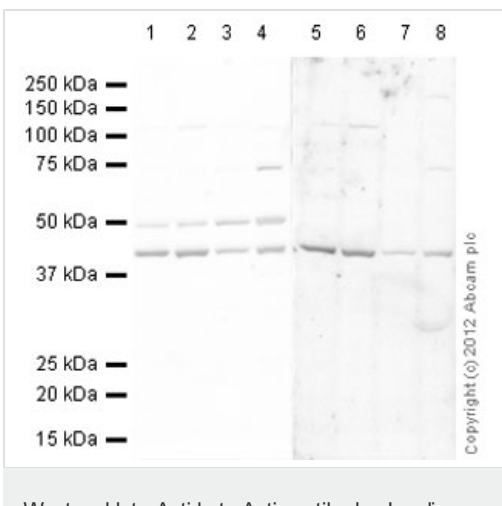
Predicted band size: 42 kDa

Observed band size: 42 kDa

Exposure time: 5 minutes

Secondary antibody - rabbit [anti-goat HRP](#)

(ab6741)



Lanes 1-4 : Anti-beta Actin antibody -

Loading Control (ab8229) at 1 µg/ml (Blocked with 5% BSA.)

Lanes 5-8 : Anti-beta Actin antibody -

Loading Control (ab8229) at 1 µg/ml (Blocked with 3% Milk.)

Lane 1 : HeLa (Human epithelial carcinoma cell line) Whole Cell Lysate

Lanes 2 & 6 : NIH 3T3 (Mouse embryonic fibroblast cell line) Whole Cell Lysate

Lanes 3 & 7 : PC12 (Rat adrenal pheochromocytoma cell line) Whole Cell Lysate

Lanes 4 & 8 : CHO-K1 cell lysate Whole Cell Lysate

Lane 5 : HeLa (Human epithelial carcinoma cell line) Whole Cell Lysate

Lysates/proteins at 10 µg per lane.

Secondary

All lanes : Rabbit polyclonal to Goat IgG - H&L - Pre-Adsorbed (HRP) at 1/3000 dilution

Developed using the ECL technique.

Performed under reducing conditions.

Predicted band size: 42 kDa

Observed band size: 42 kDa

Additional bands at: 48 kDa. We are unsure as to the identity of these extra bands.

Exposure time: 20 minutes

This blot was produced using a 10% Bis-tris gel under the MOPS buffer system. The gel was run at 200V for 50 minutes before being transferred onto a Nitrocellulose membrane at 30V for 70 minutes. The membrane was then blocked for an hour using 5% Bovine Serum Albumin (lanes 1-4) or 3% milk (lanes 5-8) before being incubated with ab8229 overnight at 4°C. Antibody binding was detected using an anti-Goat antibody conjugated to HRP, and visualised using ECL development solution. A non-specific band at 50-kDa is observed on western blots of some of our batches of ab8229. We have found that milk blocking is more effective than BSA blocking in eliminating this non-specific binding.

Our Abpromise to you: Quality guaranteed and expert technical support

- Replacement or refund for products not performing as stated on the datasheet
- Valid for 12 months from date of delivery
- Response to your inquiry within 24 hours

- We provide support in Chinese, English, French, German, Japanese and Spanish
- Extensive multi-media technical resources to help you
- We investigate all quality concerns to ensure our products perform to the highest standards

If the product does not perform as described on this datasheet, we will offer a refund or replacement. For full details of the Abpromise, please visit <http://www.abcam.co.jp/abpromise> or contact our technical team.

Terms and conditions

- Guarantee only valid for products bought direct from Abcam or one of our authorized distributors