

Product datasheet

Anti-beta 4 Defensin antibody ab70215

1 References [画像数 1](#)

製品の概要

製品名	Anti-beta 4 Defensin antibody
製品の詳細	Rabbit polyclonal to beta 4 Defensin
アプリケーション	適用あり: WB, Indirect ELISA, Sandwich ELISA
種交差性	交差種: Human
免疫原	Highly pure (>98%) human recombinant full length beta 4 Defensin

製品の特性

製品の状態	Lyophilised:Centrifuge vial prior to opening. Reconstitute in sterile water to a concentration of 0.5 mg/ml. Please note that if you receive this product in liquid form it has already been reconstituted as described and no further reconstitution is necessary.
保存方法	Shipped at 4°C. Upon delivery aliquot and store at -20°C or -80°C. Avoid repeated freeze / thaw cycles.
バッファー	Preservative: None Constituents: PBS, pH 7.2
精製度	Immunogen affinity purified
ポリ/モノ	ポリクローナル
アイソタイプ	IgG

アプリケーション

Our [Abpromise guarantee](#) covers the use of **ab70215** in the following tested applications.

The application notes include recommended starting dilutions; optimal dilutions/concentrations should be determined by the end user.

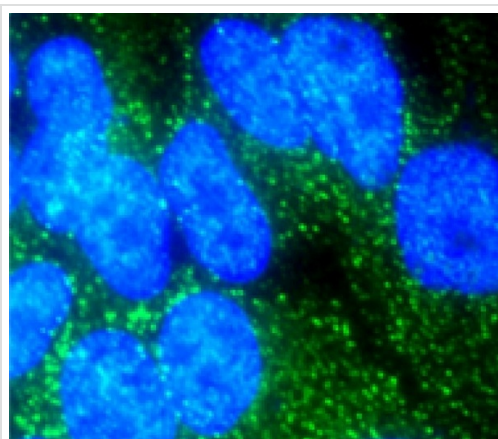
アプリケーション	Abreviews	特記事項
WB		Use a concentration of 0.1 - 0.2 µg/ml. Predicted molecular weight: 8 kDa.
Indirect ELISA		Use a concentration of 0.5 - 2 µg/ml. Can be paired for ELISA with Rabbit polyclonal to beta 4 Defensin (Biotin) (ab70216) .

アプリケーション	Abreviews	特記事項
Sandwich ELISA		Use a concentration of 0.5 - 2 µg/ml. Can be paired for Sandwich ELISA with Rabbit polyclonal to beta 4 Defensin (Biotin) (ab70216) . Capture

ターゲット情報

機能	Has antimicrobial activity. Synergistic effects with lysozyme and DEFB103.
組織特異性	High expression in the testis. Gastric antrum exhibited relatively high levels. A lower expression is observed in uterus and neutrophils thyroid gland, lung, and kidney. No detectable expression in other tissues tested.
配列類似性	Belongs to the beta-defensin family.
細胞内局在	Secreted.

画像



ab70215 staining beta 4 Defensin in the A549 cell line from Human Lung by ICC/IF (Immunocytochemistry/immunofluorescence) treated with cigarette smoke extract. Cells were fixed, permeabilized and blocked. Samples were incubated with primary antibody (1/500) for 1 hour. An Alexa Fluor®488-conjugated secondary antibody was used as the secondary antibody and DAPI used to stain the nuclei.

Immunocytochemistry/ Immunofluorescence - Anti-beta 4 Defensin antibody (ab70215)

Image from Pierson T et al., Tobacco Induced Diseases. 2013;11:10. Fig 2.; doi: 10.1186/1617-9625-11-10. Published by BioMed Central

Please note: All products are "FOR RESEARCH USE ONLY AND ARE NOT INTENDED FOR DIAGNOSTIC OR THERAPEUTIC USE"

Our Abpromise to you: Quality guaranteed and expert technical support

- Replacement or refund for products not performing as stated on the datasheet
- Valid for 12 months from date of delivery
- Response to your inquiry within 24 hours
- We provide support in Chinese, English, French, German, Japanese and Spanish
- Extensive multi-media technical resources to help you
- We investigate all quality concerns to ensure our products perform to the highest standards

If the product does not perform as described on this datasheet, we will offer a refund or replacement. For full details of the Abpromise, please visit <http://www.abcam.co.jp/abpromise> or contact our technical team.

Terms and conditions

- Guarantee only valid for products bought direct from Abcam or one of our authorized distributors