

Product datasheet

Anti-alpha Adducin antibody [EP734Y] ab40760

RabMAb[®]

画像数 3

製品の概要

製品名	Anti-alpha Adducin antibody [EP734Y]
製品の詳細	Rabbit monoclonal [EP734Y] to alpha Adducin
由来種	Rabbit
アプリケーション	適用あり: WB, IHC-P, ICC/IF 適用なし: Flow Cyt or IP
種交差性	交差種: Mouse, Rat, Human
免疫原	Synthetic peptide within Human alpha Adducin (C terminal). The exact sequence is proprietary.
ポジティブ・コントロール	HeLa cell lysate, human lung (IHC-p).
特記事項	Our RabMAb [®] technology is a patented hybridoma-based technology for making rabbit monoclonal antibodies. For details on our patents, please refer to RabMAb[®] patents

製品の特性

製品の状態	Liquid
保存方法	Shipped at 4°C. Upon delivery aliquot and store at -20°C. Avoid freeze / thaw cycles.
バッファー	PBS 49%, Sodium azide 0.01%, Glycerol 50%, BSA 0.05%
精製度	Tissue culture supernatant
ポリ/モノ	モノクローナル
クローン名	EP734Y
アイソタイプ	IgG

アプリケーション

Our [Abpromise guarantee](#) covers the use of **ab40760** in the following tested applications.

The application notes include recommended starting dilutions; optimal dilutions/concentrations should be determined by the end user.

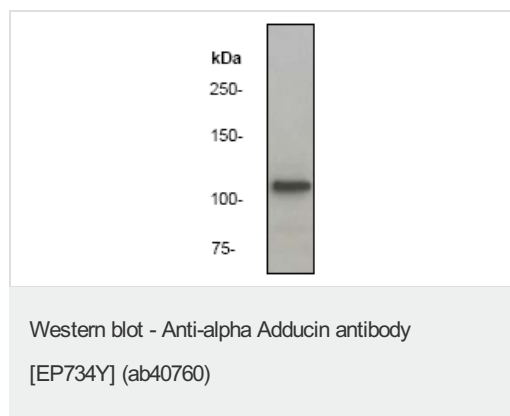
アプリケーション	Abreviews	特記事項
WB		1/5000 - 1/50000. Detects a band of approximately 120 kDa (predicted molecular weight: 120 kDa).
IHC-P		1/250 - 1/500.
ICC/IF		1/250 - 1/500.

追加情報 Is unsuitable for Flow Cyt or IP.

ターゲット情報

機能	Membrane-cytoskeleton-associated protein that promotes the assembly of the spectrin-actin network. Binds to calmodulin.
組織特異性	Expressed in all tissues. Found in much higher levels in reticulocytes than the beta subunit.
配列類似性	Belongs to the aldolase class II family. Adducin subfamily.
ドメイン	Each subunit is comprised of three regions: a NH ₂ -terminal protease-resistant globular head region, a short connecting subdomain, and a protease-sensitive tail region.
細胞内局在	Cytoplasm > cytoskeleton. Cell membrane.

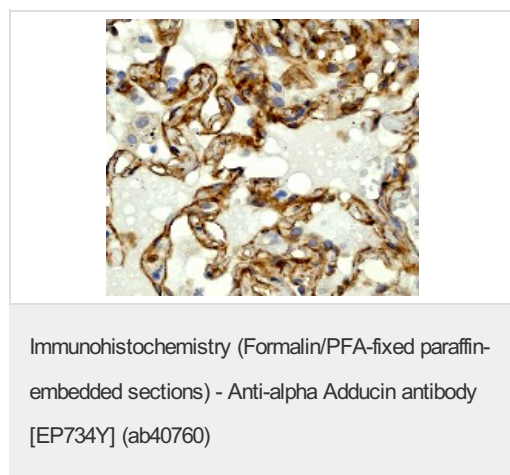
画像



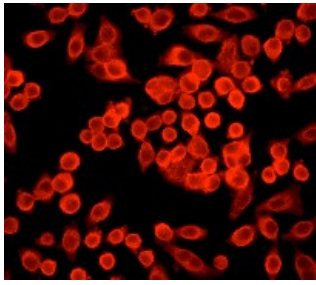
Anti-alpha Adducin antibody [EP734Y] (ab40760) at 1/50000 dilution + HeLa cell lysate at 10 µg

Predicted band size: 120 kDa

Observed band size: 120 kDa



ab40760 (1/250), staining human lung by immunohistochemistry, paraffin embedded tissue.



ab40760, (1/250) staining HeLa cells by immunofluorescence.

Immunocytochemistry/ Immunofluorescence - Anti-alpha Adducin antibody [EP734Y] (ab40760)

Please note: All products are "FOR RESEARCH USE ONLY AND ARE NOT INTENDED FOR DIAGNOSTIC OR THERAPEUTIC USE"

Our Abpromise to you: Quality guaranteed and expert technical support

- Replacement or refund for products not performing as stated on the datasheet
- Valid for 12 months from date of delivery
- Response to your inquiry within 24 hours
- We provide support in Chinese, English, French, German, Japanese and Spanish
- Extensive multi-media technical resources to help you
- We investigate all quality concerns to ensure our products perform to the highest standards

If the product does not perform as described on this datasheet, we will offer a refund or replacement. For full details of the Abpromise, please visit <http://www.abcam.co.jp/abpromise> or contact our technical team.

Terms and conditions

- Guarantee only valid for products bought direct from Abcam or one of our authorized distributors