

Product datasheet

Anti-alpha 1 Antichymotrypsin antibody ab88527

画像数 3

製品の概要

製品名	Anti-alpha 1 Antichymotrypsin antibody
製品の詳細	Mouse polyclonal to alpha 1 Antichymotrypsin
由来種	Mouse
アプリケーション	適用あり: WB, ICC/IF
種交差性	交差種: Human
免疫原	Full length Human alpha 1 Antichymotrypsin protein (NP_001076.2).
ポジティブ・コントロール	WB: HeLa cell lysate and alpha 1 Antichymotrypsin transfected 293T cell lysate IF: HeLa cell

製品の特性

製品の状態	Liquid
保存方法	Shipped at 4°C. Upon delivery aliquot and store at -20°C or -80°C. Avoid repeated freeze / thaw cycles.
バッファー	Preservative: None Constituents: 1X PBS, pH 7.2
精製度	Protein A purified
ポリ/モノ	ポリクローナル
アイソタイプ	IgG

アプリケーション

Our [Abpromise guarantee](#) covers the use of **ab88527** in the following tested applications.

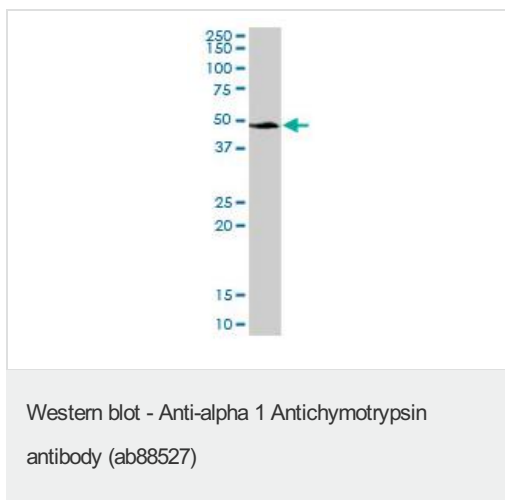
The application notes include recommended starting dilutions; optimal dilutions/concentrations should be determined by the end user.

アプリケーション	Abreviews	特記事項
WB		Use a concentration of 1 µg/ml. Predicted molecular weight: 48 kDa.
ICC/IF		Use a concentration of 10 µg/ml.

ターゲット情報

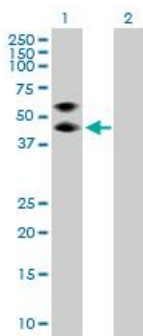
機能	Although its physiological function is unclear, it can inhibit neutrophil cathepsin G and mast cell chymase, both of which can convert angiotensin-1 to the active angiotensin-2.
組織特異性	Plasma. Synthesized in the liver. Like the related alpha-1-antitrypsin, its concentration increases in the acute phase of inflammation or infection. Found in the amyloid plaques from the hippocampus of Alzheimer disease brains.
関連疾患	Defects in SERPINA3 may be a cause of chronic obstructive pulmonary disease (COPD) [MIM:107280].
配列類似性	Belongs to the serpin family.
ドメイン	The reactive center loop (RCL) extends out from the body of the protein and directs binding to the target protease. The protease cleaves the serpin at the reactive site within the RCL, establishing a covalent linkage between the carboxyl group of the serpin reactive site and the serine hydroxyl of the protease. The resulting inactive serpin-protease complex is highly stable.
細胞内局在	Secreted.

画像



Anti-alpha 1 Antichymotrypsin antibody
(ab88527) at 1 µg/ml + HeLa cell lysate at 50
µg

Predicted band size: 48 kDa
Observed band size: 48 kDa



Western blot - Anti-alpha 1 Antichymotrypsin antibody (ab88527)

All lanes : Anti-alpha 1 Antichymotrypsin antibody (ab88527) at 1 µg/ml

Lane 1 : alpha 1 Antichymotrypsin transfected 293T cell lysate

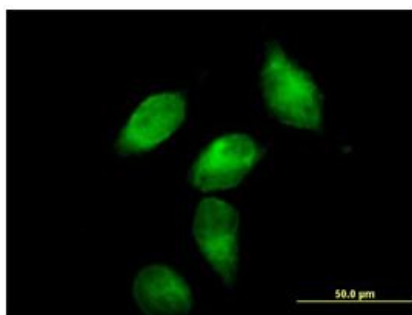
Lane 2 : Non transfected 293T cell lysate

Lysates/proteins at 25 µg per lane.

Predicted band size: 48 kDa

Observed band size: 47 kDa

Additional bands at: 60 kDa. We are unsure as to the identity of these extra bands.



Immunocytochemistry/ Immunofluorescence - Anti-alpha 1 Antichymotrypsin antibody (ab88527)

ab88527 at 10 µg/ml staining alpha 1 Antichymotrypsin in paraformaldehyde fixed, permeabilised HeLa cells, by immunofluorescence.

Please note: All products are "FOR RESEARCH USE ONLY AND ARE NOT INTENDED FOR DIAGNOSTIC OR THERAPEUTIC USE"

Our Abpromise to you: Quality guaranteed and expert technical support

- Replacement or refund for products not performing as stated on the datasheet
- Valid for 12 months from date of delivery
- Response to your inquiry within 24 hours
- We provide support in Chinese, English, French, German, Japanese and Spanish
- Extensive multi-media technical resources to help you
- We investigate all quality concerns to ensure our products perform to the highest standards

If the product does not perform as described on this datasheet, we will offer a refund or replacement. For full details of the Abpromise, please visit <http://www.abcam.co.jp/abpromise> or contact our technical team.

Terms and conditions

- Guarantee only valid for products bought direct from Abcam or one of our authorized distributors