

Product datasheet

Mouse monoclonal [M-1] Anti-Chicken IgM mu chain (FITC)
ab99718

画像数 1

製品の概要

製品名	Mouse monoclonal [M-1] Anti-Chicken IgM mu chain (FITC)
由来種	Mouse
ターゲット生物種	Chicken
アプリケーション	適用あり: Flow Cyt, ICC/IF
標識	FITC. Ex: 493nm, Em: 528nm

製品の特性

製品の状態	Liquid
保存方法	Shipped at 4°C. Store at +4°C.
バッファー	Preservative: 0.1% Sodium Azide Constituents: PBS
精製度	Protein A purified
特記事項(精製)	Chicken peripheral blood mononuclear cells
ポリ/モノ	モノクローナル
クローン名	M-1
アイソタイプ	IgG2b
軽鎖の種類	kappa

アプリケーション

Our [Abpromise guarantee](#) covers the use of **ab99718** in the following tested applications.

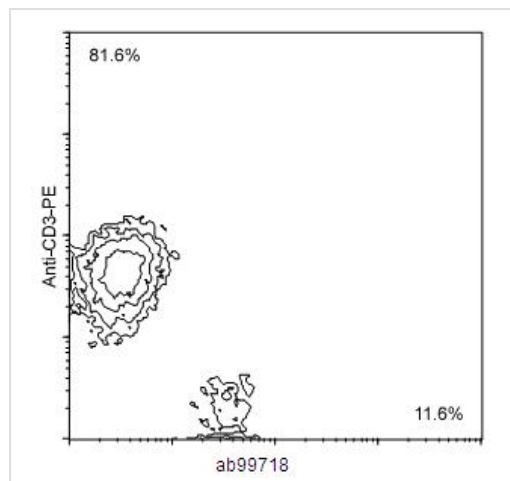
The application notes include recommended starting dilutions; optimal dilutions/concentrations should be determined by the end user.

アプリケーション	Abreviews	特記事項
Flow Cyt		Use 1µg for 10 ⁶ cells. ab18427 - Mouse monoclonal IgG2b, is suitable for use as an isotype control with this antibody.

ICC/IF

Use 1µg for 10⁶ cells.

画像



Flow Cytometry - Mouse monoclonal [M-1] Anti-Chicken IgM mu chain (FITC) (ab99718)

Chicken peripheral blood mononuclear cells were doublestained with ab99718 and R-PE conjugated mouse anti chicken CD3. Small lymphocytes were then gated and analyzed on a flow cytometer.

Please note: All products are "FOR RESEARCH USE ONLY AND ARE NOT INTENDED FOR DIAGNOSTIC OR THERAPEUTIC USE"

Our Abpromise to you: Quality guaranteed and expert technical support

- Replacement or refund for products not performing as stated on the datasheet
- Valid for 12 months from date of delivery
- Response to your inquiry within 24 hours
- We provide support in Chinese, English, French, German, Japanese and Spanish
- Extensive multi-media technical resources to help you
- We investigate all quality concerns to ensure our products perform to the highest standards

If the product does not perform as described on this datasheet, we will offer a refund or replacement. For full details of the Abpromise, please visit <http://www.abcam.co.jp/abpromise> or contact our technical team.

Terms and conditions

- Guarantee only valid for products bought direct from Abcam or one of our authorized distributors