


Product datasheet

Anti-USP13 antibody ab99423

画像数 3

製品の概要

製品名	Anti-USP13 antibody
製品の詳細	Rabbit polyclonal to USP13
由来種	Rabbit
アプリケーション	適用あり: WB, IP, IHC-P
種交差性	交差種: Human 交差が予測される動物種: Rabbit, Horse, Guinea pig, Dog, Pig, Chimpanzee, Ferret, Rhesus monkey, Gorilla, Orangutan, Elephant 
免疫原	Synthetic peptide, corresponding to a region within amino acids 750-800 of Human USP13 (NP_003931.2).
ポジティブ・コントロール	HeLa and 293T whole cell lysates.

製品の特性

製品の状態	Liquid
保存方法	Shipped at 4°C. Upon delivery aliquot and store at -20°C. Avoid freeze / thaw cycles.
バッファー	Preservative: 0.09% Sodium Azide Constituents: Tris citrate/phosphate buffer, pH 7-8
精製度	Immunogen affinity purified
ポリ/モノ	ポリクローナル
アイソタイプ	IgG

アプリケーション

Our [Abpromise guarantee](#) covers the use of **ab99423** in the following tested applications.

The application notes include recommended starting dilutions; optimal dilutions/concentrations should be determined by the end user.

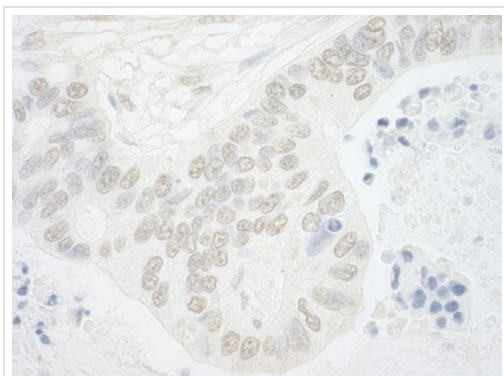
アプリケーション	Abreviews	特記事項
WB		1/2000 - 1/10000. Predicted molecular weight: 97 kDa.

アプリケーション	Abreviews	特記事項
IP		Use at 2-5 µg/mg of lysate.
IHC-P		1/1000 - 1/5000. Perform heat mediated antigen retrieval with citrate buffer pH 6 before commencing with IHC staining protocol.

## ターゲット情報

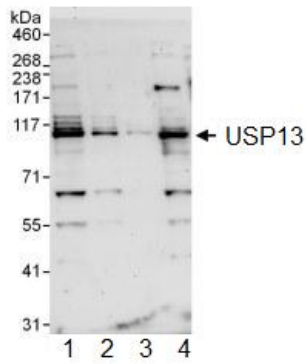
<b>組織特異性</b>	Highly expressed in ovary and testes.
<b>配列類似性</b>	Belongs to the peptidase C19 family. Contains 2 UBA domains. Contains 1 UBP-type zinc finger.

## 画像



Immunohistochemistry (Formalin/PFA-fixed paraffin-embedded sections) analysis of human ovarian carcinoma tissue labelling USP13 with ab99423 at 1/5000 (0.2µg/ml).  
Detection: DAB.

Immunohistochemistry (Formalin/PFA-fixed paraffin-embedded sections) - Anti-USP13 antibody (ab99423)



Western blot - USP13 antibody (ab99423)

**All lanes** : Anti-USP13 antibody (ab99423) at 0.1 µg/ml

**Lane 1** : HeLa whole cell lysate at 50 µg

**Lane 2** : HeLa whole cell lysate at 15 µg

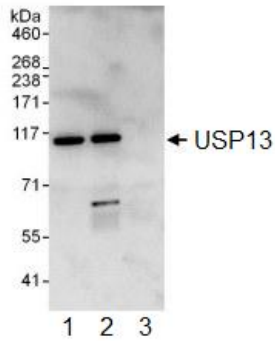
**Lane 3** : HeLa whole cell lysate at 5 µg

**Lane 4** : 293T whole cell lysate at 50 µg

Developed using the ECL technique.

**Predicted band size:** 97 kDa

**Exposure time:** 30 seconds



Immunoprecipitation - USP13 antibody (ab99423)

ab99423 at 1 µg/ml detecting USP13 in HeLa whole cell lysate by western blot analysis following immunoprecipitation. Detection utilised ECL with a 10 second exposure.

For immunoprecipitation, ab99423 was used at at 3 µg/mg lysate; 1 mg of lysate was used for IP and 20% of IP was loaded.

Lane 1; IP using [ab99421](#), a rabbit anti-USP13 antibody which recognizes an upstream epitope.

Lane 2; IP using ab99423.

Lane 3; IP using control IgG.

**Please note:** All products are "FOR RESEARCH USE ONLY AND ARE NOT INTENDED FOR DIAGNOSTIC OR THERAPEUTIC USE"

### Our Abpromise to you: Quality guaranteed and expert technical support

- Replacement or refund for products not performing as stated on the datasheet
- Valid for 12 months from date of delivery
- Response to your inquiry within 24 hours
- We provide support in Chinese, English, French, German, Japanese and Spanish
- Extensive multi-media technical resources to help you
- We investigate all quality concerns to ensure our products perform to the highest standards

If the product does not perform as described on this datasheet, we will offer a refund or replacement. For full details of the Abpromise, please visit <http://www.abcam.co.jp/abpromise> or contact our technical team.

### Terms and conditions

- Guarantee only valid for products bought direct from Abcam or one of our authorized distributors