

Product datasheet

Anti-Importin 7 antibody ab99272

画像数 3

製品の概要

製品名	Anti-Importin 7 antibody
製品の詳細	Rabbit polyclonal to Importin 7
アプリケーション	適用あり: WB, IP, IHC-P
種交差性	交差種: Human 交差が予測される動物種: Rabbit, Horse, Guinea pig, Cow, Dog, Chimpanzee, Rhesus monkey, Gorilla, Elephant ▲
免疫原	A region within amino acids 50-100 of Human Importin 7 (NP_006382.1).
ポジティブ・コントロール	HeLa whole cell lysate. 293T cell lysate.

製品の特性

製品の状態	Liquid
保存方法	Shipped at 4°C. Upon delivery aliquot and store at -20°C. Avoid freeze / thaw cycles.
バッファー	Preservative: 0.09% Sodium Azide Constituents: 0.1% BSA, Tris buffered saline
精製度	Immunogen affinity purified
ポリ/モノ	ポリクローナル
アイソタイプ	IgG

アプリケーション

Our [Abpromise guarantee](#) covers the use of **ab99272** in the following tested applications.

The application notes include recommended starting dilutions; optimal dilutions/concentrations should be determined by the end user.

アプリケーション	Abreviews	特記事項
WB		1/2000 - 1/10000. Predicted molecular weight: 120 kDa.
IP		Use at 5-15 µg/mg of lysate.

アプリケーション	Abreviews	特記事項
IHC-P		1/200 - 1/1000. Perform heat mediated antigen retrieval with citrate buffer pH 6 before commencing with IHC staining protocol.

ターゲット情報

機能

Functions in nuclear protein import, either by acting as autonomous nuclear transport receptor or as an adapter-like protein in association with the importin-beta subunit KPNB1. Acting autonomously, is thought to serve itself as receptor for nuclear localization signals (NLS) and to promote translocation of import substrates through the nuclear pore complex (NPC) by an energy requiring, Ran-dependent mechanism. At the nucleoplasmic side of the NPC, Ran binds to importin, the importin/substrate complex dissociates and importin is re-exported from the nucleus to the cytoplasm where GTP hydrolysis releases Ran. The directionality of nuclear import is thought to be conferred by an asymmetric distribution of the GTP- and GDP-bound forms of Ran between the cytoplasm and nucleus. Mediates autonomously the nuclear import of ribosomal proteins RPL23A, RPS7 and RPL5. Binds to a beta-like import receptor binding (BIB) domain of RPL23A. In association with KPNB1 mediates the nuclear import of H1 histone and the Ran-binding site of IPO7 is not required but synergizes with that of KPNB1 in importin/substrate complex dissociation. In vitro, mediates nuclear import of H2A, H2B, H3 and H4 histones. In vitro, mediates the nuclear import of HIV-1 reverse transcription complex (RTC) integrase. In case of HIV-1 infection, binds and mediates the nuclear import of HIV-1 Rev.

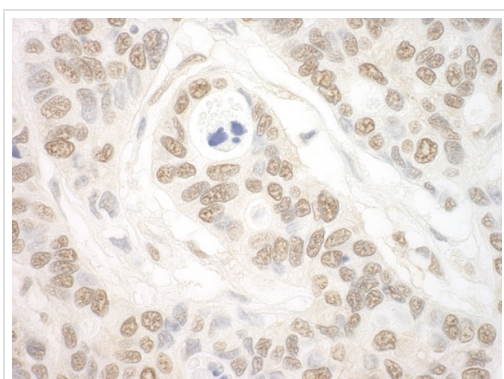
配列類似性

Belongs to the importin beta family.
Contains 1 importin N-terminal domain.

細胞内局在

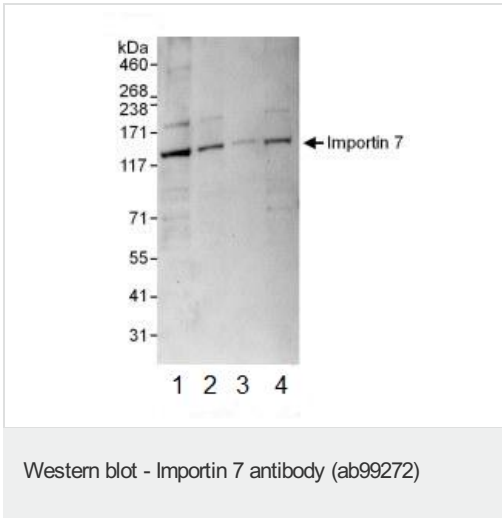
Cytoplasm. Nucleus.

画像



Immunohistochemistry (Formalin/PFA-fixed paraffin-embedded sections) analysis of human ovarian carcinoma tissue labelling Importin 7 with ab99272 at 1/1000 (0.2µg/mg).
Detection: DAB.

Immunohistochemistry (Formalin/PFA-fixed paraffin-embedded sections) - Anti-Importin 7 antibody (ab99272)



All lanes : Anti-Importin 7 antibody (ab99272)
at 0.04 µg/ml

Lane 1 : HeLa whole cell lysate at 50 µg

Lane 2 : HeLa whole cell lysate at 15 µg

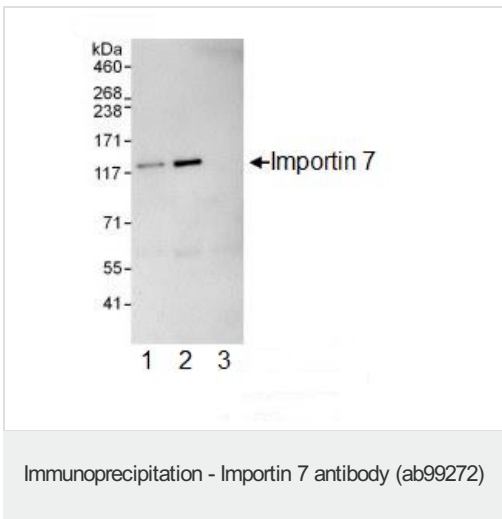
Lane 3 : HeLa whole cell lysate at 5 µg

Lane 4 : 293T whole cell lysate at 50 µg

Developed using the ECL technique

Predicted band size : 120 kDa

Exposure time : 30 seconds



ab99272 at 0.4 µg/ml detecting Importin 7 in HeLa whole cell lysate by western blot analysis following immunoprecipitation. Detection utilised ECL with a 30 second exposure.

For immunoprecipitation, ab99272 was used at at 10 µg/mg lysate; 1 mg of lysate was used for IP and 20% of IP was loaded.

Lane 1; IP using ab99272

Lane 2; IP using a rabbit anti-Importin 7 antibody which recognizes a downstream epitope.

Lane 3; IP using control IgG.

Please note: All products are "FOR RESEARCH USE ONLY AND ARE NOT INTENDED FOR DIAGNOSTIC OR THERAPEUTIC USE"

Our Abpromise to you: Quality guaranteed and expert technical support

- Replacement or refund for products not performing as stated on the datasheet
- Valid for 12 months from date of delivery
- Response to your inquiry within 24 hours
- We provide support in Chinese, English, French, German, Japanese and Spanish
- Extensive multi-media technical resources to help you
- We investigate all quality concerns to ensure our products perform to the highest standards

If the product does not perform as described on this datasheet, we will offer a refund or replacement. For full details of the Abpromise, please visit <http://www.abcam.co.jp/abpromise> or contact our technical team.

Terms and conditions

- Guarantee only valid for products bought direct from Abcam or one of our authorized distributors