


Product datasheet

Anti-CAMK1D antibody ab97802

画像数 2

製品の概要

製品名	Anti-CAMK1D antibody
製品の詳細	Rabbit polyclonal to CAMK1D
由来種	Rabbit
アプリケーション	適用あり: WB, ICC/IF
種交差性	交差種: Human 交差が予測される動物種: Mouse, Rat, Zebrafish 
免疫原	Recombinant fragment, corresponding to a sequence within amino acids 81-356 of Human CAMK1D (NP_705718).
ポジティブ・コントロール	293T, HepG2 or HeLa cell lines.

法規制情報

医薬用外毒物

製品の特性

製品の状態	Liquid
保存方法	Shipped at 4°C. Upon delivery aliquot and store at -20°C or -80°C. Avoid repeated freeze / thaw cycles.
バッファー	Preservative: 0.01% Thimerosal (merthiolate) Constituents: 10% Glycerol, 0.1M Tris, 0.1M Glycine, pH 7.0
精製度	Immunogen affinity purified
ポリ/モノ	ポリクローナル
アイソタイプ	IgG

アプリケーション

Our [Abpromise guarantee](#) covers the use of **ab97802** in the following tested applications.

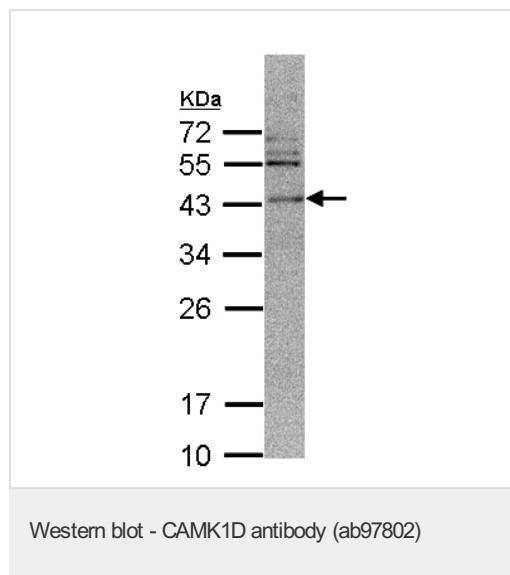
The application notes include recommended starting dilutions; optimal dilutions/concentrations should be determined by the end user.

アプリケーション	Abreviews	特記事項
WB		1/500 - 1/3000. Predicted molecular weight: 43 kDa.
ICC/IF		1/100 - 1/200.

ターゲット情報

機能	Calcium/calmodulin-dependent protein kinase belonging to a proposed calcium-triggered signaling cascade. May regulate calcium-mediated granulocyte function. May play a role in apoptosis of erythroleukemia cells. Activates MAP kinase MAPK3 (By similarity). In vitro, phosphorylates transcription factor CREM isoform Beta and probably CREB1.
組織特異性	Broadly expressed. Highly and mostly expressed in polymorphonuclear leukocytes (neutrophilic and eosinophilic granulocytes) while little or no expression is observed in monocytes and lymphocytes.
配列類似性	Belongs to the protein kinase superfamily. CAMK Ser/Thr protein kinase family. CaMK subfamily. Contains 1 protein kinase domain.
ドメイン	The autoinhibitory domain overlaps with the calmodulin binding region and interacts in the inactive folded state with the catalytic domain as a pseudosubstrate.
細胞内局在	Cytoplasm. Nucleus. Predominantly cytoplasmic (Probable). Also nuclear upon activation.

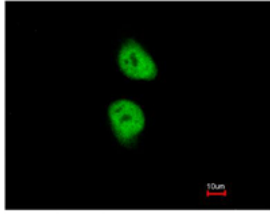
画像



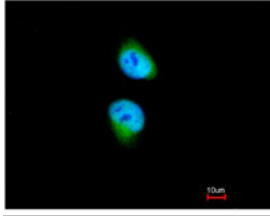
Anti-CAMK1D antibody (ab97802) at 1/500 dilution + 293T whole cell lysate at 30 µg

Predicted band size: 43 kDa

12% SDS-PAGE.



Top: ab97802 at 1/200 dilution staining CAMK1D in PFA-fixed HeLa cells by immunofluorescence.
Bottom: image merged with DNA probe.



Immunocytochemistry/ Immunofluorescence -
CAMK1D antibody (ab97802)

Please note: All products are "FOR RESEARCH USE ONLY AND ARE NOT INTENDED FOR DIAGNOSTIC OR THERAPEUTIC USE"

Our Abpromise to you: Quality guaranteed and expert technical support

- Replacement or refund for products not performing as stated on the datasheet
- Valid for 12 months from date of delivery
- Response to your inquiry within 24 hours
- We provide support in Chinese, English, French, German, Japanese and Spanish
- Extensive multi-media technical resources to help you
- We investigate all quality concerns to ensure our products perform to the highest standards

If the product does not perform as described on this datasheet, we will offer a refund or replacement. For full details of the Abpromise, please visit <http://www.abcam.co.jp/abpromise> or contact our technical team.

Terms and conditions

- Guarantee only valid for products bought direct from Abcam or one of our authorized distributors