

Product datasheet

Anti-TCR alpha + TCR beta antibody [H57-597] (PE/Cy5®)
ab95762

画像数 1

製品の概要

製品名	Anti-TCR alpha + TCR beta antibody [H57-597] (PE/Cy5®)
製品の詳細	Armenian Hamster monoclonal [H57-597] to TCR alpha + TCR beta (PE/Cy5®)
由来種	Armenian hamster
標識	PE/Cy5®. Ex: 496nm, Em: 670nm
特異性	Common epitope of the beta chain of the mouse alpha/beta T cell receptor (TCR) complex. This antibody does not crossreact with TCR gamma/delta type.
アプリケーション	適用あり: Flow Cyt
種交差性	交差種: Mouse
免疫原	Affinity purified TCR from Mouse DO-11.10 cells.
ポジティブ・コントロール	C57Bl/6 splenocytes; mouse thymocyte and splenocyte suspensions

製品の特性

製品の状態	Liquid
保存方法	Shipped at 4°C. Store at +4°C.
バッファー	Preservative: 0.09% Sodium Azide Constituents: PBS, 150mM Sodium chloride, pH 7.2
精製度	Protein G purified
ポリ/モノ	モノクローナル
クローン名	H57-597
アイソタイプ	IgG

アプリケーション

Our [Abpromise guarantee](#) covers the use of **ab95762** in the following tested applications.

The application notes include recommended starting dilutions; optimal dilutions/concentrations should be determined by the end user.

アプリケーション	Abreviews	特記事項
Flow Cyt		<p>Use 0.125-0.25µg for 10⁵ cells.</p> <p>Cell number should be determined empirically but can range from 10⁵ to 10⁸ cells/test (based on a test volume of 100 µl).</p> <p>ab157805 - Armenian Hamster polyclonal IgG, is suitable for use as an isotype control with this antibody.</p>

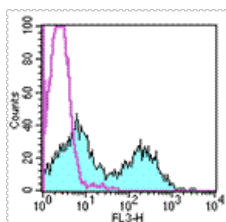
ターゲット情報

関連性

The receptors on T cells consist of immunoglobulin like integral membrane glycoproteins containing 2 polypeptide subunits, alpha and beta, of similar molecular weight, 40 to 55 kD in the human. Like the immunoglobulins of the B cells, each T cell receptor subunit has, external to the cell membrane, an N terminal variable domain and a C terminal constant domain. T cell receptors recognise foreign antigens which have been processed as small peptides and bound to major histocompatibility complex molecules at the surface of antigen presenting cells. Each T cell receptor is a dimer consisting of one alpha and one beta chain or one delta and one gamma chain. In a single cell, the T cell receptor loci are rearranged and expressed in the order delta, gamma, beta, and alpha. If both delta and gamma rearrangements produce functional chains, the cell expresses delta and gamma. If not, the cell proceeds to rearrange the beta and alpha loci.

細胞内局在 Type I membrane protein.

画像



Flow cytometry staining of C57Bl/6 splenocytes with staining buffer (autofluorescence) (open histogram) or 0.125 µg of ab95762 (filled histogram). Total cells were used for analysis.

Flow Cytometry - TCR beta antibody [H57-597]
(PE/Cy5®) (ab95762)

Please note: All products are "FOR RESEARCH USE ONLY AND ARE NOT INTENDED FOR DIAGNOSTIC OR THERAPEUTIC USE"

Our Abpromise to you: Quality guaranteed and expert technical support

- Replacement or refund for products not performing as stated on the datasheet
- Valid for 12 months from date of delivery
- Response to your inquiry within 24 hours
- We provide support in Chinese, English, French, German, Japanese and Spanish
- Extensive multi-media technical resources to help you

- We investigate all quality concerns to ensure our products perform to the highest standards

If the product does not perform as described on this datasheet, we will offer a refund or replacement. For full details of the Abpromise, please visit <http://www.abcam.co.jp/abpromise> or contact our technical team.

Terms and conditions

- Guarantee only valid for products bought direct from Abcam or one of our authorized distributors